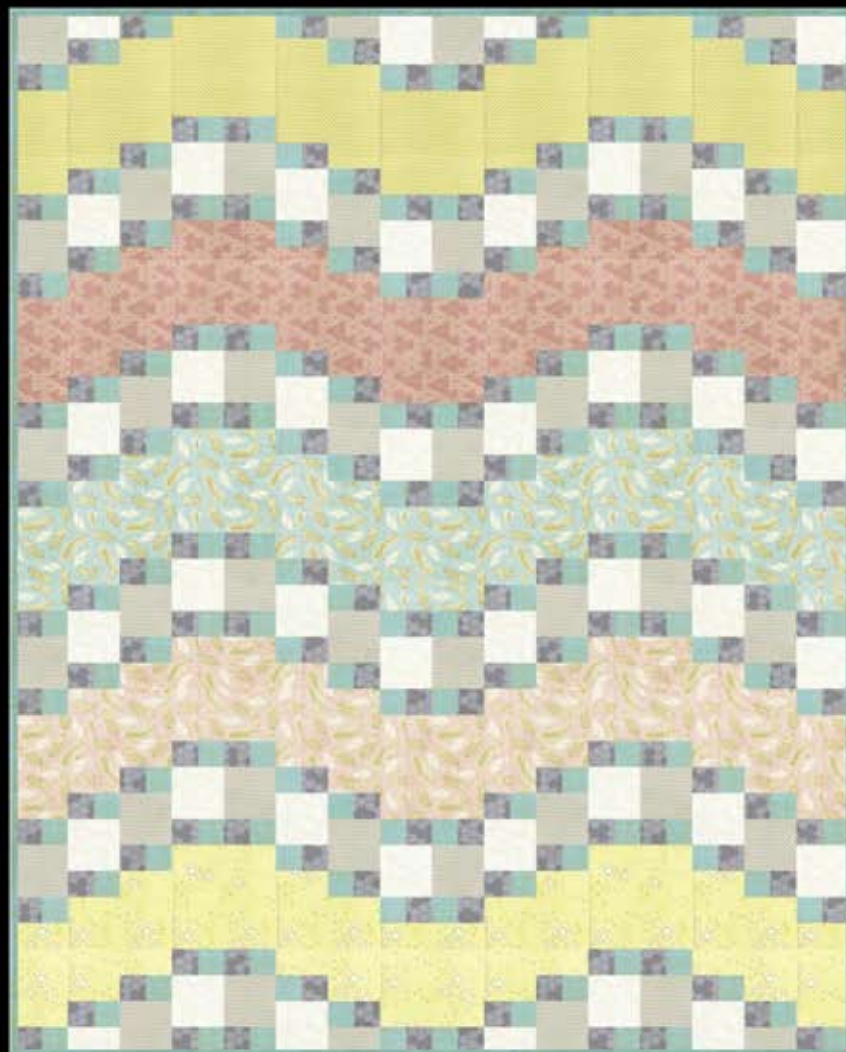


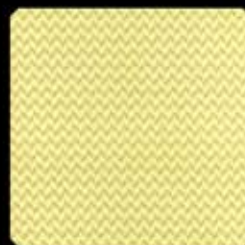
## Clarabelle

Quilt design by Sharon McConnel of Color Girl Quilts featuring fabrics from the "Clarabelle" collection by Hoffman California Fabrics.



Finished size 48" x 60"

Free pattern available  
at [www.hoffmanfabrics.com](http://www.hoffmanfabrics.com)



N7515  
413G-Watercress Gold



N7511  
413G-Watercress Gold



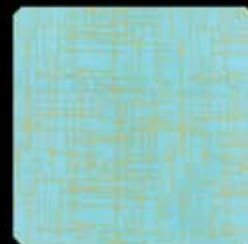
N7512  
219G-Carnation Gold



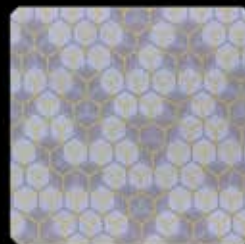
N7513  
219G-Carnation Gold



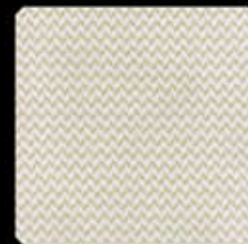
N7512  
74G-Mint Gold



N7514  
194G-Robin's Egg Gold



N7513  
48G-Gray Gold



N7515  
183G-Glacier Gold



G8555  
3G-White Gold



# Quilt Yardage Chart

Gold Colorway	Silver Colorway	
N7515-413G-Watercress Gold	N7514-588S-March Silver	1/3 yard
N7511-413G-Watercress Gold	N7513-164S-Antique Silver	1/3 yard
N7512-219G-Carnation Gold	N7513-245S-Victoria Silver	1/3 yard
N7513-219G-Carnation Gold	N7511-198S-Apricot Silver	1/3 yard
N7512-74G-Mint Gold	N7512-521S-Mist Silver	1/3 yard
N7514-194G-Robin's Egg Gold*	N7414-207S-Seabreeze Silver*	1 yard
N7513-48G-Gray Gold	N7514-76S-Pewter Silver	1/2 yard
N7515-183G-Glacier Gold	N7515-176S-Ice Silver	1/2 yard
G8555-3G-White Gold	G8555-3S-White Silver	1/2 yard

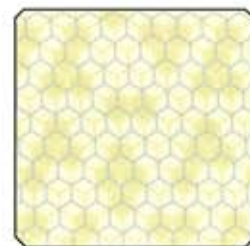
\*Yardage includes binding.

BACKING: "Clarabelle" coordinate of your choice. 3 1/3 yards

## Silver Colorway



N7514  
588S-March Silver



N7513  
164S-Antique Silver



N7513  
245S-Victoria Silver



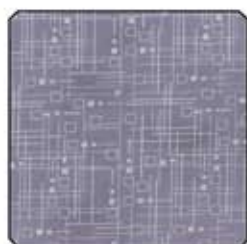
N7511  
198S-Apricot Silver



N7512  
521S-Mist Silver



N7514  
207S-Seabreeze Silver



N7514  
76S-Pewter Silver



N7515  
176S-Ice Silver

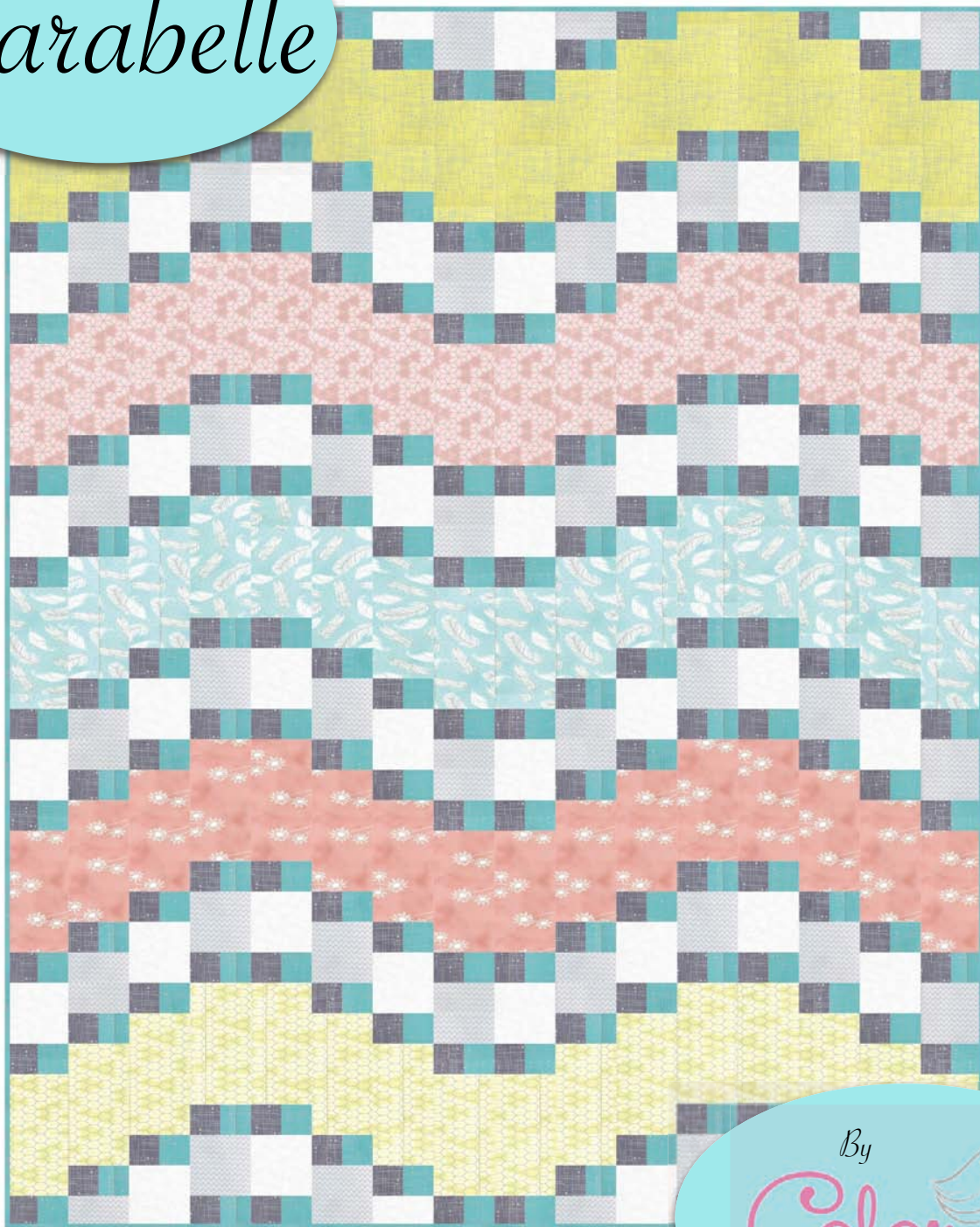


G8555  
3S-White Silver

View swatches and download quilt patterns at [hoffmanfabrics.com](http://hoffmanfabrics.com)



# Clarabelle



Clarabelle Quilt  
 Design and pattern by Sharon McConnell  
[colorgirlquilts.com](http://colorgirlquilts.com)

skill level: basic piecing  
 Quilt size: 48" x 60"  
 20 blocks, set 4 x 5

Fabrics: "Clarabelle" collection by Hoffman Fabrics

Fabric requirements  
 Based on standard 42-44" width of fabric (wof)

	quantity	Gold Color Way/sku	Silver Color Way/sku
<b>2 yellow prints (each)</b>	1/3 yard	N7515-413G N7511-413G	N7514-488S N7513-164S
<b>2 pink prints (each)</b>	1/3 yard	N7512-219G N7513-219G	N7513-245S N7511-198S
<b>1 light blue print</b>	1/3 yard	N7512-74G	N7512-521S
<b>dark aqua</b>	1/2 yard	N7514-194G	N7414-207S
<b>dark gray</b>	1/2 yard	N7513-48G	N7514-76S
<b>light gray</b>	1/2 yard	N7515-183G	N7515-176S
<b>white</b>	1/2 yard	G8555-3G	G8555-3S
<b>backing</b>	3 1/3 yards	Choice of prints	Choice of Prints
<b>binding</b>	1/2 yard	N7514-194G	N7514-207S
<b>batting</b>	56" x 68"		

### Cutting

read all instructions and sew a test block prior to cutting all the fabrics

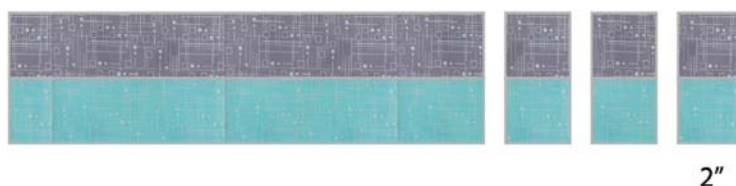
	First Cut,	Then Cut, (or total amount needed)
<b>Yellow Prints (cut the following from two fabrics)</b>	3 strips, 3 1/2" x wof	(16) 3 1/2" x 6 1/2" rectangles
<b>Pink Prints (cut the following from two fabrics)</b>	3 strips, 3 1/2" x wof	(16) 3 1/2" x 6 1/2" rectangles
<b>light blue print</b>	3 strips, 3 1/2" x wof	(16) 3 1/2" x 6 1/2" rectangles

	First Cut,	Then Cut, (or total amount needed)
<b>dark aqua</b>	8 strips, 2" x wof	do not sub-cut
<b>dark gray</b>	8 strips, 2" x wof	do not sub-cut
<b>light gray</b>	4 strips, 3 1/2" x wof	(20) 3 1/2" x 2" rectangles (30) 3 1/2" squares
<b>white</b>	4 strips, 3 1/2" x wof	(20) 3 1/2" x 2" rectangles (30) 3 1/2" squares

### Sewing

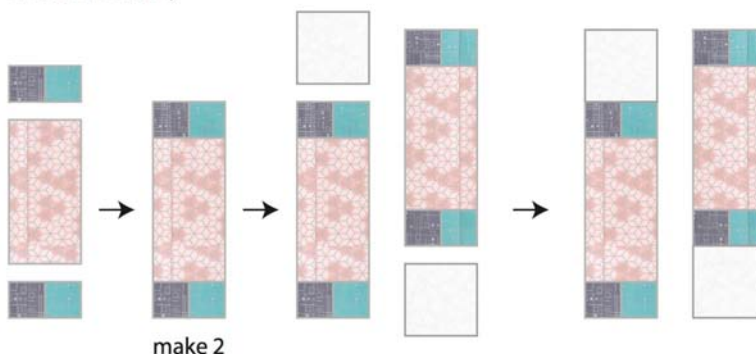
Sew with right sides of fabric facing, using a 1/4" seam. Press after each seam.

1. Pair each dark aqua strip with a dark gray strip. Sew them together along the length. Press toward the gray. Make 8 strip sets in this way.
2. Cut each gray/aqua strip set into 2" sections. Make (160) 2" x 3 1/2" units.

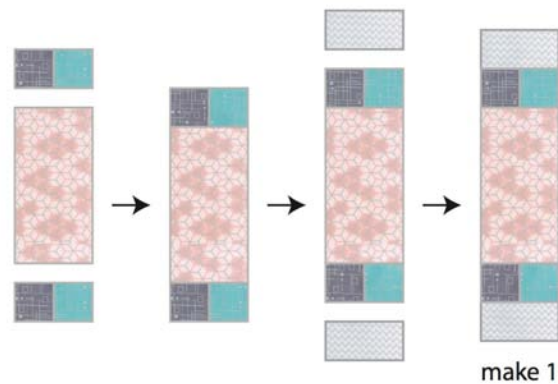


3. Make the A blocks: Each A block requires eight gray/aqua squares units made in step 2, plus two white 3 1/2" squares, one gray 3 1/2" square, two gray 3 1/2" x 2" rectangles, and four of the same print (pink, yellow, or blue) 3 1/2" x 6 1/2" rectangles. Divide fabrics accordingly. Begin sewing with one set of the pink print rectangles.

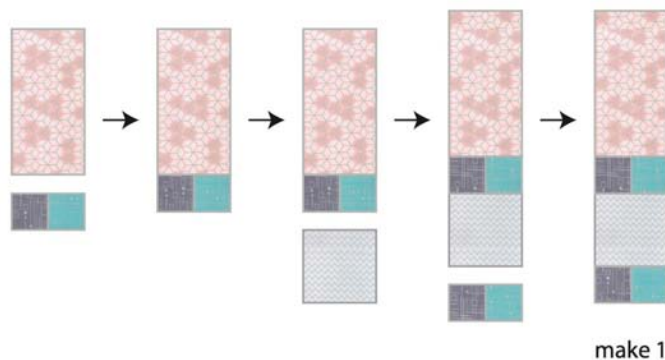
Block A assembly



4. Sew one aqua/gray squares unit to both short ends of two of the pink rectangles. Orient the squares so that the gray is on the left and aqua on the right as shown above. Press toward the pink rectangle.
5. Sew a white  $3\frac{1}{2}$ " square to the top of one of the units made in step 4, and sew a white  $3\frac{1}{2}$ " square to the bottom of the second. Press toward the white square. See graphic on page 3.
6. Sew aqua/gray squares units to each end of a third pink  $3\frac{1}{2}$ " x  $6\frac{1}{2}$ " rectangle. Orient the gray to the left and the aqua to the right as shown below. Press toward the pink rectangle.
7. Sew the gray  $3\frac{1}{2}$ " x 2" rectangles to each end of the unit made in step 6, as shown below. Press toward the gray rectangles.



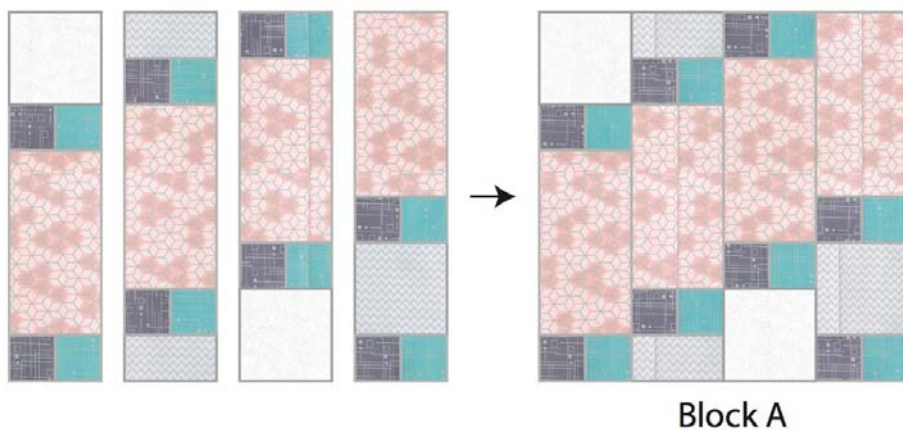
8. Sew an aqua/gray squares unit to the bottom end of the fourth pink rectangle. Press toward the pink rectangle



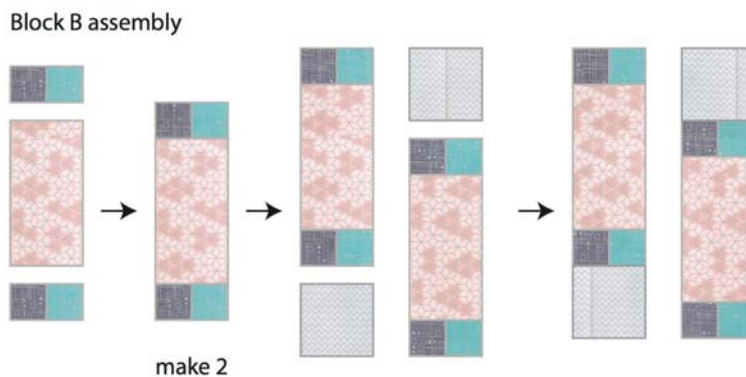
9. Sew the gray  $3\frac{1}{2}$ " square to the other side of the aqua/gray unit as shown above. Press toward the gray square.



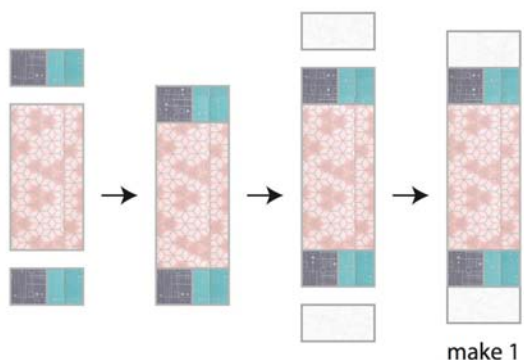
10. Sew the last aqua/gray squares unit to the other side of the gray square. Press toward the gray square.
11. Arrange the block A units sewn made in steps 4-10 as shown below.



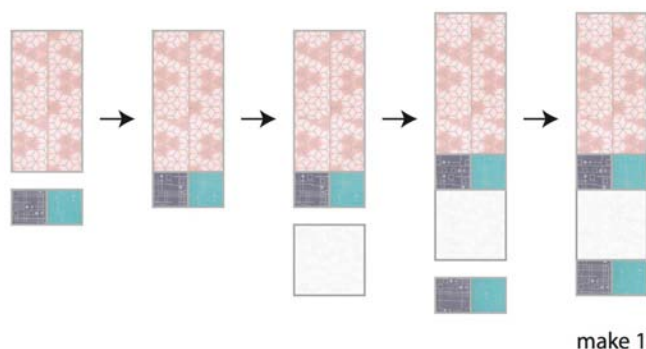
12. Sew the units together to complete block A. Press all seams open.
13. Make two A blocks with each print fabric (two pink prints, two yellow prints, one blue print), or a total of 10 A blocks, keeping the gray/aqua squares units, white and gray fabrics in the same position for all blocks.
14. Make the B blocks: Each B block requires eight aqua/gray squares units, plus four of the same print  $3\frac{1}{2}'' \times 6\frac{1}{2}''$  rectangles, two gray  $3\frac{1}{2}''$  squares, one white  $3\frac{1}{2}''$  square, and two white  $3\frac{1}{2}'' \times 2''$  rectangles. Divide fabrics accordingly. Begin sewing with a pink print.



15. Sew aqua/gray squares units to both short ends of two pink  $3\frac{1}{2}$ " x  $6\frac{1}{2}$ " rectangles. Press toward the pink.
16. Sew a gray  $3\frac{1}{2}$ " square to the top of one of the units made in step 15 and one gray  $3\frac{1}{2}$ " square to the bottom of the second. (See graphic on page 5) Press toward the gray square.
17. Sew aqua/gray squares units to both ends of a third pink  $3\frac{1}{2}$ " x  $6\frac{1}{2}$ " rectangle. Press toward the pink.
18. Sew white  $3\frac{1}{2}$ " x 2" rectangles to both ends of the unit made in step 17, as shown below. Press toward the white.



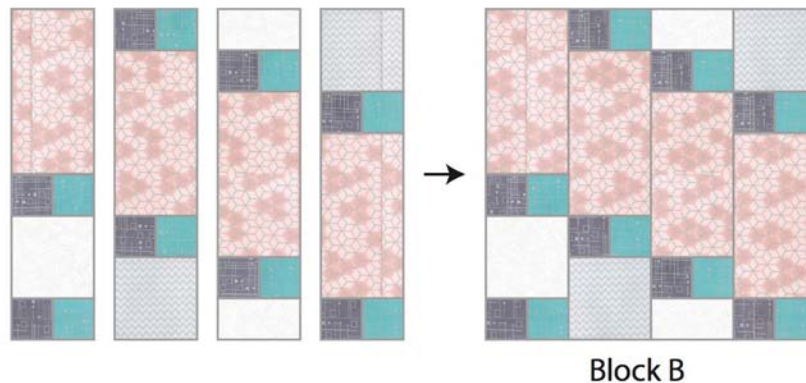
19. Sew an aqua/gray squares unit to the bottom end of the fourth pink  $3\frac{1}{2}$ " x  $6\frac{1}{2}$ " rectangle. Ensure the gray square is on the left, aqua on the right as shown below.



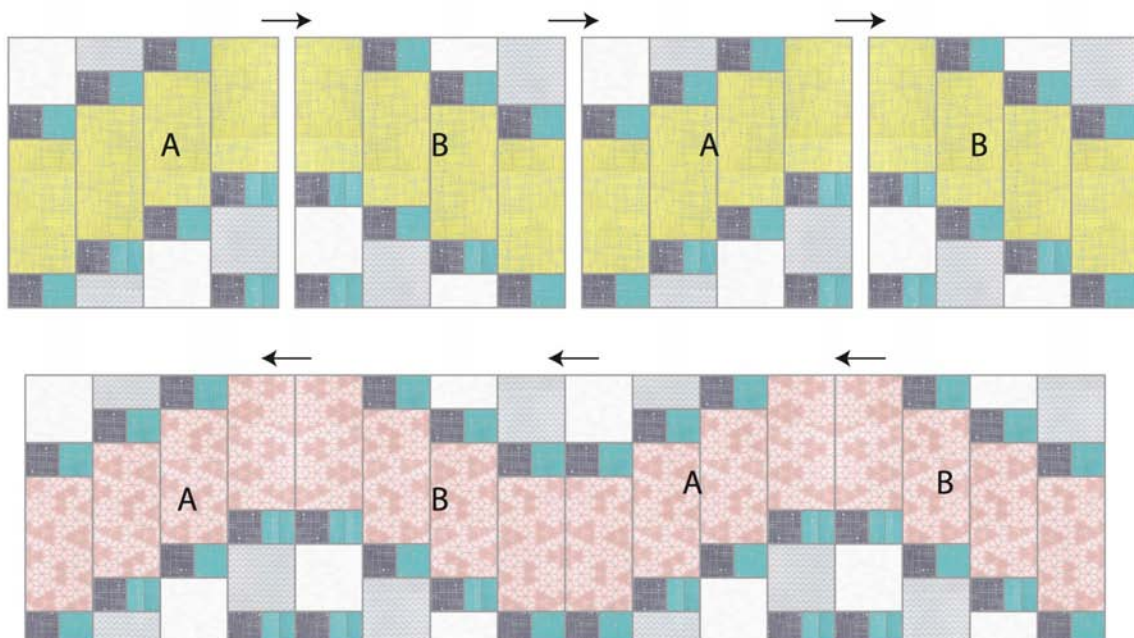
20. Sew the white  $3\frac{1}{2}$ " square to the other side of the aqua/gray unit. Press toward the white.
21. Sew the remaining aqua/gray squares unit to the other side of the white square, with gray on the left, aqua on the right. Press toward the white.



22. Arrange the block B units sewn in steps 14-21 as shown below.



23. Sew the units together to complete block B. Press all seams open.
24. Make two B blocks with each print fabric (two pink prints, two yellow prints, one blue print), or a total of 10 B blocks, keeping the aqua/gray squares units, white and gray fabrics in the same position for all blocks.
25. Each group of four blocks (two A and two B) with matching print fabric makes up one row of the quilt. The first row is yellow print. Start with an A block and alternate with B blocks as shown below. Press to the right.
26. Row two consists of blocks with pink print, set in the same order as row one, beginning with an A block and alternating with B blocks. Press to the left.



27. Continue to lay out and sew the rows in the same manner. Each odd number row is pressed to the right, even rows are pressed to the left. See complete layout diagram on page 9.
28. Sew the rows together and press the quilt top.

#### Finish the Quilt

29. Trim selvedge edges from backing fabric and press. Cut backing fabric in half to yield two pieces approximately 42" x 60".
30. Sew the pieces together on the length to yield one piece that is approximately 60" x 83 1/2". Press seam open.
31. Trim backing and batting fabric to 56" x 68".
32. Layer backing fabric face down, then batting, then quilt top, face up. Baste with pins or stitches to secure for quilting.
33. Quilting suggestion: straight parallel lines that follow the vertical seams, or parallel lines following the horizontal "wave" created by the pieced blocks. Any all-over geometric or floral meandering would also be attractive.
34. Trim selvedge edges from binding fabric. Cut strips 2 1/4" x wof on bias. Sew strips together end to end and press. Apply to quilt edge to finish using preferred method.

See full visual tutorial on binding your quilt at  
<http://colorgirlquilts.com/2013/12/binding-your-quilt.html>

Visit [colorgirlquilts.com](http://colorgirlquilts.com) for more patterns, tutorials and quilting blog by Sharon McConnell



### Clarabelle Quilt Layout Diagram

Arrange five rows of four blocks. Each row consists of two A blocks and two B blocks made with the same print fabric (pink, yellow, or blue).

Quilt design and pattern by Sharon McConnell, fabrics by Hoffman Fabrics. This pattern is for download, for individual use, and not for resale, copy or distribution for any reason or in any form.