



HOFFMAN FABRICS  
EST.1924



... if you love to quilt or love a quilter.

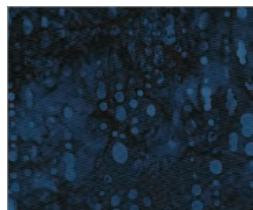
# CRYSTAL TENDRILS

FINISHED QUILT: 72" x 72"

JEWEL COLORWAY



P4346 230-Sapphire



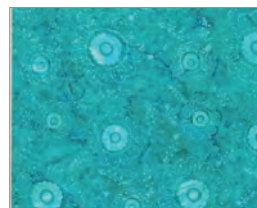
P2003 440-Liquorice



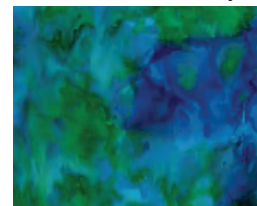
P2013 600-St. Paddy



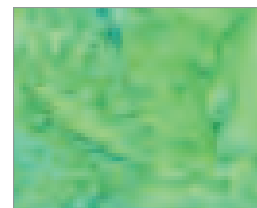
P2030 254-Tahiti



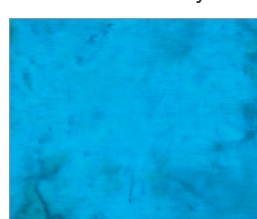
P2031 602-Earth Day



839 136-Peacock



1895 226-Seaholly



1895 578-Delta

Border patchwork design by Stephanie Prescott of A Quilter's Dream.  
Featuring a Crystal Topper digital panel designed by Jeanie Sumrall-Ajero.

Free pattern download available at [hoffmanfabrics.com](http://hoffmanfabrics.com)

[sales@hoffmanfabrics.com](mailto:sales@hoffmanfabrics.com)



1.800.547.0100 | [hoffmanfabrics.com](http://hoffmanfabrics.com)

# CRYSTAL TENDRILS

Quilt design by Stephanie Prescott of A Quilter's Dream  
72" x 72"

## Yardage Chart

### JEWEL COLORWAY

<b>FABRIC</b>	<b>1 KIT</b>
P2003 440-Liquorice	1 yard
P2013 600-St. Paddy	5/8 yard
P2030 254-Tahiti	1 yard
P2031 602-Earth Day	5/8 yard
839 136-Peacock	1 1/8 yard*
1895 226-Seaholly	5/8 yard
1895 578-Delta	1/2 yard
P4346 230 Sapphire	1 panel

### CHRISTMAS COLORWAY

<b>FABRIC</b>	<b>1 KIT</b>
1895 141-Pine	1 yard
1895 365-Tavarua	1 yard
1895 67-Flame	7/8 yard*
100 618-Zinc	1 2/3 yards
P4346 60-Hunter	1 panel

\* Includes binding

### CHRISTMAS COLORWAY



1895 141-Pine



1895 365-Tavarua



67-Flame



100 618-Zinc

P4346 60-Hunter

View swatches and download quilt patterns at [hoffmanfabrics.com](http://hoffmanfabrics.com)

# Tendrils Border - for quilts and panels

This easy pieced border can beautifully set off your quilt or panel.

Choose the fabric combination that best suits your project.

## Option #1

Multi Tendrils and Two Backgrounds

### Requirements:

2 border background fabrics -

1 yard each

4 tendrils fabrics -

$\frac{5}{8}$  yard each

inner border -  $\frac{1}{2}$  yard



## Option #2

One Tendril and Two Background

### Requirements:

2 border background fabrics -

1 yard each

1 tendril fabric -

$1 \frac{2}{3}$  yard

inner border -  $\frac{1}{2}$  yard



## Option #3

Multi Tendrils and Multi Background

### Requirements:

5 border background fabrics -

$\frac{1}{2}$  yard

5 tendrils fabrics -

$\frac{1}{2}$  yard

inner border -  $\frac{1}{2}$  yard



## Tendrils Border - for quilts and panels - cont.

### Option #1

#### Multi Tendrils and Two Backgrounds

#### Cutting:

From each of the (4) tendrils fabrics cut -

(2) 4 7/8 inch strips then sub cut into (15) 4 7/8 inch squares - total of 50

(2) 4 1/2 inch strips, sub cut into (10) 4 1/2 inch squares - total of 40

From each of the background fabrics cut -

(4) 4 7/8 inch strips then sub cut into (25) 4 7/8 inch squares - total of 50.

(3) 4 1/2 inch strips, sub cut into (20) 4 1/2 inch squares - total of 40.

\*\*\*Keep your fabrics separated by fabric and by square size.

You will have 2 stacks per fabric.

### Option #2

#### One Tendrils and Two Background

#### Cutting:

From the tendrils fabric cut -

(7) 4 7/8 inch strips then sub cut into (50) 4 7/8 inch squares.

(5) 4 1/2 inch strips, sub cut into (40) 4 1/2 inch squares.

From each of the background fabrics cut -

(4) 4 7/8 inch strips then sub cut into (25) 4 7/8 inch squares - total of 50.

(3) 4 1/2 inch strips, sub cut into (20) 4 1/2 inch squares - total of 40.

\*\*\*Keep your fabrics separated by fabric and by square size.

You will have 2 stacks per fabric.

### Option #3

#### Multi Tendrils and Multi Backgrounds

#### Cutting:

From each of the (5) border background fabrics and the (5) tendrils fabrics cut -

(2) 4 7/8 inch strips then sub cut into (10) 4 7/8 inch squares - total of 50

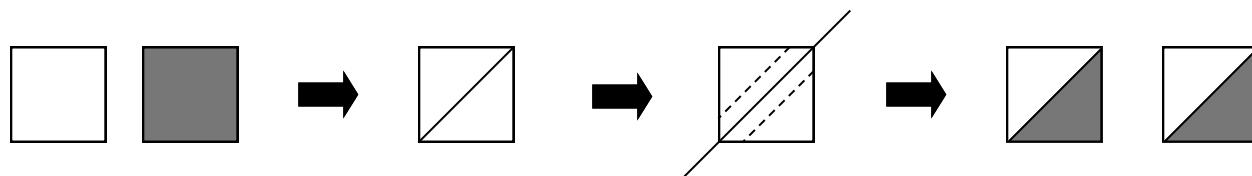
(1) 4 1/2 inch strips, sub cut into (8) 4 1/2 inch squares - total of 40.

\*\*\*Keep your fabrics separated by fabric and by square size.

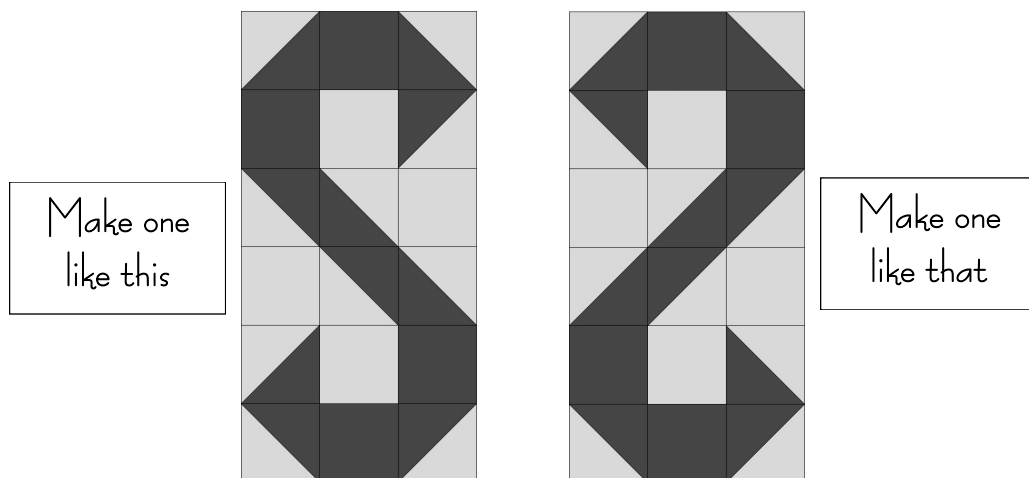
You will have 2 stacks per fabric.

### Piecing:

1.) Take (10)  $4 \frac{7}{8}$  inch squares from one of the border background fabrics and (10)  $4 \frac{7}{8}$  inch squares from one of the border tendrils fabrics. Place one square of each fabric right sides together and draw a diagonal line on the wrong side of one of the squares. Pin. Stitch a scant  $\frac{1}{4}$  inch away from both sides of the drawn line. Cut apart on the drawn line and you have 2 sewn half square triangle units! See diagram below. Repeat this process with remaining  $4 \frac{7}{8}$  units to yield a total of (20) sewn half square triangle units.

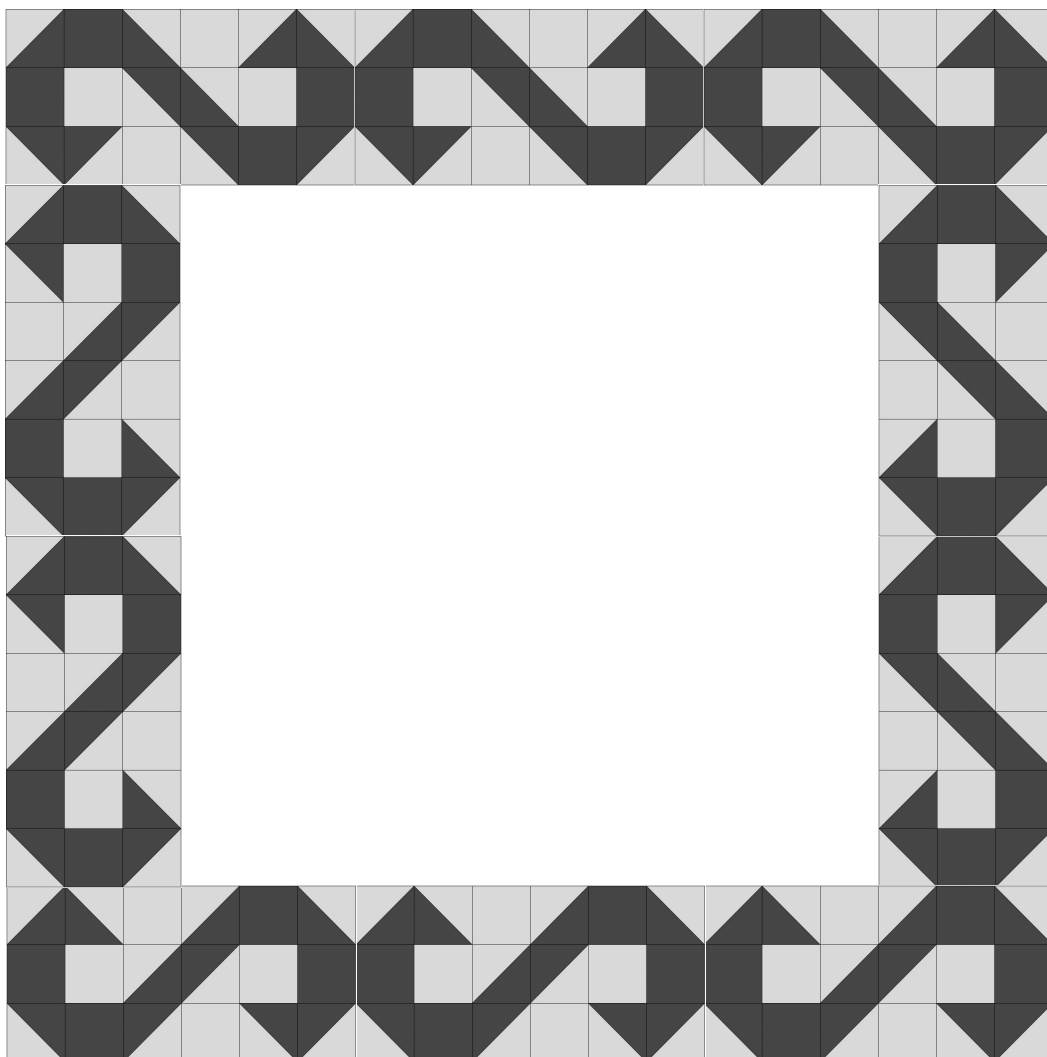


2.) Take (8)  $4 \frac{1}{2}$  squares from the same border background fabric used in step #1 and (8)  $4 \frac{1}{2}$  inch squares from the same tendrils fabric used in step #1 and the (20) sewn half square triangle units from step #1. Lay out your units as shown and sew together. Note the direction and orientation of the units before sewing. Make one of each block as shown. Each will measure  $12 \frac{1}{2} \times 24 \frac{1}{2}$



3.) Repeat steps #1 - 2 for the remaining border background and border tendrils fabrics to yield a total of (10) blocks (five of each direction) as shown above.

- 4.) Measure your quilt center or panel and trim or add border to measure  $48\frac{1}{2}$  inches square.
- 5.) Take (4) border tendrils blocks (2 going one direction and 2 going the other) and sew (2) border blocks first end to end and then to the left and right sides of the center. Be sure to look at the diagram for directional placement.
- 6.) Take the other (6) border tendrils blocks sew end to end into sets of 3 (all three going the same direction). Sew these sewn border strips onto the top and bottom of quilt.



Add some easy pizzazz to your panels or enlarge a small quilt with an interesting border that adds to your project.



Featured—  
Supernova Seasons Panel  
P4372-61 Turquoise

Featured—  
Crystal Panel  
P4346-230  
Sapphire



Featured—  
Crystal Panel P4346-60  
Hunter



Featured—  
American Byways  
Panel  
P4326-66 Autumn

