

DEW DROPS

*Quilt design by Vanessa Stevens featuring fabrics from the
"Dew Drops" collection by Hoffman California Fabrics*

Quilt Size 48" x 56"



HOFFMAN FABRICS
CALIFORNIA-INTERNATIONAL

“Dew Drops” featuring fabrics by Hoffman California Fabrics

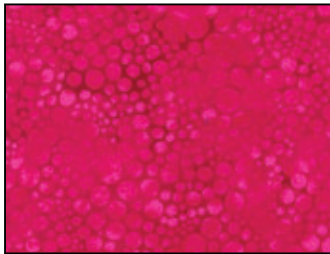
Quilt Yardage Chart

M7600 12-Pink	¾ yard
M7600 61-Turquoise	½ yard
M7600 71-Lime	½ yard
M7600 81-Violet	¾ yard
M7600 113-Frost *	1 ½ yards
M7600 124-Lemon	¾ yard
M7600 178-Leaf	¾ yard

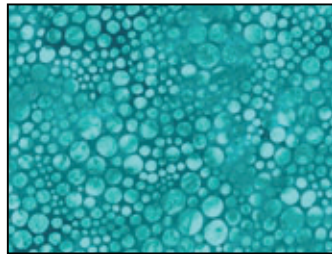
M7600 219-Carnation	¾ yard
M7600 223-Orchid	¾ yard
M7600 258-Cerulean	½ yard
M7600 482-Cotton Candy	¾ yard
M7600 529-Marigold	¾ yard
M7600 554-Treetop	¾ yard
M7600 560-Tidepool	¾ yard

*Yardage includes binding.

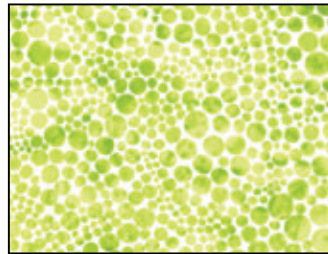
BACKING: Dew Drops coordinate of your choice. 3 yards cut crosswise



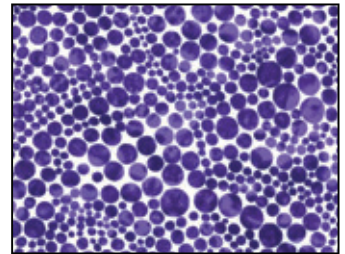
M7600 12-Pink



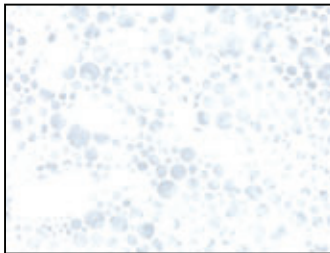
M7600 61-Turquoise



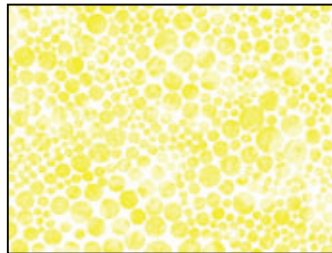
M7600 71-Lime



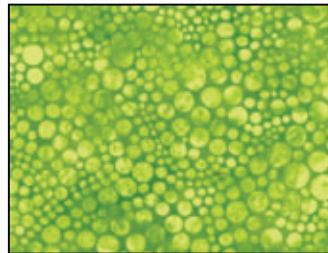
M7600 81-Violet



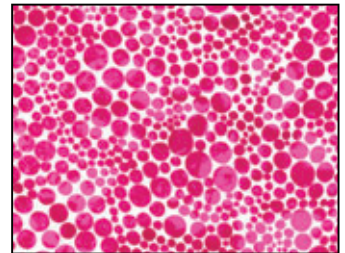
M7600 113-Frost



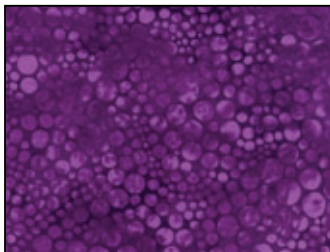
M7600 124-Lemon



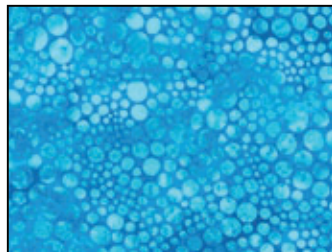
M7600 178-Leaf



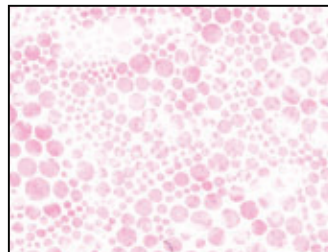
M7600 219-Carnation



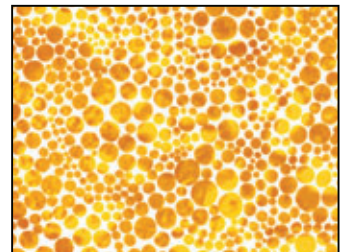
M7600 223-Orchid



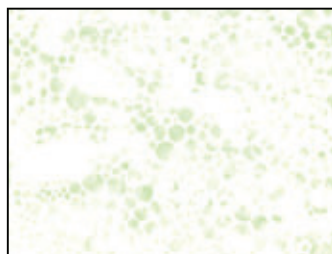
M7600 258-Cerulean



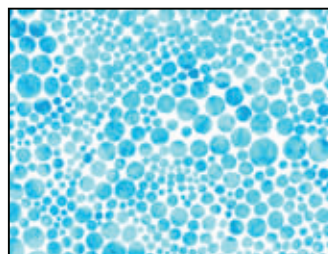
M7600 482-Cotton Candy



M7600 529-Marigold



M7600 554-Treetop



M7600 560-Tidepool

HOFFMAN FABRICS

Dew Drops

48 x 56"

Quilt Design by Vanessa Stevens

Quilt Instructions by Linda Ambrosini

Featuring fabrics from the Dew Drops collection by Hoffman CA Fabrics

Quilt Cutting Instructions:

This quilt utilizes a 60 degree cut to create an elongated diamond shape. There are only two different units to cut, a wide and a narrow elongated diamond. The following instructions describe how to cut each and the table that follows lists the number of strips and individual units to cut of each fabric. You will need 2 rulers to cut these elongated diamonds. The first is a ruler with a 60 degree marking (this could also be a 60 degree triangle ruler) and a large 12 ½ inch square ruler.

Wide Elongated Diamond

Start with a 7 inch wide by WOF strip. Lay the strip open (not folded in half) with the right side of the fabric facing up. Starting at the left hand edge create the 60 degree cut with the smaller angled point at the top left side of the fabric strip by aligning the 60 degree ruler marking along the top edge of the fabric strip. Now use the 12 ½ square ruler. Align the 8 ½ inch marking line along the angled cut just made, and cut a parallel angle to create the elongated diamond.

Narrow Elongated Diamond

Start with a 3 ¾ inch wide by WOF strip. Lay the strip open (not folded in half) with the right side of the fabric facing up. Starting at the left hand edge create the 60 degree cut with the smaller angled point at the bottom left side of the fabric strip by aligning the 60 degree ruler marking along the top edge of the fabric strip. Now use the 12 ½ square ruler. Align the 8 ½ inch marking line along the angled cut just made, and cut a parallel angle to create the elongated diamond.

Fabric Cutting Chart

Fabric	# 7" Strips	# Wide Diamonds	# 3 ¾" Strips	# Narrow Diamonds
M7600-12 Pink	1	2	1	3
M7600-61 Turquoise	1	1	2	5
M7600-71 Lime	1	1	2	5
M7600-81 Violet	1	1	1	3
M7600-133 Frost	2	4	2	7
M7600-124 Lemon	1	1	1	4
M7600-178 Leaf	1	2	1	2
M7600-210 Carnation	1	2	1	3
M7600-223 Orchid	1	2	1	3
M7600-258 Cerulean	1	1	2	5
M7600-482 Cotton Candy	1	2	1	2
M7600-526 Marigold	1	2	1	2
M7600-554 Treetop	1	1	1	4
M7600-560 Tidepool	1	1	1	2

Construction

Refer to the color photograph of the project for fabric placement.

Make 3 columns of wide diamonds. Make 3 columns of narrow diamonds.

Sew the 6 columns together lengthwise. Careful not to stretch the fabric too much. You will be sewing seams that are slightly on the bias.

Matching the seams will help maintain the ease and accuracy.

Cut the backing fabric into 2 pieces, each approximately 56" long and seam horizontally.

Layer backing, batting and pieced top, quilt as desired, trim excess fabric and bind.