

# EAST GROVE

Quilt design by Larene Smith of The Quilted Button featuring fabrics from the  
"East Grove" collection by Hoffman California Fabrics



Quilt Size 56" x 68"

Free pattern available from [www.HoffmanFabrics.com](http://www.HoffmanFabrics.com)

**HOFFMAN FABRICS**  
CALIFORNIA-INTERNATIONAL



# “East Grove” featuring fabrics from the “East Grove” collection by Hoffman California Fabrics

Quilt Yardage Chart

	Style	1 Kit	12 Kits
A	M7479 4G-Black Gold	Fat Quarter	3 yards
B	M7477 33G-Cream Gold	Fat Quarter	3 yards
C	M7478 4G-Black Gold	Fat Quarter	3 yards
D	M7477 4G-Black Gold	Fat Quarter	3 yards
E	M7478 33G-Cream Gold	Fat Quarter	3 yards
F	M7481 33G-Cream Gold	Fat Quarter	3 yards
G	M7479 6G-Brown Gold	Fat Quarter	3 yards
H	M7481 4G-Black Gold	Fat Quarter	3 yards
I	M7480 4G-Black Gold	Fat Quarter	3 yards
J	M7480 5G-Red Gold	Fat Quarter + $\frac{3}{4}$ yard	12 yards
K	G8555 78G-Scarlet Gold	$\frac{1}{2}$ yard	6 yards
L	G8555 22G-Ivory Gold	1 $\frac{3}{4}$ yard	21 yards
M	G8555 4G-Black Gold*	1 yard	12 yards

Note: These are estimated yardages. Final yardages will be on pattern.

\*Yardage includes binding.

BACKING: East Grove coordinate of your choice. 4  $\frac{1}{3}$  yards (1 kit); 52 yards (12 kits)



M7479 4G-Black Gold



M7479 6G-Brown Gold



M7480 4G-Black Gold



M7480 5G-Red Gold



M7477 4G-Black Gold



M7477 33G-Cream Gold



M7481 4G-Black Gold



G8555 4G-Black Gold



M7478 4G-Black Gold



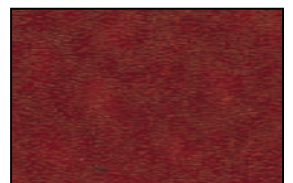
M7478 33G-Cream Gold



M7481 33G-Cream Gold



G8555 22G-Ivory Gold



G8555 78G-Scarlet Gold

View swatches and download quilt patterns at [www.hoffmanfabrics.com](http://www.hoffmanfabrics.com)

### Fabric Requirements

Fat Quarters of the Following Fabrics for the Blocks:

Fabric A (M7479-4G Black/Gold)

Fabric B (M7477-33G Cream/Gold)

Fabric C (M7478-4G Black/Gold)

Fabric D (M7477-4G Black/Gold)

Fabric E (M7478-33G Cream/Gold)

Fabric F (M7481-33G Cream/Gold)

Fabric G (M7479-6G Brown/Gold)

Fabric H (M7481-4G Black/Gold)

Fabric I (M7480-4G Black/Gold)

1 FQ +  $\frac{3}{4}$  yard Fabric J (M7480-5G Red/Gold)

$\frac{1}{2}$  Yard Fabric K (G8555-78G Scarlet/Gold)

1- $\frac{3}{4}$  Yards Fabric L (G8555-22G Ivory/Gold)

1 Yard Fabric M (G8555-4G Black/Gold) – Inner Border & Binding

4 Yards Backing

62" x 74" Batting

### General Information

- Pre-wash and starch the yardage if desired.
- All seams are sewn with a  $\frac{1}{4}$ " seam allowance.
- Read all instruction before beginning the project.
- WOF = Width of Fabric – Selvage to Selvage
- Press seams open as much as possible to decrease bulk.
- Finished Blocks are 12" x 12".
- Label all pieces when cut for easier construction.

### Instructions

#### Step 1 – Cutting the Fabric

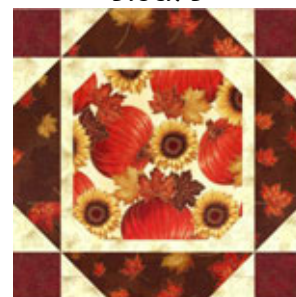
1. Cut (2) strips at  $7\frac{1}{2}$ " x 21" – Sub-cut into (4)  $7\frac{1}{2}$ " squares from each of the following Fat Quarters: Fabric A = Block A, Fabric B = Block B, Fabric C = Block C, Fabric D = Block D, and Fabric E = Block E
2. Cut (2) strips at  $8\frac{1}{2}$ " x 21" – Sub-cut into (16)  $2\frac{1}{2}$ " x  $8\frac{1}{2}$ " rectangles from each of the following Fat Quarters: Fabric F = Block A, Fabric G = Block B, Fabric H = Block C, Fabric I = Block D, and Fabric J = Block E.
3. Fabric J – Cut (7) strips at  $3\frac{1}{4}$ " x WOF – Join all the strips at the  $3\frac{1}{4}$ " edge then sub-cut into (2)  $3\frac{1}{4}$ " x  $62\frac{1}{2}$ " rectangles (Left and Right Sides) and (2)  $56$ " x  $3\frac{1}{4}$ " rectangles (Top and Bottom) – Outer Border.
4. Fabric K – Cut (5) strips at  $2\frac{1}{2}$ " x WOF – Sub-cut into (80)  $2\frac{1}{2}$ " squares – All Blocks.
5. Fabric L – Cut as follows:
  - a. Cut (15) strips at  $2\frac{1}{2}$ " x WOF – Sub-cut into (240)  $2\frac{1}{2}$ " squares – Draw a diagonal line from tip to tip on the WRONG side – All Blocks.
  - b. Cut (1) strip at  $8\frac{1}{2}$ " x WOF – Sub-cut into (40)  $1$ " x  $8\frac{1}{2}$ " rectangles – All Blocks.
  - c. Cut (1) strip at  $7\frac{1}{2}$ " x WOF – Sub-cut into (40)  $1$ " x  $7\frac{1}{2}$ " rectangles – All Blocks.
6. Fabric M – Cut (6) strips at  $1\frac{1}{2}$ " x WOF – Join all the strips at the  $1\frac{1}{2}$ " edge then sub-cut into (2)  $1\frac{1}{2}$ " x  $60\frac{1}{2}$ " rectangles (Left and Right Sides) and (2)  $50\frac{1}{2}$ " x  $1\frac{1}{2}$ " rectangles (Top and Bottom) – Inner Border.

#### **Finished Blocks**

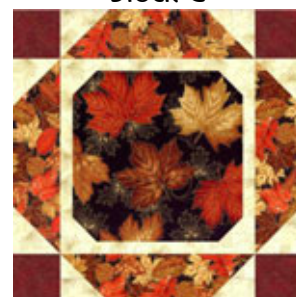
Block A



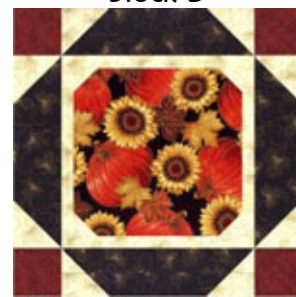
Block B



Block C



Block D



Block E





*Note: All the blocks are sewn together exactly the same way except for the fabric will change. Sew (4) of each Block.*

#### Step 2 – Block A

7. Sew (1) Fabric L 1" x 7-1/2" rectangle to the top and bottom of (1) Fabric A 7-1/2" square, then sew (1) 1" x 8-1/2" rectangle to the left and right sides to measure 8-1/2" square – Make (4).
8. Layer (1) Fabric L 2-1/2" square onto each corner of the square just completed and sew on the drawn line – trim 1/4" past the drawn line to create a snowball appearance as illustrated in Example A – Make (4) and set aside for use later – Label "Center".
9. Layer (1) Fabric L 2-1/2" square onto (1) Fabric F 8-1/2" x 2-1/2" rectangle at each 2-1/2" edge and sew on the drawn line – trim 1/4" past the drawn line as illustrated in Example B and Example C – Make (16) – Label "Set A".
10. Sew (1) of Set A to the left and right sides of (1) "Center" with the LONG EDGE of Fabric F towards the inside as illustrated in Finished Block A to measure 12-1/2" x 8-1/2" – Make (4).
11. Sew (1) Fabric K 2-1/2" square to each 2-1/2" edge of one of Set A just completed to measure 12-1/2" x 2-1/2" – Make (8), then sew to the top and bottom of the Center to finish the block at 12-1/2" square as illustrated in Finished Block A – Make (4) Label "Block A" and set aside for use later.

Example A  
↙ Snowball



Example B  
Stitch Line



Example C  
↓ Wide Edge



#### Step 3 – Block B, C, D, and E

12. Block B – Repeat Instructions 7 through 11 except replace Fabric A with Fabric B and Fabric F with Fabric G. Make (4) of Block B – Label and set aside for use later. Refer to the illustration of Finished Block B as a guide.
13. Block C – Repeat Instructions 7 through 11 except replace Fabric A with Fabric C and Fabric F with Fabric H. Make (4) of Block C – Label and set aside for use later. Refer to the illustration of Finished Block C as a guide.
14. Block D – Repeat Instructions 7 through 11 except replace Fabric A with Fabric D and Fabric F with Fabric I. Make (4) of Block D – Label and set aside for use later. Refer to the illustration of Finished Block D as a guide.
15. Block E – Repeat Instructions 7 through 11 except replace Fabric A with Fabric E and Fabric F with Fabric J. Make (4) of Block E – Label and set aside for use later. Refer to the illustration of Finished Block E as a guide.

#### Step 4 – Sewing the Blocks Together

16. There are (4) blocks per row and (5) rows. Each row will measure 48-1/2" x 12-1/2". When the rows are completed, sew them together to finish the quilt center at 48-1/2" x 60-1/2".
17. Sew the rows together as follows, refer to illustration of Example D "Block Layout" as a guide:
  - a. Row 1 – Block A, Block B, Block C, Block D
  - b. Row 2 – Block D, Block E, Block B, Block C
  - c. Row 3 – Block E, Block A, Block D, Block A
  - d. Row 4 – Block C, Block E, Block A, Block B
  - e. Row 5 – Block B, Block D, Block C, Block E

### Step 5 – Adding the Borders

18. Inner Border – Sew (1) Fabric M  $1\frac{1}{2}$ " x  $60\frac{1}{2}$ " rectangle to the left and right sides, then sew (1) Fabric M  $50\frac{1}{2}$ " x  $1\frac{1}{2}$ " rectangle to the top and bottom to finish the Inner Border at  $50\frac{1}{2}$ " x  $62\frac{1}{2}$ ".
19. Outer Border – Sew (1) Fabric J  $3\frac{1}{4}$ " x  $62\frac{1}{2}$ " rectangle to the left and right sides, then sew (1) Fabric J  $56$ " x  $3\frac{1}{4}$ " rectangle to the top and bottom to finish the Outer Border and quilt top at  $56$ " x  $68$ ".

### Step 6 – Finishing the Quilt

20. Layer the backing, batting, and quilt top and quilt as desired.
21. Using the remaining Fabric M, cut (8) strips at  $2\frac{1}{2}$ " x WOF – Join all the strips together at the  $2\frac{1}{2}$ " edge then sew on the binding to finish the quilt.

Example E  
Block Layout

