



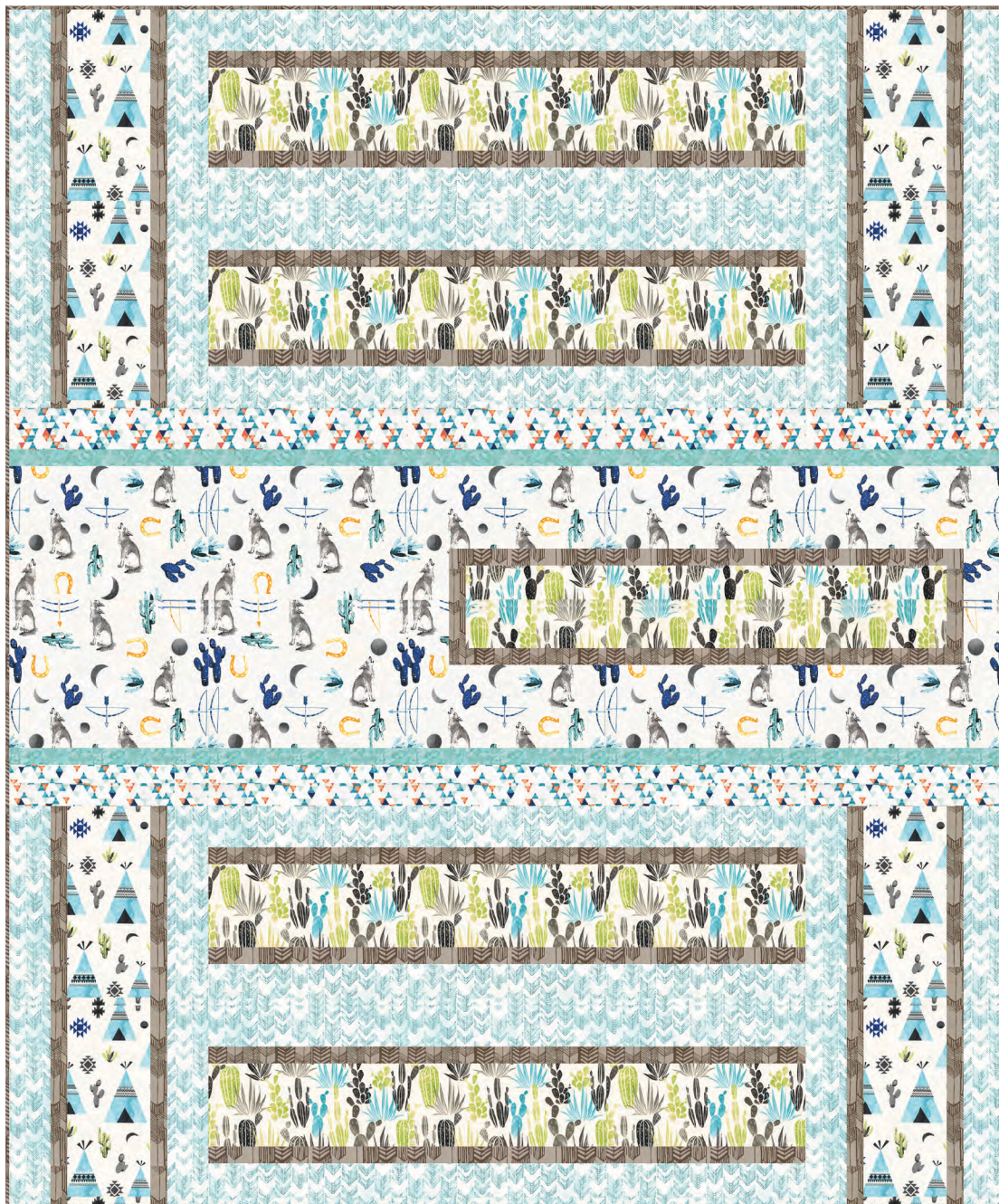
HOFFMAN FABRICS
EST.1924



FAST TRACK

BEGINNER | ONE DAY CLASS

Finished Quilt: 60" x 72"



Quilt design by Margaret Leuwen of Miss Marker's Quilts, featuring the Desert Dawn collection by Hailey Hoffman. Easy strips in a surprising layout make this quilt a real eye catcher. Big pieces ensure you will be done in a jiff!

Free pattern available at hoffmanfabrics.com



hoffmanfabrics.com

Yardage Chart

<i>FABRIC</i>	
P4338 454-Dune	3/4 yard
P4339 457-Oasis	7/8 yard
P4340 58-Earth	7/8 yard
P4341 16-Sky	1 1/2 yards
P4342 457-Oasis	3/8 yard
1895 536-Aquarius	1/4 yard
104 426-Oregano	1 3/8 yards*

*binding included



P4338 454-Dune



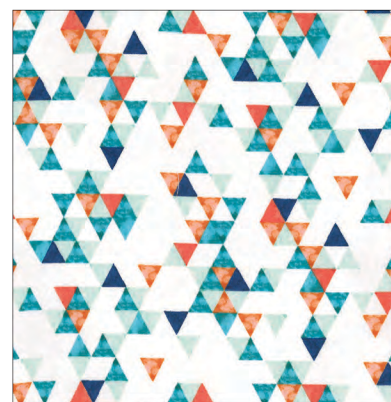
P4339 457-Oasis



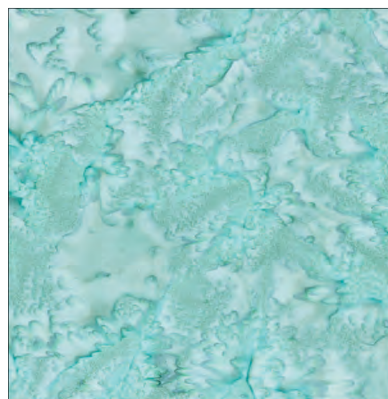
P4340 58-Earth



P4341 16-Sky



P4342 457-Oasis



1895 536-Aquarius



104 426-Oregano

Cutting

WOF = Width of Fabric

Fabric 1

Cut (2) 12 ½" WOF strips, then sub-cut (8) 12 ½ x 5 ½" rectangles.

(Block 1-Piece E)

Fabric 2

Cut (2) 9" WOF strips and sub-cut (4) 9 x 12 ½" rectangles. (Block 6-Piece M)

Cut (2) 5 ½" WOF strips and sub-cut (6) 5 ½ x 12 ½" rectangles. (Blocks 3, 4, and 5 – Piece K). From the remaining width, cut (4) 4 x 3" rectangles. (Blocks 3 & 4 – Piece L)

Fabric 3

Cut (4) 5 ½" WOF strips and sub-cut (12) 5 ½ x 12 ½" rectangles. (Block 2 – Piece F)

Cut (1) 3" WOF strip and sub-cut into (2) 3 x 12 ½" rectangles. (Block 5 – Piece H)

Cut (1) 3" WOF strip and sub-cut into (4) 3 x 9" rectangles (Blocks 3 & 4 – Piece G)

Fabric 4

Cut (2) 12 ½" WOF strips and sub-cut (16) 12 ½ x 3" rectangles. (Block 1 – Piece A)

Cut (8) 3" WOF strips and sub-cut (24) 3 x 12 ½" rectangles. (Block 2 – Piece A)

Fabric 5

Cut (4) 3" WOF strips. Sub-cut (10) 1 ½ x 12 ½" rectangles. (Blocks 3, 4, 5 and 6 – Piece I)

Fabric 6

Cut (4) 1 ½" WOF strips. Sub-cut (10) 1 ½ x 12 ½" rectangles. (Blocks 3, 4, 5 and 6 – Piece J)

Fabric 7

Cut (1) 12 ½" WOF strip. Sub-cut into (16) 12 ½ x 1 ½" rectangles. (Block 1 – Piece B)

From remaining width, cut (40) 3 x 1 ½" rectangles. Be mindful of the print direction. (Blocks 3 and 4 – Piece D)

Cut (9) 1 ½" WOF strips. Sub-cut into (26) 1 ½ x 12 ½" rectangles. (Blocks 2 & 5 – Piece B)

Cut (1) 1 ½" WOF strip and sub-cut into (40) 1 ½ x 10" rectangles. (Blocks 3 and 4 – Piece C)

Cut (7) 2 ½" WOF strips for binding.

Twin Quilt				
Fabric Color	Quantity	Cut	Piece	Blocks Used
Fabric 1-P4338 Dune	8	12 1/2" x 5 1/2"	E	1
Fabric 2-P4339 Oasis	6	12 1/2" x 5 1/2"	K	3, 4,5
Fabric 2-P4339 Oasis	4	4" x 3"	L	3, 4
Fabric 2-P4339 Oasis	4	12 1/2" x 9"	M	6
Fabric 3-P4340 Earth	12	12 1/2" x 5 1/2"	F	2
Fabric 3-P4340 Earth	4	9" x 3"	G	3, 4
Fabric 3-P4340 Earth	2	12 1/2" x 3 "	H	5
Fabric 4-P4341 16-Sky	40	12 1/2" x 3"	A	1,2
Fabric 5-P4342 Oasis	10	12 1/2" X 3"	I	3,4,5,6
Fabric 6-1895 Aquarius	10	12 1/2" x 1 1/2"	J	3,4,5,6
Fabric 7-104 Oregano	42	12 1/2" x 1 1/2"	B	1,2,5
Fabric 7-104 Oregano	4	9" x 1 1/2 "	C	3,4
Fabric 7-104 Oregano	4	3" x 1 1/2"	D	3,4

When cutting the strips/pieces for your quilt I suggest that you create 6 'stacks' of fabric, one for each of the quilt blocks you will be putting together. **Be mindful of the fabric print directions.**

Constructing Block1

- Step 1 Sew 1- 4A (12 1/2" x 3") to 1- 7B (12 1/2" x 1 1/2"). 16 units.
- Step 2 Sew 1- 1E (12 1/2" x 5 1/2") to the fabric in Step 1. Total 8 units.
- Step 3 Combine 7C fabric in Step 2 to remaining pieces in Step 1.
Finished block should measure 12 1/2" square. Total 8 blocks.

Constructing Block 2

- Step 1 Sew 1- 4A (12 1/2" x 3") to 1- 7B (12 1/2" x 1 1/2"). Make 24 units.
- Step 2 Sew 1- 3F (12 1/2" x 5 1/2") to the fabric in Step 1. Make 12 units.
- Step 3 Combine Step 2 to remaining pieces in Step 1.
Finished block should measure 12 1/2" square. Total 12 blocks.

Constructing Block 3

- Step 1 Sew 1 Fabric 5I (12 1/2" x 3") to 1 Fabric 6J (12 1/2" x 1 1/2") x 2.
- Step 2 Combine Step 1 with 1 Fabric 2K (12 1/2" x 5 1/2") Total 2 units.
- Step 3 Sew 1 Fabric 3G (9" x 3") to 1 Fabric 7D (3" x 1 1/2") Total 2 units.
- Step 4 Combine Fabric 7C (10" x 1 1/2") with Step 3 fabric.
- Step 5 Combine Step 4 with Fabric 2L (4" x 3")
- Step 6 Combine Step 5 with Step 3. Total 2 units.
Finished block should measure 12 1/2" square. Total 2 blocks.

Construction Block 4

Block 4 is constructed the same as Block 3, though fabrics are reversed.

- Step 1 Sew 1 Fabric 5I (12 1/2" x 3") to 1 Fabric 6J (12 1/2" x 1 1/2") x2.
- Step 2 Combine Step 1 with 1 Fabric 2K (12 1/2" x 5 1/2") Total 2 units.
- Step 3 Sew 1 Fabric 3G (9" x 3") to 1 Fabric 7D (3" x 1 1/2") Total 2 units.
- Step 4 Combine Fabric 7C (10" x 1 1/2") with Step 3 fabric.
- Step 5 Combine Fabric Step 4 with Fabric 2L (4" x 3").
- Step 6 Combine Step 5 with Step 3. Total 2 units.
Finished block should measure 12 1/2" square. Total 2 blocks.

Construction Block 5

- Step 1 Sew 5I (12 1/2" x 3") to 6J (12 1/2" x 1 1/2"). Total 2 units.
- Step 2 Sew Step 1 to 2K (12 1/2" x 5 1/2"). Total 2 units.
- Step 3 Sew Step 2 to 7B (12 1/2" x 1 1/2"). Total 2 units.
- Step 4 Sew Step 3 to 3H (12 1/2" x 3"). Total 2 units.
Finished block should measure 12 1/2" square. Total 2 blocks.

Construction Block 6

- Step 1 Sew 5I (12 1/2" x 3") to 6J (12 1/2" x 1 1/2") Total 4 units.
- Step 2 Sew 2M (12 1/2" x 9") to Step 1. Total 4 units.
Finished block should measure 12 1/2" square. 4 blocks total.

Row 1

Join in this order: Blocks 1,2,2,2,1

Row 2

Join in this order: Blocks 1,2,2,2,1

Row 3

Join in this order: Blocks 6,6,4,5,3

Row 4

Join in this order: Blocks 6,6,3,5,4

Row 5

Join in this order: Blocks 1,2,2,2,1

Row 6

Join in this order: Blocks 1,2,2,2,1

Combine all rows

Finished Size 60" x 72"

