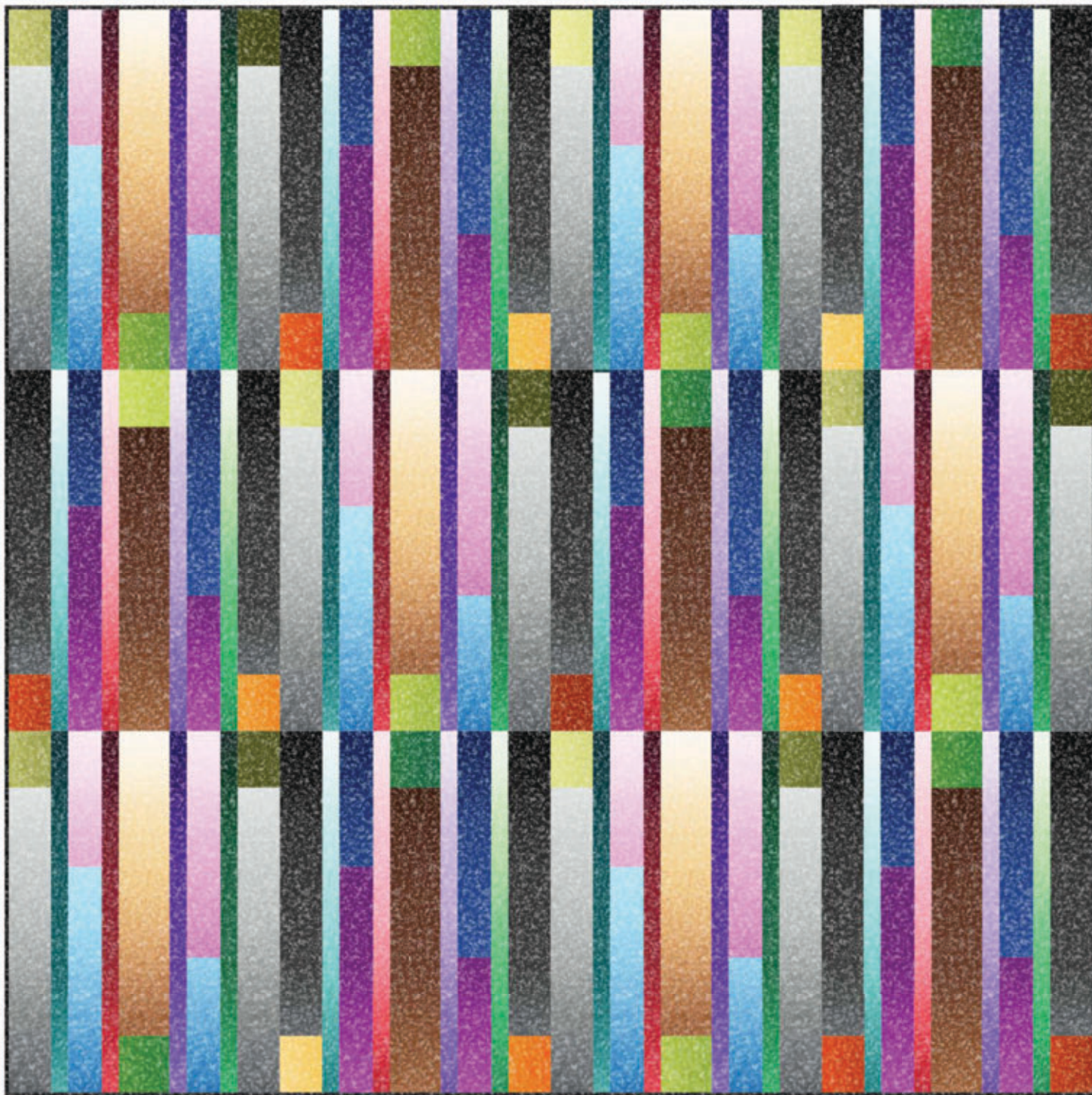


# Radiant Gradients

Collection by Hoffman California International Fabric

Finished Quilt Size: 72-1/2" x 72-1/2"

© 2014 – Copyright – All Rights Reserved Design and Instruction by Larene Smith of The Quilted Button



## Fabric Requirements

Yardage	Label	M7427 Series
1-1/4 Yards	Fabric A	6 Brown
2-1/2 Yards	Fabric B	4 Black ***
3/4 Yard	Fabric C	7 Blue
3/4 Yard	Fabric D	23 Fuchsia
3/4 Yard	Fabric E	5 Red
3/4 Yard	Fabric F	21 Teal
3/4 Yard	Fabric G	14 Purple
3/4 Yard	Fabric H	8 Green
1/4 Yard	Fabric I	115 Grass
1/4 Yard	Fabric J	96 Olive
1/4 Yard	Fabric K	310 Fire
4-1/2 Yards	Backing	
78" x 78"	Batting	
***	Binding	

## General Information

- All seams are sewn with a 1/4" seam allowance.
- WOF = Width of Fabric – Selvage to Selvage
- Press seams open as much as possible to decrease bulk.
- Finished Blocks are 18" x 24". There are (12) Blocks.
- Label all pieces when cut for easier construction.

*NOTE: There are LIGHT Blocks and DARK Blocks. This fabric allows for the pieces to be cut from opposite ends of the selvage to give the shading that is needed. One end of the selvage will be called DARK and the other end will be called LIGHT.*

## Instructions

### Step 1 – Cutting the Fabric

1. Fabric A (Brown) – Cut (12) strips at 3-1/2" x WOF – Pull (6) of the strips and working from the DARK selvage edge cut (6) 3-1/2" x 20-1/2" rectangles (Block B). From the remaining strips cut from the LIGHT selvage edge and cut (6) 3-1/2" x 20-1/2" rectangles (Block A).
2. Fabric B (Black) – Cut as follows:
  - a. Fold the fabric so that you can cut parallel to the DARK selvage edge – Cut (4) strips at 2-1/2" x approximately 90" for the Binding.
  - b. From the balance of the width, which should be about 30", cut (24) strips at 3".
  - c. Pull (12) 3" strips. Working from the DARK selvage edge cut (12) 3" x 20-1/2" rectangles (Block B). From the remaining (12) 3" strips, working from the LIGHT selvage edge, cut (12) 3" x 20-1/2" rectangles (Block A).
3. Fabric C (Blue) – Cut (10) strips at 2-1/2" x WOF – Sub-cut as follows:
  - a. Pull (4) strips and cut (12) 2-1/2" x 10-1/2" rectangles (Both Blocks).
  - b. From the remaining (6) strips cut (12) 2-1/2" x 14-1/2" rectangles alternating the cutting from the LIGHT to DARK selvages to give added shading.
4. Fabric D (Fuchsia) – Cut exactly the same as FABRIC C.

5. Fabric E (Red) – Cut (12) strips at 2" x WOF – Cut (6) 2" x 24-1/2" rectangles from the DARK selvage edge (Block B) and (6) 2" x 24-1/2" rectangles from the LIGHT selvage edge (Block A).
6. Fabric F (Teal) – Cut exactly the same as FABRIC E.
7. Fabric G (Purple) – Cut exactly the same as FABRIC E.
8. Fabric H (Green) – Cut exactly the same as FABRIC E.
9. Fabric I (Grass) – Cut (2) strips at 3-1/2" x WOF – Sub-cut into (12) 4-1/2" x 3-1/2" rectangles by opening up the strip and layer one light selvage edge on top of one dark selvage edge as this will allow for added shading (Both Blocks).
10. Fabric J (Olive) – Cut (2) strips at 3" x WOF – Sub-cut into (12) 4-1/2" x 3" rectangles using the same process as explained for FABRIC I.
11. Fabric K (Fire) – Cut exactly the same as FABRIC J.

### Step 2 – Sewing Block A – Make (6) – See Finished Block Illustration

*Note: The blocks are sewn together from LEFT to RIGHT.*

12. Sew (1) Fabric B 3" x 20-1/2" rectangle to the bottom of (1) Fabric J 3" x 4-1/2" rectangle to measure 3" x 24-1/2".
13. Sew (1) Fabric F 2" x 24-1/2" rectangle to the RIGHT side of the rectangle just sewn with Fabric J towards the top.
14. Sew (1) Fabric D 2-1/2" x 10-1/2" rectangle to the top of (1) Fabric C 2-1/2" x 14-1/2" rectangle to measure 2-1/2" x 24-1/2" then sew to the RIGHT side with Fabric D towards the top.
15. Sew (1) Fabric E 2" x 24-1/2" rectangle to the RIGHT side.
16. Sew (1) Fabric A 3-1/2" x 20-1/2" rectangle to the top of (1) Fabric I 3-1/2" x 4-1/2" rectangle to measure 3-1/2" x 24-1/2" then sew to the RIGHT side with Fabric I towards the bottom.
17. Sew (1) Fabric G 2" x 24-1/2" rectangle to the RIGHT side.
18. Sew (1) Fabric D 2-1/2" x 14-1/2" rectangle to the top of (1) Fabric C 2-1/2" x 10-1/2" rectangle to measure 2-1/2" x 24-1/2" then sew to the RIGHT side with Fabric C towards the bottom.
19. Sew (1) Fabric H 2" x 24-1/2" rectangle to the RIGHT side.
20. Sew (1) Fabric B 3" x 20-1/2" rectangle to the bottom of (1) Fabric J 3" x 4-1/2" to measure 3" x 24-1/2" then sew to the RIGHT side with Fabric J towards the top to finish Block A at 18-1/2" x 24-1/2".
21. Repeat from Instruction No. 12 FIVE more times to finish a total of (6) Blocks. Label Block A and set aside for use later.

FINISHED BLOCKS



### Step 3 – Sewing Block B – Make (6) – See Finished Block Illustration

22. Sew (1) Fabric K 3" x 4-1/2" rectangle to the bottom of (1) Fabric B 3" x 20-1/2" rectangle to measure 3" x 24-1/2".
23. Sew (1) Fabric F 2" x 24-1/2" rectangle to the RIGHT side with Fabric K towards the bottom.
24. Sew (1) Fabric D 2-1/2" x 14-1/2" rectangle to the bottom of (1) Fabric C 2-1/2" x 10-1/2" rectangle then sew to the RIGHT side with Fabric C towards the top.
25. Sew (1) Fabric E 2" x 24-1/2" rectangle to the RIGHT side.
26. Sew (1) Fabric A 3-1/2" x 20-1/2" rectangle to the bottom of (1) Fabric I 3-1/2" x 4-1/2" to measure 3-1/2" x 24-1/2" then sew to the RIGHT side with Fabric I towards the top.
27. Sew (1) Fabric G 2" x 24-1/2" rectangle to the RIGHT side.
28. Sew (1) Fabric D 2-1/2" x 10-1/2" rectangle to the bottom of (1) Fabric C 2-1/2" x 14-1/2" rectangle then sew to the RIGHT side with Fabric C towards the top.
29. Sew (1) Fabric H 2" x 24-1/2" rectangle to the RIGHT side.

30. Sew (1) Fabric K 3" x 4-1/2" rectangle to the bottom of (1) Fabric B 3" x 20-1/2" rectangle to measure 3" x 24-1/2" then sew to the RIGHT side with Fabric K towards the bottom to finish Block B at 18-1/2" x 24-1/2".
31. Repeat from Instruction No. 22 FIVE more times to finish a total of (6) Blocks. Label Block B and set aside for use later.

#### Step 4 – Sewing the Quilt Top

*Note: There are THREE rows and FOUR blocks per row alternating between Block A and Block B. Each row will measure 72-1/2" x 24-1/2". Sew the rows together at the 24-1/2" edge. See the Finished Quilt as illustrated on the cover page.*

32. Row 1 – Block A, Block B, Block A, Block B
33. Row 2 – Block B, Block A, Block B, Block A
34. Row 3 – Block A, Block B, Block A, Block B
35. Sew the rows together to finish the quilt top at 72-1/2" x 72-1/2".

#### Step 5 – Finishing the Quilt

36. Layer the backing, batting, and quilt top and quilt as desired.
37. Using Fabric B 2-1/2" strips join the strips together then sew on the binding to finish the quilt.