

FRINGE MEMENTO

Quilt design by Wendy Sheppard featuring fabrics from the "Memento" collection
by Fringe Studio for Hoffman California Fabrics

Gold Colorway



M7486 166G-Evergreen Gold



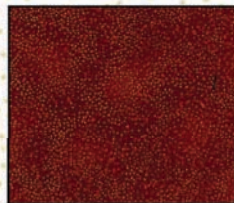
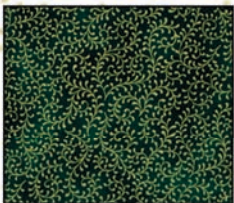
M7487 134G-Parchment Gold



M7487 166G-Evergreen Gold

Quilt Size 66" Square

Free pattern available from www.HoffmanFabrics.com



J9216 8G-Green Gold

G8555 3G-White Gold

G8555 78G-Scarlet Gold

G8555 141G-Pine Gold

M7489 166G-Evergreen Gold

M7488 119G-Vintage Gold

HOFFMAN FABRICS
CALIFORNIA-INTERNATIONAL

FRINGE

Hoffman California Fabrics is pleased to present the exceedingly beautiful artwork of Fringe Studio on premium cotton fabric for quilting and sewing. Give your creative mind freedom to flourish with *Memento* by Fringe Studio.

"Memento" featuring fabrics by Fringe Studio for Hoffman Fabrics

Quilt Yardage Chart

Fabric	Gold Colorway	Silver Colorway	
A	M7486 166G-Evergreen Gold	M7486 4S-Black Silver	$\frac{3}{8}$ yard
B	M7487 134G-Parchment Gold	M7486 3S-White Silver	$\frac{3}{8}$ yard
C	M7487 166G-Evergreen Gold	M7487 4S-Black Silver	$\frac{7}{8}$ yard
D	M7488 119G-Vintage Gold*	M7488 161S-Christmas Silver*	$\frac{1}{2}$ yard
E	M7489 166G-Evergreen Gold	M7489 4S-Black Silver	1 yard
F	G8555 3G-White Gold	G8555 3S-White Silver	2 $\frac{1}{4}$ yard
G	G8555 78G-Scarlet Gold	G8555 78S-Scarlet Silver	$\frac{1}{2}$ yard
H	G8555 141G-Pine Gold	G8555 166S-Evergreen Silver	$\frac{1}{4}$ yard
I	J9216 8G-Green Gold	J9216 4S-Black Silver	$\frac{3}{8}$ yard

*Yardage includes binding.

BACKING: Memento coordinate of your choice. 4 $\frac{1}{4}$ yards

Silver Colorway



M7486 4S-Black Silver



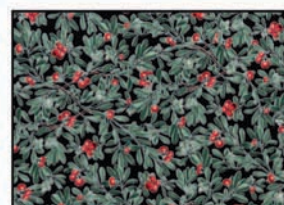
M7486 3S-White Silver



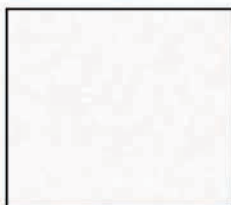
M7487 4S-Black Silver



M7488 161S-Christmas Silver



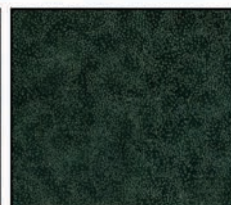
M7489 4S-Black Silver



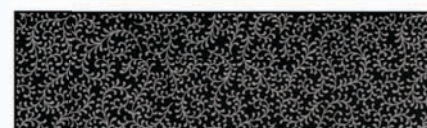
G8555 3S-White Silver



G8555 78S-Scarlet Silver



G8555 166S-Evergreen Silver



J9216 4S-Black Silver

View swatches and download quilt patterns at www.hoffmanfabrics.com

MEMENTO

Quilt design and instructions by Wendy Sheppard (copyright 2015)

Featuring fabrics from the Memento collection by Fringe Studio for Hoffman California Fabrics

Specification: Intermediate Skill Level

Approximate Finished Size: 66" x 66"

Supplies:

72" x 72" piece of backing fabric (4 yards)

72" x 72" piece of batting

Basic sewing supplies

Block Identification:

Block A



Block B



Block C



Cutting Instructions:

From **Fabric A** wreath, cut for corner blocks:

(2) 10 1/2" x 42" WOF. Sub-cut (4) 10 1/2" x 10 1/2" squares, with fussy cut wreath design centered in the square.

From **Fabric B**, cut for:

a. pieced blocks A

(4) 2 1/2" x 42" WOF. Sub-cut (36) 2 1/2" x 4 1/2" rectangles .

b. pieced blocks B

(1) 2 1/2" x 42" WOF. Sub-cut (16) 2 1/2" x 2 1/2" squares.

(1) 6 1/2" x 42" WOF. Sub-cut (4) 6 1/2" x 6 1/2" squares.

From **Fabric C**, cut for pieced blocks C:

(5) 5 1/2" x 42" WOF. Sub-cut (16) 5 1/2" x 5 1/2" squares and (8) 5 1/2" x 10 1/2" rectangles.

From **Fabric D**, cut for binding:

(7) 2 1/4" WOF strips. Piece strips to make a continuous binding strip.

From **Fabric E**, cut for:

a. pieced blocks A

(3) 2 1/2" x 42" WOF. Sub-cut (36) 2 1/2" x 2 1/2" squares.

b. outer border

(7) 3" x 42" WOF. Piece strips and sub-cut (2) 3" x 61" and (2) 3" x 66" strips.

From **Fabric F** cut for:

a. pieced blocks A&B

(4) 2 1/2" x 42" WOF. Sub-cut (52) 2 1/2" x 2 1/2" squares.

(5) 3 1/4" x 42" WOF. Sub-cut (52) 3 1/4" x 3 1/4" squares.

b. pieced blocks C

(3) 5 1/2" x 42" WOF. Sub-cut (8) 5 1/2" x 10 1/2" rectangles.

c. sashing rectangles

(2) 10 1/2" x 42" WOF. Sub-cut (40) 2" x 10 1/2" rectangles.

d. inner border #1

(6) 2" x 42" WOF. Piece strips and sub-cut (2) 2" x 56 1/2" and (2) 2" x 59 1/2" strips.

From **Fabric G**, cut for :

a. pieced blocks A&B

(2) $2\frac{1}{2}$ " x 42" WOF. Sub-cut (25) $2\frac{1}{2}$ " x $2\frac{1}{2}$ " squares.

b. sashing squares

(1) 2" x 42" WOF. Sub-cut (12) 2" x 2" squares.

c. inner border #2

(6) $1\frac{1}{4}$ " x 42" WOF. Piece strips and subcut (2) $1\frac{1}{4}$ " x $59\frac{1}{2}$ " and (2) $1\frac{1}{4}$ " x 61" strips.

From **Fabric H**, cut for

a. pieced blocks B and sashing squares

(2) $3\frac{1}{4}$ " x 42" WOF. Sub-cut (16) $3\frac{1}{4}$ " x $3\frac{1}{4}$ " and (4) 2" x 2" squares.

From **Fabric I**, cut for

a. pieced blocks A

(3) $3\frac{1}{4}$ " x 42" WOF. Sub-cut (36) $3\frac{1}{4}$ " x $3\frac{1}{4}$ " squares.

Constructing Block A:

1. QST units. Draw a diagonal line on the wrong side of (1) $3\frac{1}{4}$ " x $3\frac{1}{4}$ " Fabric I square. Place square, right sides together, on (1) $3\frac{1}{4}$ " x $3\frac{1}{4}$ " Fabric F square. Sew $\frac{1}{4}$ " away from, on right and left sides of drawn line. Cut along drawn line to yield 2 HST units.

Draw a diagonal line on the wrong side of 1 HST unit. Place unit, right sides together, on the other HST unit, with opposite colors facing each other. Sew $\frac{1}{4}$ " away from, on right and left sides of drawn line.

Cut along drawn line to yield 2 QST units.



Repeat to make a total of 8 QST units.

2. Corner units. Arrange and sew together 2 QST units, (1) $2\frac{1}{2}$ " x $2\frac{1}{2}$ " Fabric F square, and (1) $2\frac{1}{2}$ " x $2\frac{1}{2}$ " Fabric E square into a 4-patch unit.



Repeat to make a total of 4 corner units.

3. Sew 2 corner units to the opposite long sides of (1) 2 1/2" x 4 1/2" Fabric B rectangle.



Repeat to make a total of 2 rows (Row 1 & 3).

Sew (2) 2 1/2" x 4 1/2" Fabric B rectangles to the opposite sides of (1) 2 1/2" x 2 1/2" Fabric G square to make a row (Row 2).



4. Sew rows together to complete 1 block.



Repeat to make a total of 9 blocks.

Constructing Block B:

1. QST units. Draw a diagonal line on the wrong side of (1) 3 1/4" x 3 1/4" Fabric H square. Place square, right sides together, on (1) 3 1/4" x 3 1/4" Fabric F square. Sew 1/4" away from, on right and left sides of drawn line. Cut along drawn line to yield 2 HST units.

Draw a diagonal line on the wrong side of 1 HST unit. Place unit, right sides together, on the other HST unit, with opposite colors facing each other. Sew 1/4" away from, on right and left sides of drawn line.

Cut along drawn line to yield 2 QST units.



Repeat to make a total of 8 QST units.

2. Block center. Draw a diagonal line on the wrong side of (1) 2 1/2" x 2 1/2" Fabric G square. Place square, right sides together, at 1 corner of (1) 6 1/2" x 6 1/2" Fabric B square. Sew on drawn line. Trim 1/4" away from sewn line. Open and press to reveal Fabric G corner triangle.

Repeat with 3 additional 2 1/2" x 2 1/2" Fabric G squares at the remaining 3 corners of the same 6 1/2" x 6 1/2" Fabric B square to complete block center.



3. Arrange and sew together into a row 2 QST units, (2) 2 1/2" x 2 1/2" Fabric F squares, and (1) 2 1/2" x 2 1/2" Fabric B square.



Repeat to make a total of 2 rows (Row 1 & 3).

4. Arrange and sew together into a column 2 QST units and (1) 2 1/2" x 2 1/2" Fabric B square.



Repeat to make a total of 2 columns, and sew columns to the opposite sides of block center to make a row (Row 3).



5. Sew the rows together to complete 1 block.



Repeat to make a total of 4 blocks.

Constructing Block C:

1. Flying Geese unit. Draw a diagonal line on the wrong side of (1) $5\frac{1}{2}$ " x $5\frac{1}{2}$ " Fabric C square. Place square, right sides together, at a corner of (1) $5\frac{1}{2}$ " x $10\frac{1}{2}$ " Fabric F rectangle. Sew on drawn line. Trim $\frac{1}{4}$ " away from sewn line. Open and press to reveal Fabric C corner triangle. Repeat with another $5\frac{1}{2}$ " x $5\frac{1}{2}$ " Fabric C square at the opposite corner of the same $5\frac{1}{2}$ " x $10\frac{1}{2}$ " Fabric C rectangle to complete 1 Flying Geese unit.



2. Sew (1) $5\frac{1}{2}$ " x $10\frac{1}{2}$ " Fabric C rectangle on the top of the Flying Geese unit to complete 1 block.



Repeat to make a total of 8 blocks.

Constructing Quilt Top:

1. Quilt Center.

Arrange and sew together into rows 5 blocks and (4) 2" x 10 1/2" Fabric F sashing rectangles, as shown.

***Be mindful if using our wreath print, which is directional. We consider the thickest part of the wreath to be the bottom. In this case, refer to the quilt image on the next page for correct wreath and Block C placement(s).

Rows 1 & 5 ***see above



Rows 2 & 4

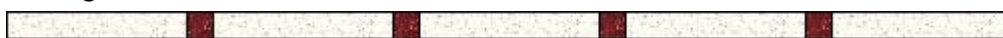


Row 3



Arrange and sew together into sashing rows (5) 2" x 10 1/2" Fabric F sashing rectangles and (4) 2" x 2" sashing squares, as shown.

Sashing Rows 1 & 4



Sashing Rows 2 & 3



Sew Pieced Rows and Sashing Rows together to complete quilt center in the following order:

Row 1 - SR 1 - Row 2 - SR 2 - Row 3 - SR 3 - Row 4 - SR 4 - Row 5



2. Inner border #1. Sew (2) 2" x 56 1/2" Fabric F strips on the opposite sides of quilt center.
Sew (2) 2" x 59 1/2" Fabric F strips on the remaining opposite sides of quilt center.

3. Inner border #2. Sew (2) 1 1/4" x 59 1/2" Fabric G strips on the opposite sides of quilt center. Sew (2)
1 1/4" x 61" Fabric G strips on the remaining opposite sides of quilt center.

4. Outer border. Sew (2) 3" x 61" Fabric E strips on the opposite sides of quilt center. Sew (2) 3" x 66" Fabric E strips on the remaining opposite sides of quilt center to complete quilt top.



Quilting Instructions:

1. With the backing fabric laying taut, place batting and then quilt top to form quilt sandwich. Baste sandwich.
2. Quilt as desired.
3. Bind to finish quilt.