



Pascali: 45" x 64"



Winter Branches (WB): 12" x 54"



BEGINNER | 1 DAY CLASS

PASCALI & WINTER BRANCHES

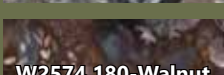
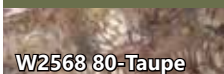
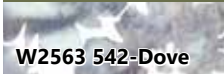
Finished Pascali Quilt: 45" x 64"
Finished Winter Branches Runner: 12" x 54"

Quilt and runner designs by Villa Rosa Designs, featuring Hoffman Bali Batiks, the Skipping Rocks collection.

Find the beauty in the Winter season with these icy and natural colors.

PASCALI

WINTER BRANCHES



| FABRICS | PASCALI 1 kit | PASCALI 28 kits | WB 1 kit | WB 17 kits |
|----------------------|------------------|--------------------|-------------|---------------|
| W2563 542-Dove | 1/2 Yard | 1 Bolt | — | — |
| W2567 410-Earl Grey | 1 FQ | 1 Bolt | 1/8 Yard | 1 Bolt |
| W2568 80-Taupe | 1 FQ | 1 Bolt | — | — |
| W2572 51-Chestnut | 1 FQ | 1 Bolt | 1/8 Yard | 1 Bolt |
| W2574 76-Pewter | 1 FQ | 1 Bolt | 1/8 Yard | 1 Bolt |
| W2574 180-Walnut | 1 FQ | 1 Bolt | — | — |
| W2574 542-Dove | 1/2 Yard | 1 Bolt | 7/8 Yard | 1 Bolt |
| W2574 704-Deep Earth | 1/2 Yard* | 1 Bolt | 1/8 Yard | 1 Bolt |
| 885 239-Persia | — | — | 1/3 Yard* | 1 Bolt |
| 1895 305-Gravel | 1 FQ | 1 Bolt | — | — |

* binding

PURCHASE PATTERNS

VillaRosaDesigns.com