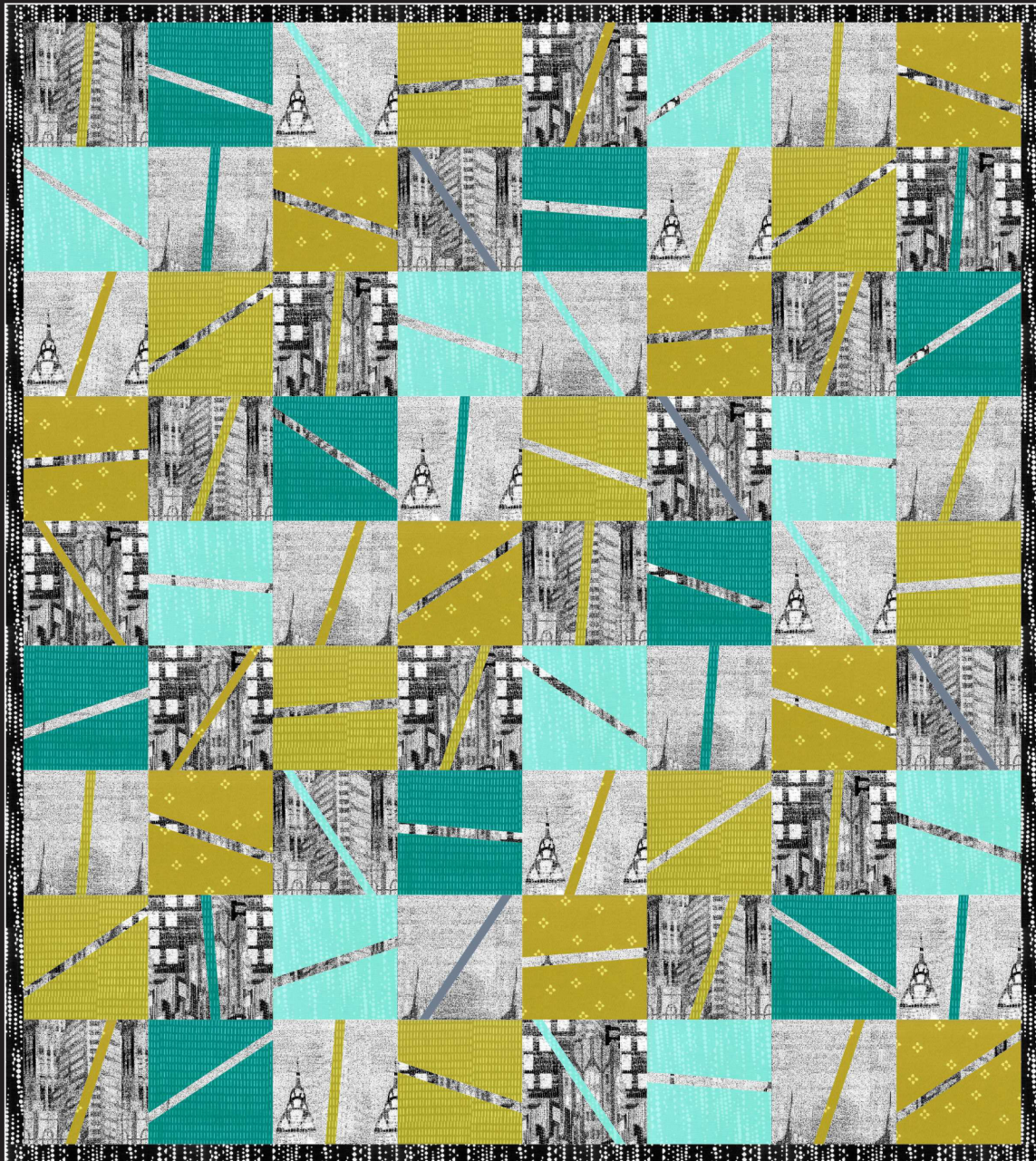


Hoffman

CALIFORNIA-INTERNATIONAL FABRICS

Piece of Sky

Quilt design by Kenna Ogg of Madison Cottage Designs
featuring fabrics from the "Skylines" collection and "Me + You" collection
by Hoffman California International Fabrics



Finished Quilt : 64" x 72"

HOFFMAN SPECTRUM
DIGITAL PRINT

Free pattern available at hoffmanfabrics.com



Made To Inspire

"Piece of Sky"

Featuring fabrics by Hoffman California Fabrics

Fabric	
N4234 - 296 - Steel	2 1/3 yard
105 - 41 - Aqua	5/8 yard
103 - 214 - Aquamarine	5/8 yard
103 - 499 - Chartreuse	5/8 yard
106 - 499 - Chartreuse	5/8 yard
Binding (105 - 163 - Zebra)	5/8 yard

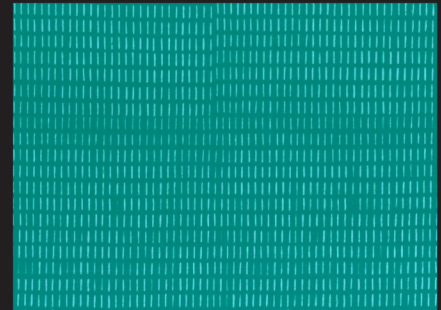
BACKING: Coordinate of your choice. 4 1/2 yards



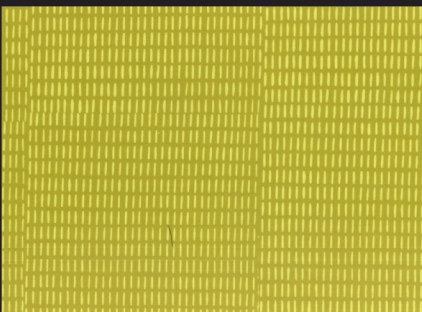
105 - 41 - Aqua



105 - 163 - Zebra



103 - 214 - Aquamarine



103 - 499 - Chartreuse



N4234 - 296 - Steel



106 - 499 - Chartreuse

View swatches and download quilt patterns at hoffmanfabrics.com

PIECE OF SKY

Quilt design by Kenna Ogg of Madison Cottage Design, featuring fabrics from "Skylines" digital print and "Me + You" batik collections by Hoffman Fabrics.

Finished quilt - 64" x 72"

Fabric Requirements

- Skyline 2 1/3 yards
- me & you (4) 5/8 yards
- backing 4 1/2 yards
- binding 5/8 yard

Cutting - **Skyline**

1. Minimally square off edge of fabric perpendicular to selvedge.
Cut (8) 8 1/2" strips perpendicular to selvedge. Cut (3) 1" strips perpendicular to selvedge.
2. From (7) 8 1/2" strips, sub cut each strip into (5) 8 1/2" squares.
From (1) 8 1/2" strip, cut (1) 8 1/2" square. From remainder of 8 1/2" strip, cut (8) 1" strips. Sub cut **all** 1" strips into 1" x 11" rectangles.

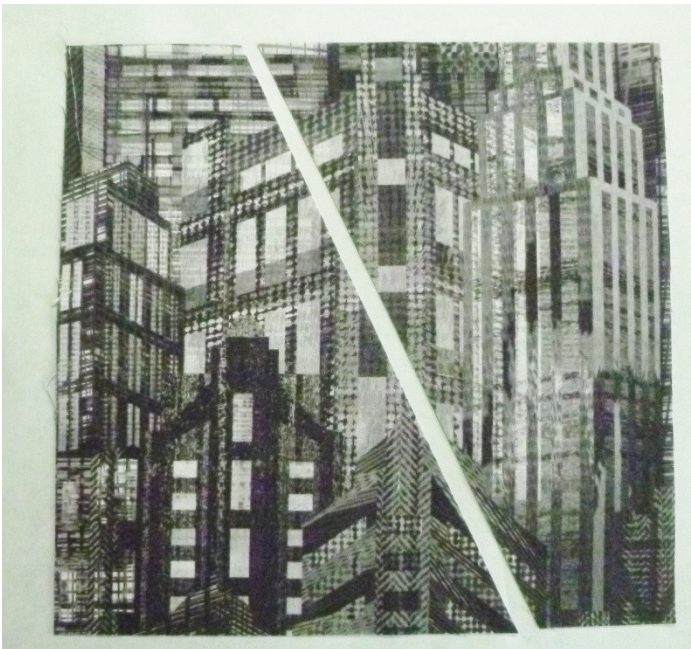
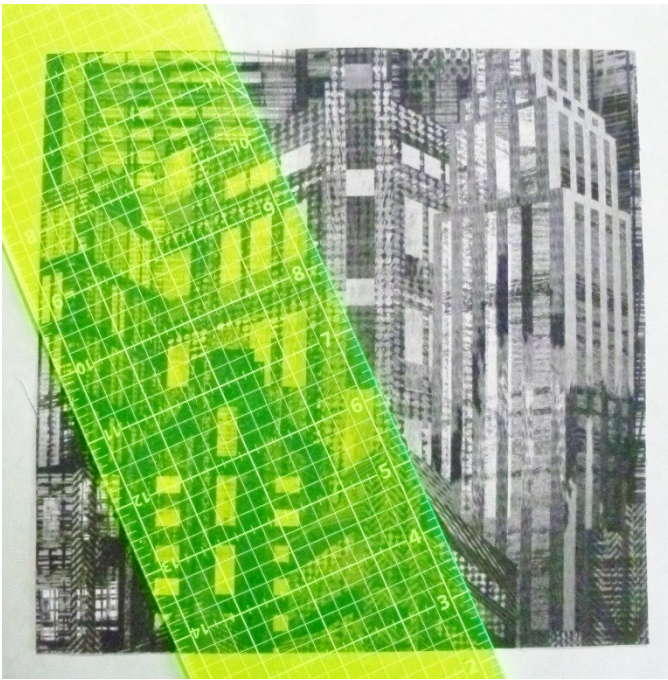
Cutting - **me & you** (4 colors)

1. Minimally square off edge of fabric perpendicular to selvedge.
Cut (2) 8 1/2" strips perpendicular to selvedge. Cut (3) 1" strips perpendicular to selvedge.
2. From (1) 8 1/2" strip, sub cut into (5) 8 1/2" squares.
From (1) 8 1/2" strip, sub cut into (4) 8 1/2" squares.
3. Sub cut **all** 1" strips into 1" x 11" rectangles.

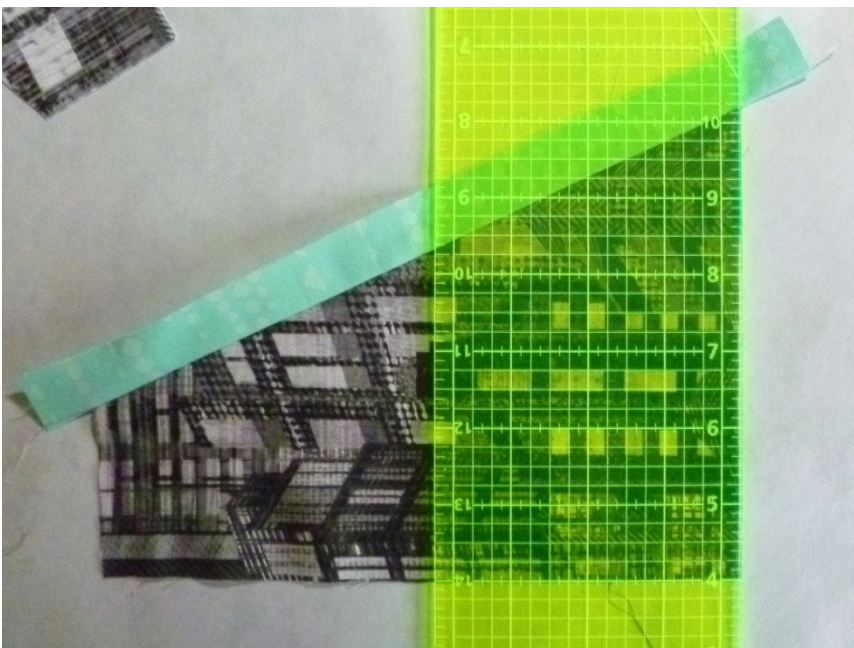
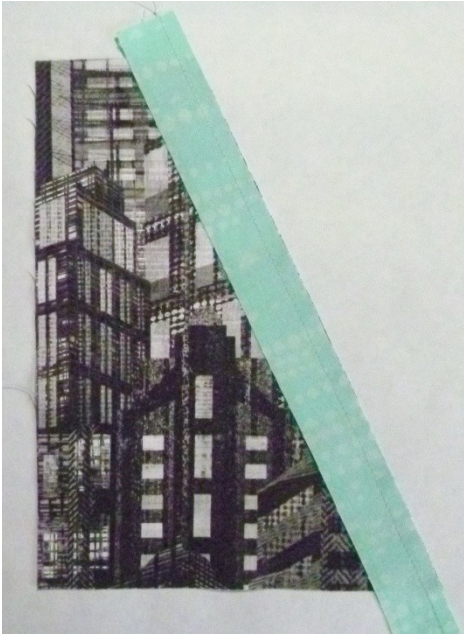
Madison Cottage Design

Piecing - All seams are sewn with 1/4" seam allowance.

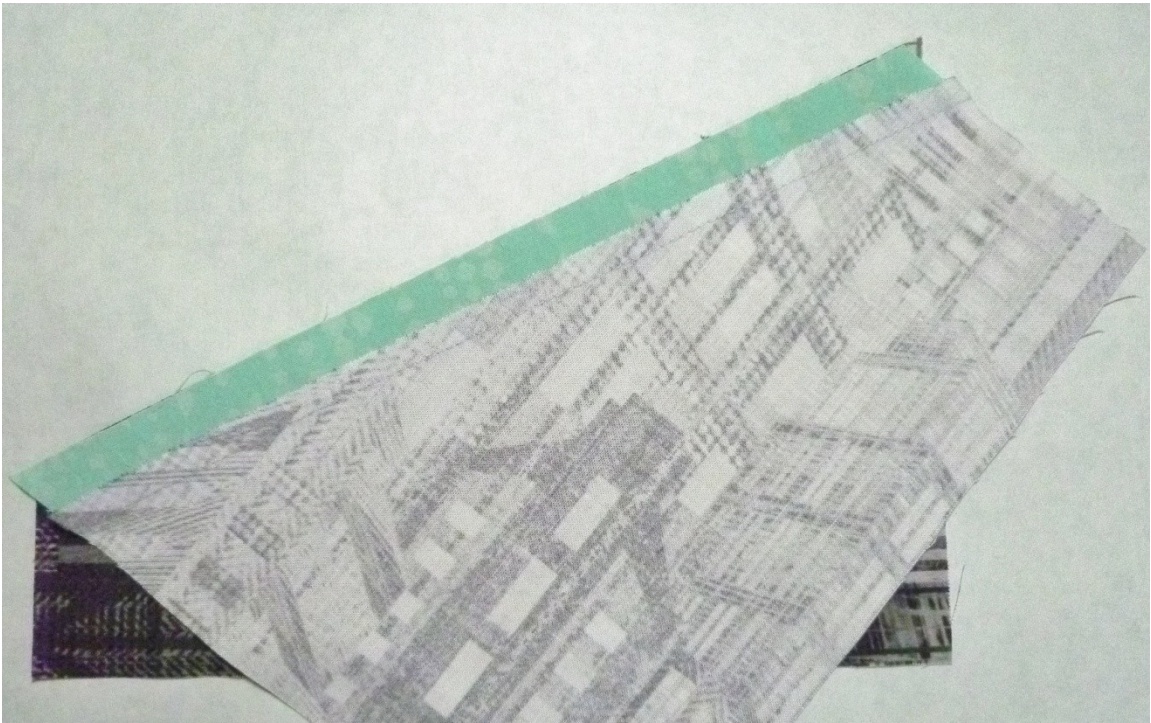
1. Take (1) 8 1/2" square. Using a straight edge, make a cut from bottom right of block to top left of block on a **slight** angle. Vary location of cut and direction on remaining squares. Cut some going bottom left to top right.



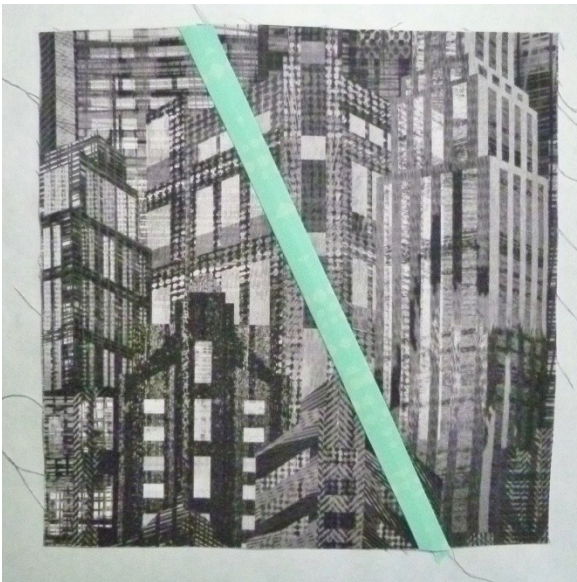
2. Sew (1) 1" x 11" unit to left side of block. Press towards strip. Trim strip even with block.



3. Sew right side of block to strip, allowing for 1/4" seam allowance.



4. Press toward seam.



Make (36) blocks **Skyline** with **me & you** strip inserts.

Make (36) blocks **me & you** with **Skyline** strip inserts.

Madison Cottage Design

Lay out blocks into rows. Sew rows together. Quilt and bind as desired.



Madison Cottage Design