

# WHEN BALI MET SOCHI

Quilt design by Linda Ambrosini featuring Assorted Hoffman Bali Batiks  
by Hoffman California Fabrics



Free pattern available from [www.HoffmanFabrics.com](http://www.HoffmanFabrics.com)

Quilt Size: 59" x 74"

View us! <http://hoffmanfabrics.com/>  
Like us! [www.facebook.com/HoffmanCaliforniaFabrics](https://www.facebook.com/HoffmanCaliforniaFabrics)  
Follow us! <https://twitter.com/#!/HoffmanFabrics>  
Pin us! <http://pinterest.com/hoffmanfabrics/>

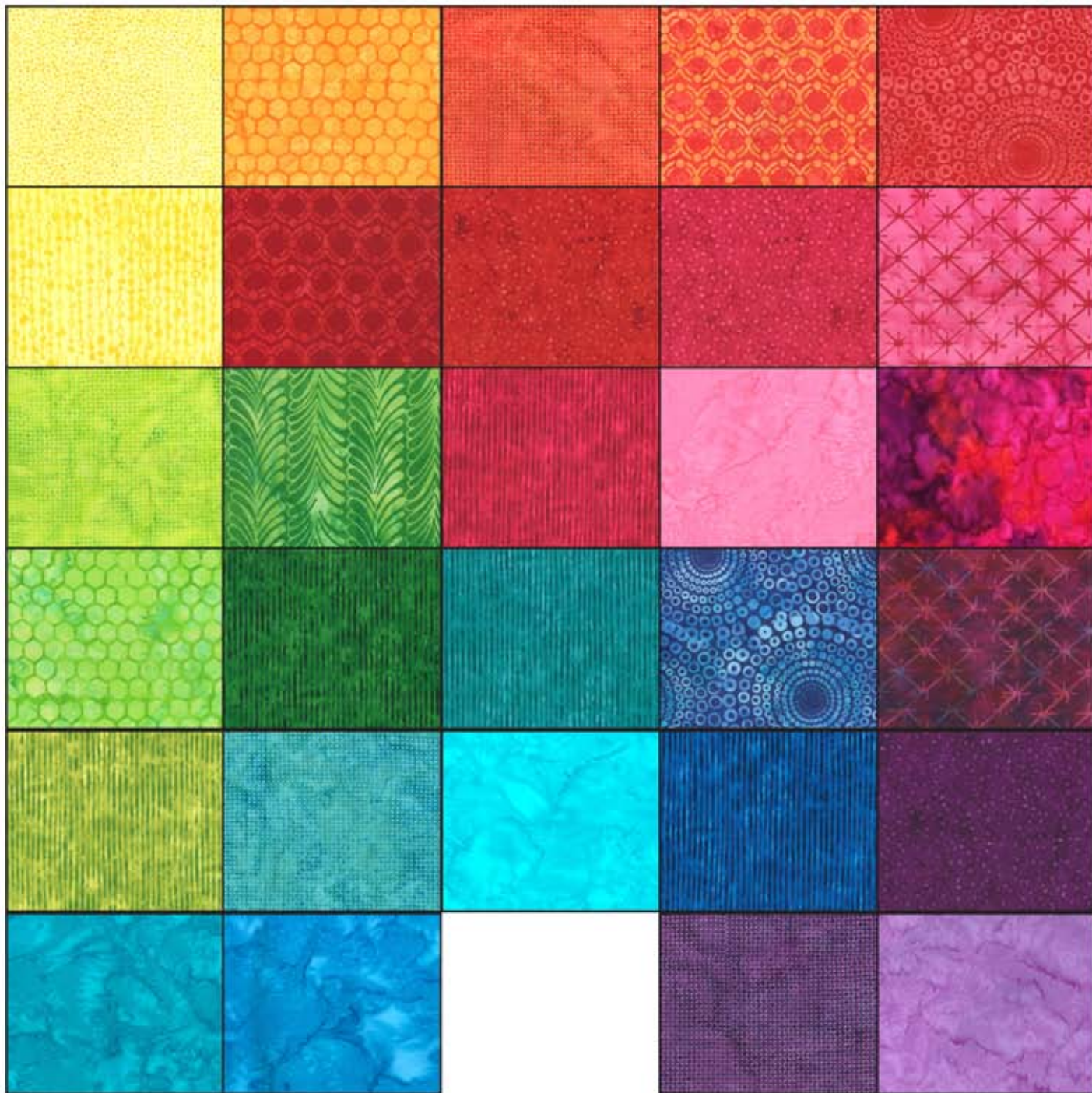
**HOFFMAN FABRICS**  
CALIFORNIA-INTERNATIONAL

# Yardage Chart

Style	
ALL STYLES	3/8 yard EACH

Binding Included.

**BACKING:** Coordinate of your choice. 4 2/3 yards



885 149-Sun	L2622 277-Koi	L2634 592-July	L2623 592-July	L2621 67-Flame
L2628 149-Sun	L2623 403-Cherry	L3380 224-Poppy	L3380 219-Carnation	L2625 348-Lucy
L2634 481-Key Lime	L2641 115-Grass	L7300 219-Carnation	1895 12-Pink	839 23-Fuchsia
L2622 321-Gecko	L7300 115-Grass	L7300 214-Aquamarine	L2621 123-Lapis	L2625 382-Grape Juice
L7300 462-Dewdrop	L2634 1-Azure	1895 136-Peacock	L7300 301-Bluebird	L3380 228-Viola
1895 443-Seasalt	1895 603-Election Day		L2634 45-Grape	1895 474-Punch

View swatches and download quilt patterns at [www.hoffmanfabrics.com](http://www.hoffmanfabrics.com)

# When Bali Met Sochi

Quilt Size 59" by 74"  
Designed by Linda Ambrosini

Featuring an assortment of Hoffman Bali Batiks  
(plus a couple of Hoffman Screenprints)

**Fabric Requirements:** 3/8 yard cuts of 29 fabrics

Intermediate quilting skills required.

Please read all instructions before beginning. **NOTE: When printing out templates, make sure your printer is set to "actual size."**

**Cutting Instructions:** Arrange your 29 fabrics into a color rainbow. Start with the lightest pink and transition as follows...pink, purple, lavender, dark blue, aqua, teal, dark green, lime, yellow, orange and finally red. From each of the 29 fabrics, cut one 3 ½" and one 5 ½" by WOF strips. Keep the same color gradation throughout both the cutting and block construction steps.

Sub Cut the 3 ½" strip. Start with the strip folded in half matching the selvages. First cut two template B pieces with the 3 ½" squared edge towards the selvages. Next cut four Template A pieces. Then open up the fabric and cut a 5th Template A piece. These two templates are cut at the same angle so by flipping the templates to either cut edge there is no fabric wasted between cuts.

Sub cut the 5 ½" strip to get 4 Template C pieces, 1 Template D and 2 (maybe 3) Template A's. I found it easiest to first cut the four 3" diamonds (template C) with the fabric folded in half. Then open the strip to a single layer and cut one 5 ½" diamond (Template D) and the 2 or 3 long triangles (Template A) from the remaining fabric. If you are familiar with using the 60 degree mark on your ruler, the 3" and 5 ½" diamonds can be cut easily without using Templates C and D.

Save the fabric left over, approximately 4 inches, to be used for any specific color need and/or binding.

**Creating your blocks, color palette:** Please note that you will be working with bias edges. Your good friend will be spray starch to keep these edges from stretching.

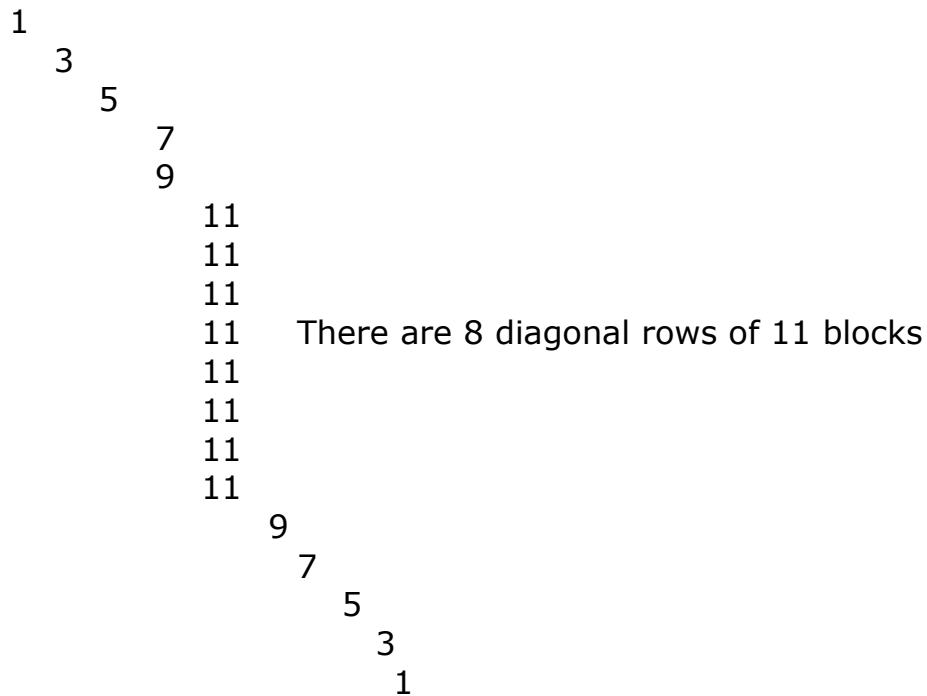
Half Triangle Diamond blocks: From each fabric, set 1 long triangle aside for possible top/bottom setting triangles. This block uses 2 fabrics cut to Template A. Sew two long triangles along their longest edge taking care to not stretch the fabrics. Arrange your pairings to not be more than 4 -5 colors away in either direction from the fabric placement in your rainbow gradation. Have many pairings with colors closely positioned, just do not move too far away, thus the 4 -5 guideline. Use the photo for guidance. Press the sewn seam open and spray starch your block. These blocks were designed to be slightly oversized, square them up using Template D, keeping your seam down the center of the block.

Quarter Diamond blocks: These blocks are made like a 4-patch except using four 3" diamonds, Template C. Again, arrange your pairings to be no more than 4-5 colors away in your gradation. Proper alignment when sewing triangles or diamonds comes from matching the fabric pieces to where the ¼" seam intersects, not at the edge of the fabric. Sew into pairs, press towards the darker fabric and then sew the pairs, matching the center point, to create the quarter diamond block. Press this seam open and spray starch your block. Check and true against Template D, but these blocks should be right on.

Large Diamond blocks: These blocks are cut from the 5 ½" strip using Template D. Spray starch them to protect your bias edge.

**Quilt Construction:** This quilt is constructed with the diamond blocks laying long ways, or horizontally. The rows are formed along diagonals and will require setting triangles to complete. This now becomes a design wall project (or since it is large...a design floor project). In creating the blocks, in the previous steps, you have created a color or fabric palette. Now is time for your creativity, use the color gradation originally set to arrange your fabrics. The top right corner of the quilt is your true red and the bottom left is your light pink. The color transitions are up to you. Please note, that if you need a very specific color transition and it is not in your pre-made blocks, I have left you enough fabric in that extra 4" to create what you need. Try to use what you have pre-cut/made, therefore leaving fabric choices for your binding.

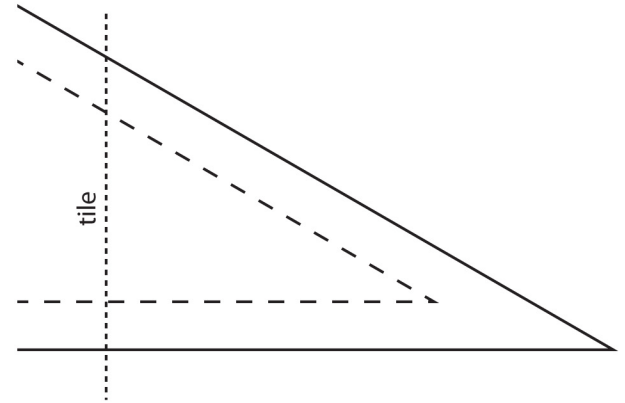
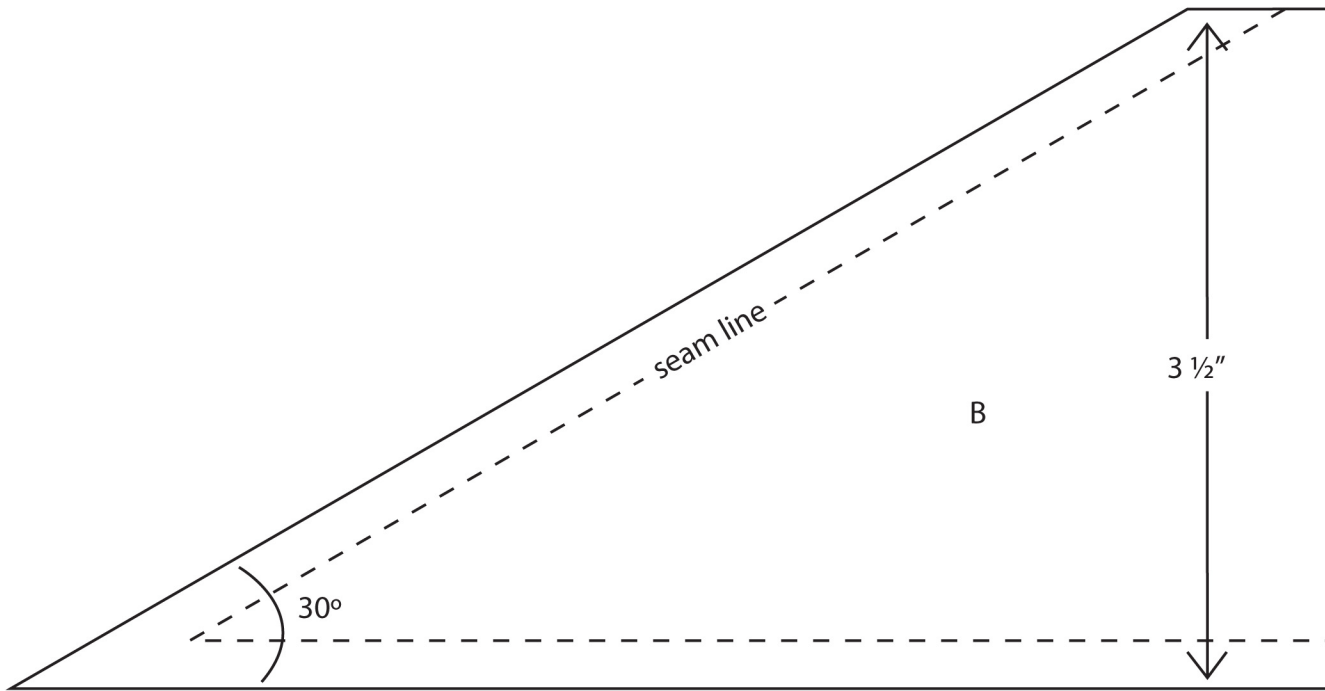
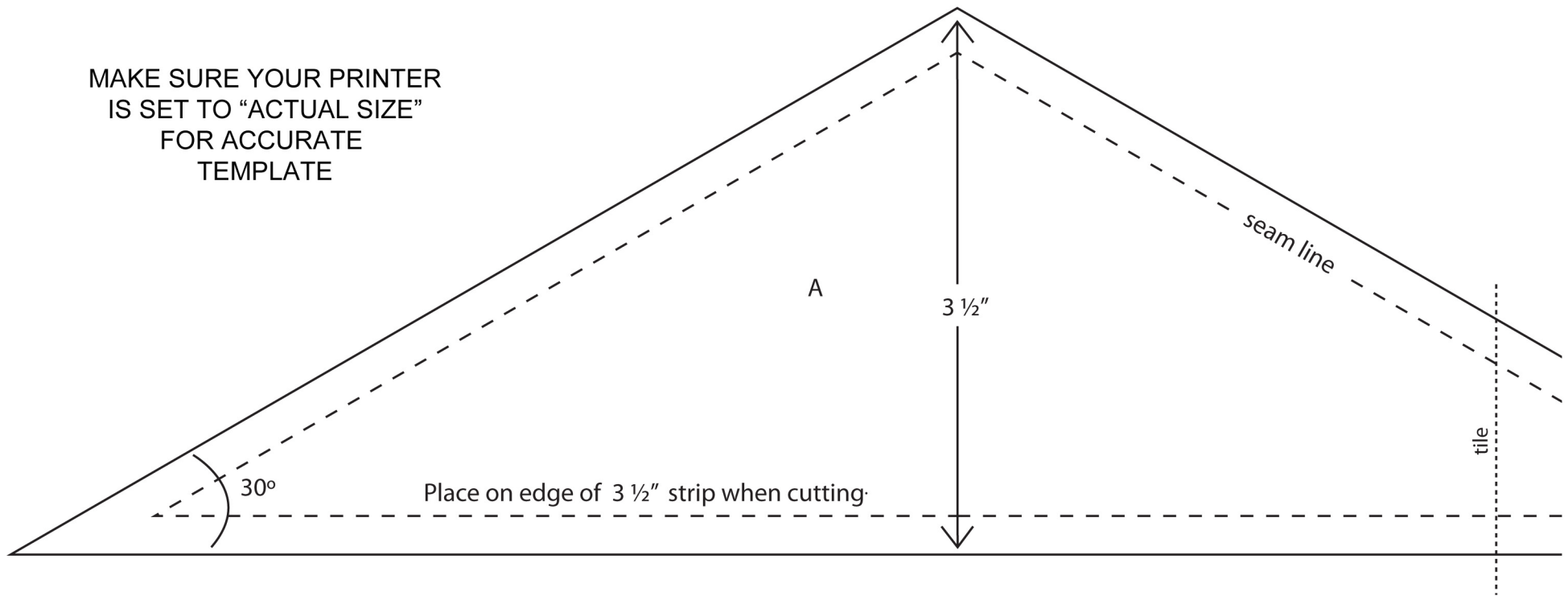
I first laid out the full blocks and left the setting side pieces for later. There are 6 full blocks along the top. You will have extra blocks. The number of blocks in each diagonal row is as follows:



Once the block layout is set, add the setting triangles. The top and bottom use the long half diamond triangle, Template A and the sides use two of Template B. You will need to first sew the chosen two Template B's together, press the seam open, spray starch, and finally trim the point to size using Template D...before sewing into your diagonal row. Note: when sewing your diamonds together, just like when sewing triangles, the points of your fabric extend beyond the blocks. The proper alignment for the seam is made by matching at the 1/4" seam intersection. Sew your diagonal rows, and then join your rows matching points. Finally add the corners which are all Templates B's. Note: your side and corner pieces will extend beyond the diamond blocks by more than 1/4". This is by design so once the quilt top is complete you will trim the edges accounting for a seam allowance for sewing your binding.

**Binding:** After the quilting is complete, add the binding. This quilt uses different color binding strips to coordinate with the colors in usage in the quilt. No need to get too particular over this. Use a general fabric over a color area. For example, one orange fabric was used over the entire area that transitioned orange to yellow. The binding was cut at 2 1/2" from the extra fabric once the quilt top was completed. Not all the fabrics were used. FYI, the quilt model only used 11 fabrics for the binding.

MAKE SURE YOUR PRINTER  
IS SET TO "ACTUAL SIZE"  
FOR ACCURATE  
TEMPLATE



MAKE SURE YOUR PRINTER  
IS SET TO "ACTUAL SIZE"  
FOR ACCURATE  
TEMPLATE

