

RIDGE ROCK

Quilt design by Linda Fitch featuring fabrics from the "Ridge Rock" collection,
a part of the HOFFMAN SPECTRUM digital-print division



Quilt Size 62" x 74"

Free pattern available from www.HoffmanFabrics.com

HOFFMAN SPECTRUM
DIGITAL PRINT

HOFFMAN FABRICS
CALIFORNIA-INTERNATIONAL

“Ridge Rock” featuring fabrics from the “Ridge Rock” collection a part of the HOFFMAN SPECTRUM digital-print division

Quilt Design by Linda Fitch

Quilt Yardage Chart

Fabric	Style	
A	M4224 533-Rainforest	¾ yard
D	M4225 533-Rainforest	¾ yard
B	M4226 126-Birch	¾ yard
C	M4227 533-Rainforest	¾ yard
E	M2738 246-Amazon	¼ yard
H	M2738 303-Frog	¼ yard
I	M2738 597-December	¼ yard
F	M2758 550-Big Sur	¼ yard
G	M2760 14-Purple	¼ yard
O	1895 84-Wheat	1 ½ yard
M	1895 225-Rosemary	¼ yard
L	1895 334-Peter	¼ yard
K	1895 467-Seacliff	¼ yard
J	1895 513-Volcano*	¾ yard
N	1895 595-October	¼ yard



M4224 533-Rainforest

A

*Yardage includes binding.

BACKING: Ridge Rock coordinate of your choice 4 ¾ yards



M4225 533-Rainforest

D



M4226 126-Birch

B



1895 84-Wheat

O



1895 225-Rosemary

M



1895 334-Peter

L



1895 467-Seacliff

K



1895 513-Volcano

J*



1895 595-October

N



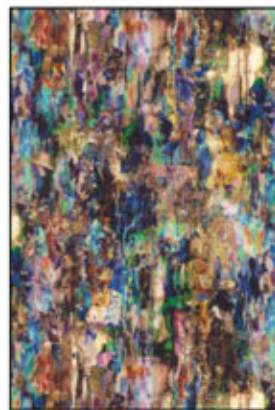
M2738 246-Amazon

E



M2738 303-Frog

H



M4227 533-Rainforest

C



M2738 597-December

I



M2758 550-Big Sur

F



M2760 14-Purple

G

View swatches and download quilt patterns at www.hoffmanfabrics.com

Fabric Requirements

Fabric Label	Yardage	Fabric Color	Location
Fabric A	3/4 Yard	M4224 533-Rainforest	Block A
Fabric B	3/8 Yard	M4226 126-Birch	Block B
Fabric C	5/8 Yard	M4227 533-Rainforest	Block C, E, F, G, H, I
Fabric D	3/8 Yard	M4225 533-Rainforest	Block D
Fabric E	1/4 Yard	M2738 246-Amazon	Block E
Fabric F	1/4 Yard	M2758 550-Big Sur	Block F
Fabric G	1/4 Yard	M2760 14-Purple	Block G
Fabric H	1/4 Yard	M2738 303-Frog	Block H
Fabric I	1/4 Yard	M2738 597-December	Block I
Fabric J	7/8 Yard	1895 513-Volcano	Block I and Binding
Fabric K	1/4 Yard	1895 467-Seacliff	Block F
Fabric L	1/4 Yard	1895 334-Peter	Block E
Fabric M	1/4 Yard	1895 225-Rosemary	Block H
Fabric N	1/4 Yard	1895 595-October	Block G
Fabric O	1-1/8 Yard	1895 84-Wheat	All Blocks
Backing	4-2/3 Yards		
Batting	66" x 78"		

General Information

- All seams are sewn with a 1/4" seam allowance.
- Pre-wash and press with spray starch before cutting.
- WOF = Width of Fabric.
- Press seams open as much as possible to decrease bulk.
- Finished Block is 12" Square.
- Label all pieces when cut for less confusion.

Instructions

Step 1 – Cutting the Fabrics

1. Fabric A – Cut (2) strips at 12-1/2" x WOF – Sub-cut into (6) 12-1/2" squares – Block A.
2. Fabric B – Cut (1) strip at 12-1/2" x WOF – Sub-cut into (3) 12-1/2" squares – Block B.
3. Fabric C – Cut as follows:
 - a. Cut (1) strip at 12-1/2" x WOF – Sub-cut into (3) 12-1/2" squares – Block C.
 - b. Cut (3) strips at 1-7/8" x WOF – Sub-cut into (60) 1-7/8" squares – Blocks E, F, G, H, and I.
4. Fabric D – Cut (1) strip at 12-1/2" x WOF – Sub-cut into (3) 12-1/2" squares – Block D.
5. Fabric E – Cut (1) strip at 6-1/2" x WOF – Sub-cut into (3) 6-1/2" squares – Block E.
6. Fabric F – Cut (1) strip at 6-1/2" x WOF – Sub-cut into (3) 6-1/2" squares – Block F.
7. Fabric G – Cut (1) strip at 6-1/2" x WOF – Sub-cut into (3) 6-1/2" squares – Block G.
8. Fabric H – Cut (1) strip at 6-1/2" x WOF – Sub-cut into (3) 6-1/2" squares – Block H.
9. Fabric I – Cut (1) strip at 6-1/2" x WOF – Sub-cut into (3) 6-1/2" squares – Block I.
10. Fabric J – Cut (2) strips at 3-1/2" x WOF – Sub-cut into (12) 3-1/2" x 6-1/2" rectangles – Block I. From the balance of the fabric cut (8) strips at 2-1/2" x WOF for the BINDING.
11. Fabric K – Cut (2) strips at 3-1/2" x WOF – Sub-cut into (12) 6-1/2" x 3-1/2" rectangles – Block F.
12. Fabric L – Cut (2) strips at 3-1/2" x WOF – Sub-cut into (12) 6-1/2" x 3-1/2" rectangles – Block E.
13. Fabric M – Cut (2) strips at 3-1/2" x WOF – Sub-cut into (12) 6-1/2" x 3-1/2" rectangles – Block H.
14. Fabric N – Cut (2) strips at 3-1/2" x WOF – Sub-cut into (12) 6-1/2" x 3-1/2" rectangles – Block G.

15. Fabric O – Cut as follows:

- a. Cut (60) 3-1/2" squares – Blocks E, F, G, H, and I.
- b. Cut (60) 3-1/2" squares and draw a diagonal line onto the WRONG side from tip to tip – Blocks A, B, C, and D.

Step 2 – Blocks A, B, C, and D

Note: Blocks A, B, C, and D are all sewn exactly the same way except for the fabric will change. Use Finished Block A as your example.

16. Layer (1) Fabric O 3-1/2" square with the drawn line UP onto (1) corner of (1) Fabric A 12-1/2" square and sew on the drawn line. Trim 1/4" past the seam towards the OUTSIDE and press. Sew the remaining THREE corners exactly the same way to finish the block at 12-1/2" square – Make (6) – Label "Block A" and set aside for use later.
17. Prepare "Block B" except replace Fabric A with Fabric B – Make (3) – Label and set aside for use later.
18. Prepare "Block C" except replace Fabric A with Fabric C – Make (3) – Label and set aside for use later.
19. Prepare "Block D" except replace Fabric A with Fabric D – Make (3) – Label and set aside for use later.



Step 3 – Sewing Block G

Note: Blocks E, F, G, H, and I are all sewn exactly the same way except for the fabric will change. Use Finished Block G as your example. Sew Block G first then sew the remaining blocks. The small square at the corners of the center are prepared as a "Y" seam. It is easier to insert the square after the block was sewn.

Preparing the Pieces

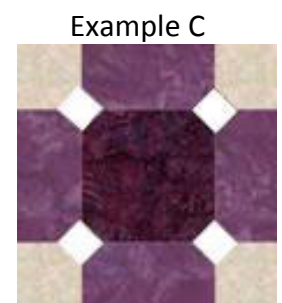
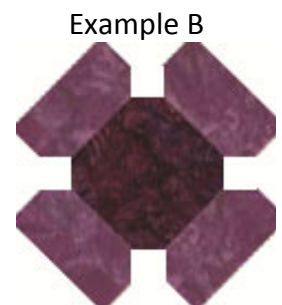
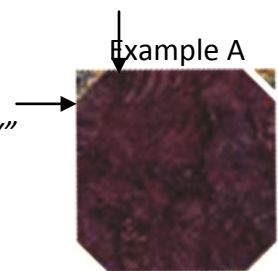
20. Make a mark with a WHITE fabric pencil 1-1/4" in from the outer edge of (1) Fabric G 6-1/2" square on all corners – this will be a total of (8) marks – See Example A (one corner is marked). Align a small ruler at 45° and cut 1/4" past the marks towards the outside as shown in Example A upper right corner. Prepare (3).
21. Do the same process on (4) Fabric N 6-1/2" x 3-1/2" rectangle on one of the 6-1/2" edges – you will need to mark (2) corners only as this will become the inside seam which will be sewn to the center (Fabric G). Prepare (12).
22. Do the same process on (4) Fabric O 3-1/2" squares – Only do (1) corner. Prepare (12).

Sewing the Pieces the were Prepared

23. Layer (1) Fabric N from Instruction No. 21 onto one edge of (1) Fabric G from Instruction No. 20 with RIGHT SIDES together and pin at the marks. Sew between the marks – be sure to back stitch for added security. Sew the remaining three sides exactly the same as shown in Example B.
24. Layer (1) Fabric O from Instruction No. 22 onto one edge of Fabric N – pin to secure from outer edge to the mark and sew to the mark – be sure to back stitch for added security. Sew the adjacent edge the same way to finish the corner. Sew the remaining three corners exactly the same way.

Inserting Fabric C 1-7/8" Square to Finish the Block

25. Draw a line on all four edges 1/4" in from the outer edges on (4) Fabric C 1-7/8" squares. This will give you the marks you need to match seams to create the "Y" seam that is required. (*I would do all (60) of them at this time to save time later.*)



26. Layer onto ONE corner of Fabric G and pin at the marks to secure (the marks should match the seam between Fabric G and Fabric N. Stitch between the marks – be sure to back stitch for added security.
27. Rotate Fabric C clockwise onto Fabric N – pin and stitch.
28. Rotate Fabric C clockwise onto Fabric O – pin and stitch.
29. Rotate Fabric C clockwise onto Fabric N – pin and stitch to finish one of the squares.
30. Repeat from Instruction No. 26 until all FOUR of Fabric C 1-7/8” squares have been inserted to finish Block G at 12-1/2” square.
31. Repeat from Instruction No. 20 two more times to complete at total of (3) blocks – press – Label “Block G” and set aside for use later.

Remaining Blocks E, F, H, and I

Note: See the “Block Layout” for assistance with Block Colors.

32. Repeat Instruction No. 20 to Instruction No. 30 THREE times to make Block E – replace Fabric G with Fabric E – Replace Fabric N with Fabric L. Fabric O and Fabric C are the same – Label “Block E” and set aside for use later.
33. Repeat Instruction No. 20 to Instruction No. 30 THREE times to make Block F – replace Fabric G with Fabric F – Replace Fabric N with Fabric K. Fabric O and Fabric C are the same – Label “Block F” and set aside for use later.
34. Repeat Instruction No. 20 to Instruction No. 30 THREE times to make Block H – replace Fabric G with Fabric H – Replace Fabric N with Fabric M. Fabric O and Fabric C are the same – Label “Block H” and set aside for use later.
35. Repeat Instruction No. 20 to Instruction No. 30 THREE times to make Block I – replace Fabric G with Fabric I – Replace Fabric N with Fabric J. Fabric O and Fabric C are the same – Label “Block I” and set aside for use later.

Step 4 – Sewing the Blocks Together

Note: There are FIVE blocks per row and SIX rows that measure 60-1/2” x 12-1/2”. Refer to the “Block Layout” as a guide when sewing the rows.

36. Row 1 – Block I, Block A, Block H, Block D, Block F.
37. Row 2 – Block C, Block G, Block A, Block I, Block C.
38. Row 3 – Block H, Block B, Block E, Block A, Block G.
39. Row 4 – Block A, Block I, Block C, Block F, Block A.
40. Row 5 – Block F, Block D, Block G, Block B, Block E.
41. Row 6 – Block B, Block E, Block A, Block H, Block D.
42. Sew the rows together at the 60-1/2” edge to finish the quilt top at 60-1/2” x 72-1/2”.

Step 5 – Finishing the Quilt

43. Layer the backing, batting, and quilt top and quilt as desired.
44. Using Fabric J 2-1/2” strips – join all the 2-1/2” strips at the 2-1/2” edge and sew on the binding to finish the quilt.

