

Hoffman

CALIFORNIA-INTERNATIONAL FABRICS

Sweet Thing Quilt

Quilt design by Stephanie Prescott of A Quilters Dream
featuring fabrics from the "Simply Eclectic" collection
by Hoffman California International Fabrics



Finished Quilt : 38 1/2" x 51 1/2"

Free pattern available at hoffmanfabrics.com



Made To Inspire

"Sweet Thing"

Featuring fabrics by Hoffman California Fabrics

Quilt Yardage Chart

FABRIC	
N4251 - 296 - Steel	1/4 yard
N4252 - 483 - Fog	1/4 yard
N4253 - 28 - Silver	1/4 yard
N4254 - 521 - Mist	1/4 yard
N4255 - 399 - Mercury	1 3/4 yards
N4253 - 391 - Blush	1/8 yard
Binding * (N4256 - 48 - Gray)	3/8 yard

BACKING: Simply Eclectic coordinate of your choice. 1 3/4 yards



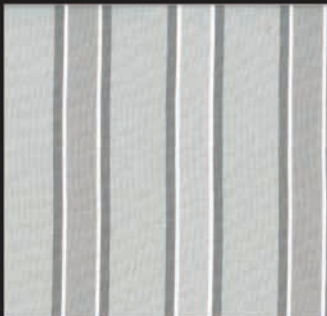
N4251 - 296 - Steel



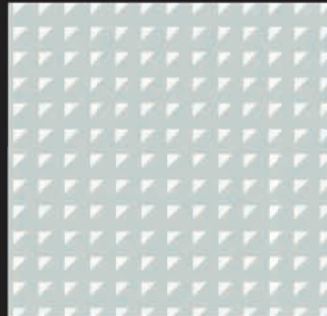
N4252 - 483 - Fog



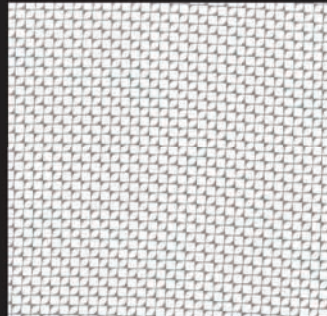
N4253 - 28 - Silver



N4256 - 48 - Gray*



N4254 - 521 - Mist



N4255 - 399 - Mercury



N4253 - 391 - Blush

View swatches and download quilt patterns at hoffmanfabrics.com

Sweet Thing

Fabric Requirements:

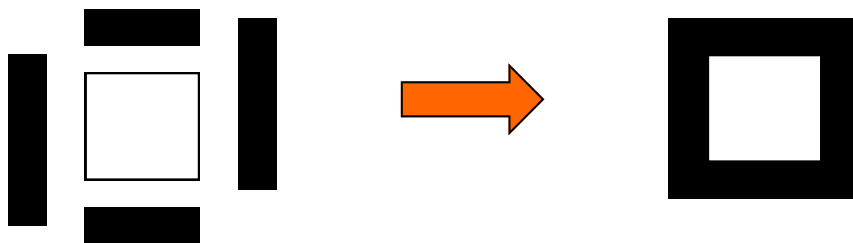
- $\frac{1}{4}$ yd of (4) fabrics for center of block
- $1 \frac{3}{4}$ yds background and setting triangles
- $\frac{1}{8}$ yd accent fabric

Cutting Instructions:

1. Cut a $5 \frac{1}{2}$ inch strip from each of the $\frac{1}{4}$ yard center fabrics. Sub cut the strips into the following number of $5 \frac{1}{2}$ inch squares.
 - Fabric #1 – 5 squares
 - Fabric #2 – 6 squares
 - Fabric #3 – 4 squares
 - Fabric #4 – 3 squares
2. Take the background fabric and cut (15) $2 \frac{1}{2}$ inch strips. Take six of these strips and sub cut into (36) $2 \frac{1}{2} \times 5 \frac{1}{2}$ units. Take the remaining nine strips and sub cut into (36) $2 \frac{1}{2} \times 9 \frac{1}{2}$ units. Put remaining fabric aside for setting triangles.
3. Cut the accent fabric into (3) $1 \frac{1}{2}$ inch strips then sub cut into (72) $1 \frac{1}{2}$ inch squares.

Constructing the Block:

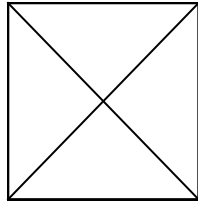
1. Take (1) of the center $5 \frac{1}{2}$ squares, (2) of the $2 \frac{1}{2} \times 5 \frac{1}{2}$ and (2) $2 \frac{1}{2} \times 9 \frac{1}{2}$ units. Sew the $2 \frac{1}{2} \times 5 \frac{1}{2}$ units to opposite sides of the square. Sew the $2 \frac{1}{2} \times 9 \frac{1}{2}$ units to the other two sides of the square.
2. Block will measure $9 \frac{1}{2}$ inches.
3. Take (4) $1 \frac{1}{2}$ inch squares. Place one – right sides together – in one corner of sewn block. Draw a line from corner to corner as shown. Sew along drawn line. Cut off excess fabric $\frac{1}{4}$ inch from the sewn line toward the center of the block. Repeat with the other three squares on the other three corners. One block down!
4. Repeat steps 1 and 2 for all center blocks, backgrounds and accents until all (18) blocks have been made.



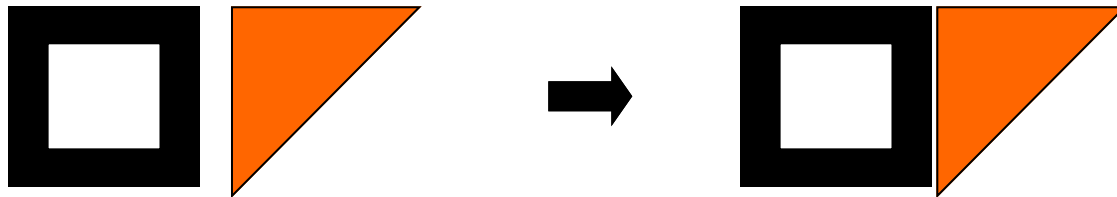
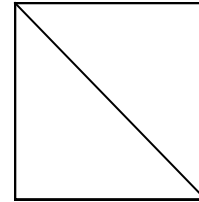
Setting Triangles:

1. Cut a $14 \frac{1}{2}$ strip from the background fabric. Cut strip into (3) $14 \frac{1}{2}$ inch squares and then cut the square diagonally in both directions to yield (4) setting triangles from each square.
2. Cut a $7 \frac{3}{4}$ inch strip from background fabric and cut into (2) $7 \frac{3}{4}$ inch squares. Cut these 2 squares diagonally *once* to yield 2 *corner* triangles from each square.

Setting
Triangles



Corner
Triangles



Sweet Thing Layout Guide

38 x 51

