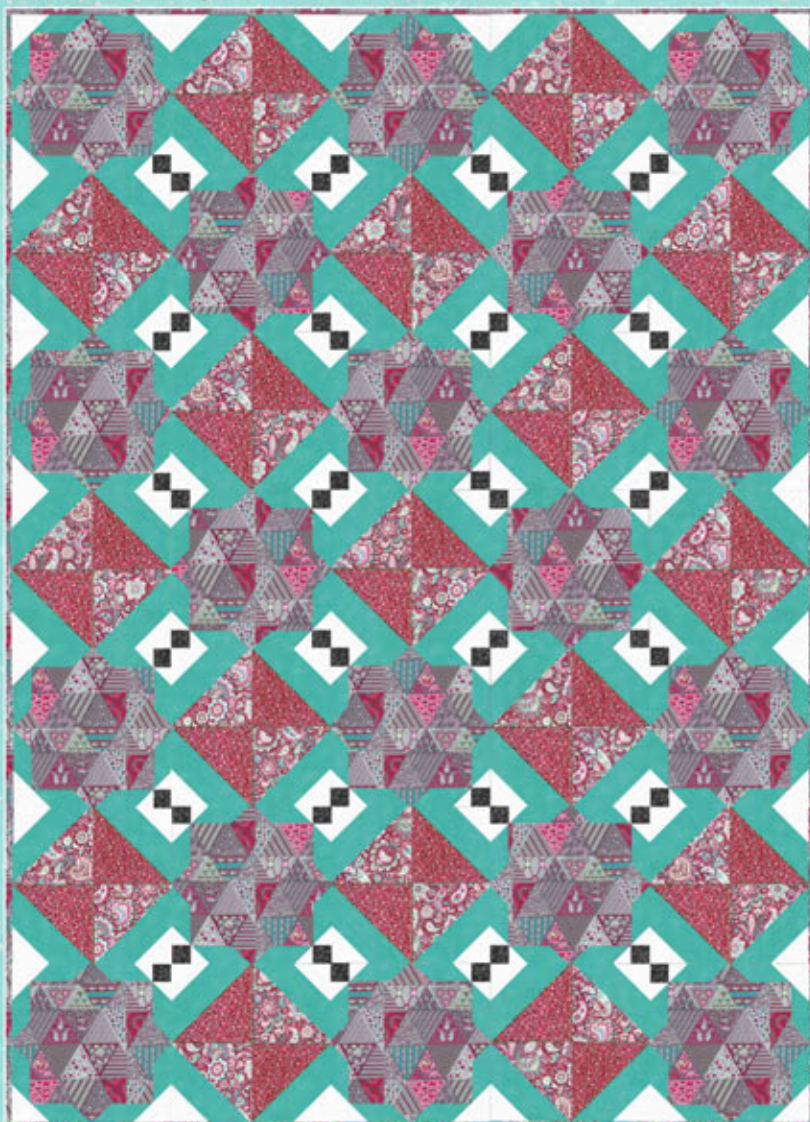


TALIA

Quilt design by Sharon McConnell of Color Girl Quilts featuring fabrics from the "Talia" collection by Hoffman California Fabrics

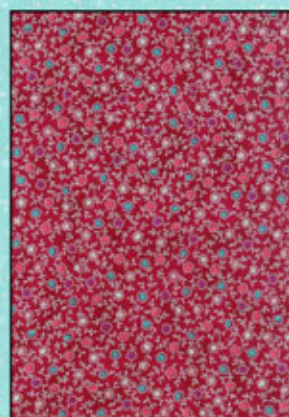
Pewter Colorway



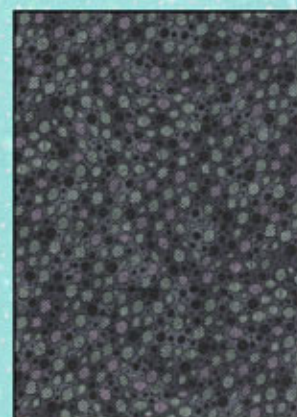
M7456 76S-Pewter Silver



M7457 35S-Claret Silver



M7458 35S-Claret Silver



M7459 76S-Pewter Silver

Free pattern available from www.HoffmanFabrics.com

Quilt Size 50" x 70"

Quilt Yardage Chart

Pewter Colorway	
M7456 76S-Pewter Silver*	1 3/4 yard
M7457 35S-Claret Silver	5/8 yard
M7458 35S-Claret Silver	5/8 yard
M7459 76S-Pewter Silver	1/4 yard
G8555 3S-White Silver	1 yard
G8555 61S-Turquoise Silver	1 3/4 yard



G8555 3S-White Silver



G8555 61S-Turquoise Silver

HOFFMAN FABRICS
CALIFORNIA-INTERNATIONAL

*Yardage includes binding.

BACKING: Talia coordinate of your choice. 3 1/4 yards cut crosswise.

To see more quilt designs by Sharon go to:
www.colorgirlquilts.com

“Talia” featuring fabrics by Hoffman Fabrics

Quilt Design by Sharon McConnell of Color Girl Quilts

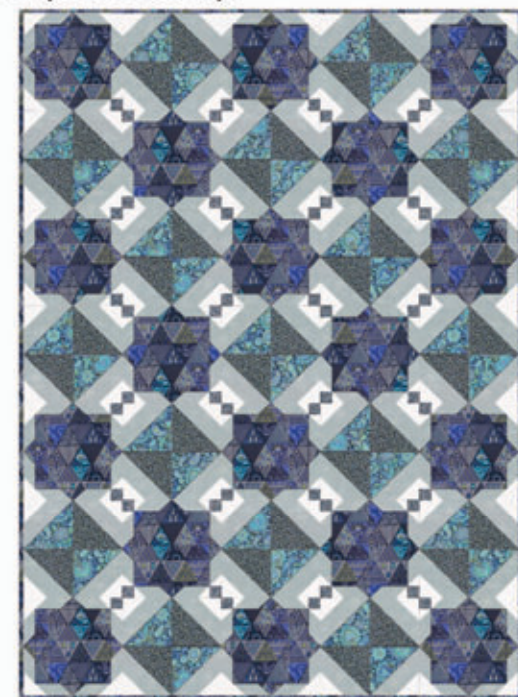
Quilt Yardage Chart

Ceylon Colorway	Cinnabar Colorway	
M7456 421S-Ceylon Silver*	M7456 528G-Cinnabar Gold*	1 ¾ yard
M7457 421S-Ceylon Silver	M7457 528G-Cinnabar Gold	¾ yard
M7458 421S-Ceylon Silver	M7458 528G-Cinnabar Gold	¾ yard
M7459 454S-Dune Silver	M7459 528G-Cinnabar Gold	¼ yard
G8555 3S-White Silver	G8555 33G-Cream Gold	1 yard
G8555 113S-Frost Silver	G8555 39G-Rust Gold	1 ¾ yard

*Yardage includes binding.

BACKING: Talia coordinate of your choice. 4 ½ yards (1 kit); 54 yards (12 kits)

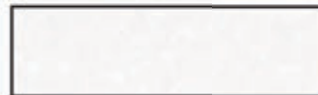
Ceylon Colorway



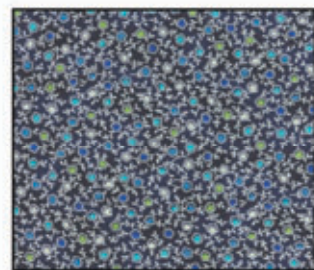
M7456 421S-Ceylon Silver



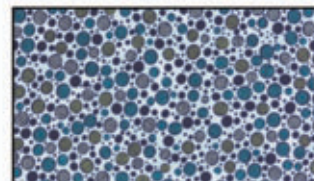
M7457 421S-Ceylon Silver



G8555 3S-White Silver



M7458 421S-Ceylon Silver

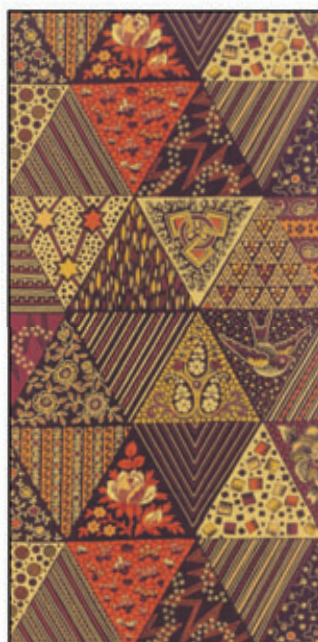


M7459 454S-Dune Silver



G8555 113S-Frost Silver

Cinnabar Colorway



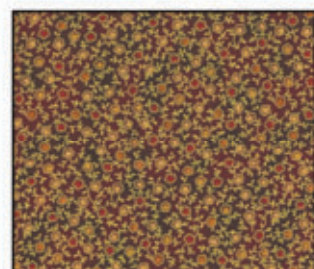
M7456 528G-Cinnabar Gold



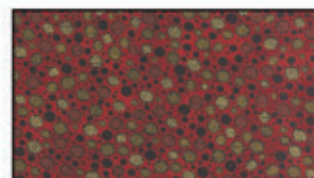
M7457 528G-Cinnabar Gold



G8555 33G-Cream Gold



M7458 528G-Cinnabar Gold



M7459 528G-Cinnabar Gold



G8555 39G-Rust Gold

Talia



Quilt design and pattern by Sharon McConnell colorgirlquilts.com
Fabrics by Hoffman Fabrics hoffmanfabrics.com

Talia Quilt
50" x 70"

Fabric Requirements

Based on the Talia Collection in three color ways by Hoffman Fabrics

Fabric	Quantity	Ceylon	Cinnabar	Pewter
G8555 "medium solid"	1 3/4 yard	Frost/silver	Rust/gold	Turquoise/silver
G8555 "light solid"	1 yard	white/silver	Cream/gold	White/silver
M7456 "large print" ***	1 3/4 yard	Ceylon/silver	Cinnabar/gold	Pewter/silver
M7459 "dark print"	1/4 yard	Dune/silver	Cinnabar/gold	Pewter/silver
M7457 "medium print"	5/8 yard	Ceylon/silver	Cinnabar/gold	Pewter/silver
M7458 "medium print"	5/8 yard	Ceylon/silver	Cinnabar/gold	Pewter/silver
Backing	3 1/4 yard	choice of print		
Batting	58" X 78"			

*** Includes binding

Cutting Instructions

“WOF” = “width of fabric” or approximately 42”

Fabric	First cut,	Then sub-cut, (total amount needed)
M7456 “large print”	4 strips 7 1/2” x wof 4 strips 3 1/2” x wof	(18) 7 1/2” squares (72) 3 1/2” x 2” rectangles
M7459 “dark print”	3 strips 2” x wof	(48) 2” squares
M7457 “medium print”	3 strips 6” x wof	(17) 6” squares, cut diagonally to yield 34 half-square triangles
M7458 “medium print”	3 strips 6” x wof	(17) 6” squares, cut diagonally to yield 34 half-square triangles
G8555 “medium solid”	5 strips 6” x wof 7 strips 4” x wof	(34) 6” squares, cut diagonally to yield 68 half-square triangles (144) 4” x 2” rectangles
G8555 “light solid”	8 strips 3 1/2” x wof 3 strips 2” x wof	(92) 3 1/2” squares (48) 2” squares

Sew!

Sew with rights sides of fabric facing, 1/4” seam allowance. Press after each seam.

Block “A”



Corner Block, Make 4



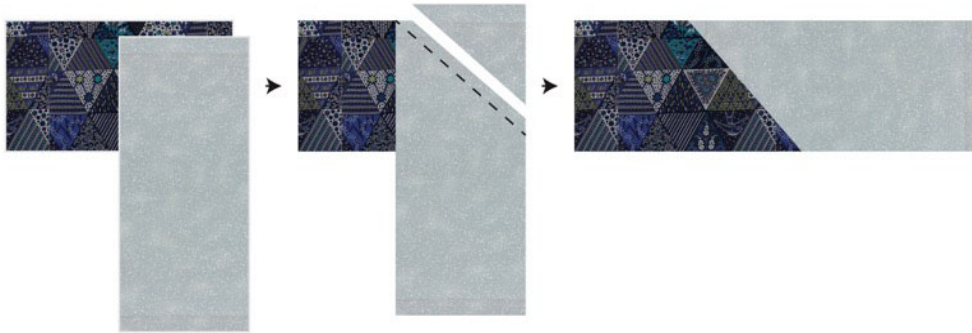
Edge Block, Make 6



Interior Block, Make 8

1. Place one 4” medium solid rectangle, right side facing, one 3 1/2” x 2” large-print rectangle at a right angle so that the rectangles overlap at one corner.
2. Mark a diagonal line through the solid rectangle as shown. Sew on the line.

- Trim excess corner fabric 1/4" from seam. Open and press.



- Repeat steps 1-3 to add a second medium solid rectangle to the other side of the large-print rectangle, forming a triangle within a strip.



- Make 72 of these units. Reserve 14 of them ("W" units). The rest will have light solid fabric corners added as follows.
- Place one 2" light solid square over one end of the triangle strip made above. Mark a diagonal line through the square. *Ensure the angle of the marked line is the same as the angle of the print triangle on that side.*
- Sew marked line, trim excess corner fabric and press.



Make 38 "X"

Make 10 "Y"

Make 10 "Z"

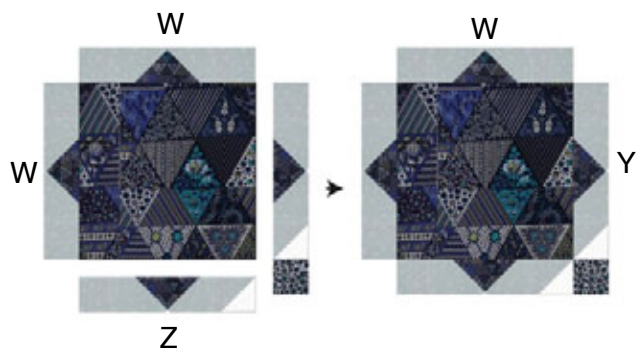
- Make 10 of these units with the light triangle on the right end of the strip ("Y"). Make 10 of these units with the light triangle on the left end of the strip ("Z") as shown above.
- Repeat steps 6-7 to add light triangles to both ends of 38 of the triangle strips ("X").
- For the interior blocks, sew "X" triangle strips (with two light triangles) to opposite sides of **eight** of the 7 1/2" large-print squares. Press toward the squares.
- Sew 2" dark print squares to both ends of 16 "X" triangle strips. Press toward the squares.

12. Sew these “X” triangle strips with dark squares to the remaining two sides of the eight blocks started in step 10.



Interior Block A
Make 8

13. For the corner blocks (illustrations below), sew “W” triangle strips (without light triangles) to two adjacent sides of **four** of the 7 1/2” large-print squares. Press toward the square.
14. Sew a “Z” strip to the bottom side of the four corner blocks. Press toward the square.
15. Sew one dark print 2” square to four “Y” triangle strips. *The dark square must be sewn to the end with the light triangle as shown below.* Press toward the square
16. Sew the “Y” strips with squares to the remaining side of the four blocks. Press.

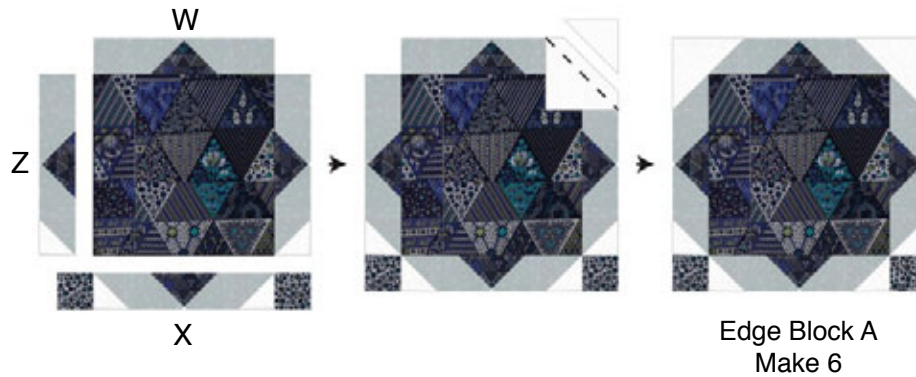


17. Place a light solid 3 1/2” square over the upper right corner of the block as shown below. Mark the diagonal of the square and sew on that line.
18. Trim excess corner fabric 1/4” from the seam, open and press.



Corner Block A
Make 4

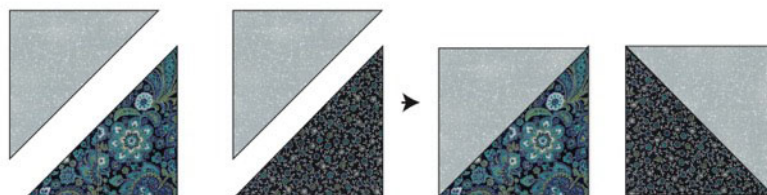
19. Repeat step 17 to add light triangles to the three corners without the dark square as shown.
20. For the edge blocks, sew a “W” triangle strip (no light triangles) to the top of **six** of the 7 1/2” large-print squares. Press toward the square.
21. Sew a “Z” strip to the left side of the squares and a “Y” strip to the right side as shown below. Press toward the center square.



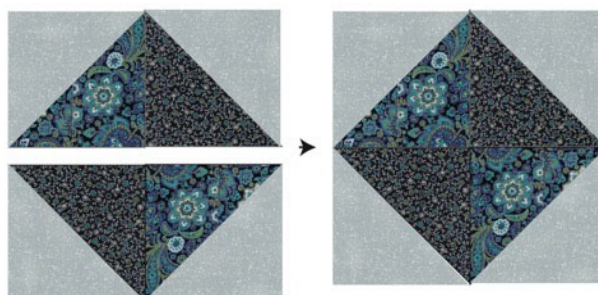
22. Sew dark print 2” squares to both ends of 6 “X” strips. Press toward the squares.
23. Sew an “X” strip with two dark squares to the remaining side of each block. Press.
24. Follow steps 17-18 to add 3 1/2” light triangles to two corners as shown above. Press.

Block “B”

25. Pair each 6” medium print (both types) half-square triangle (HST) with a medium solid 6” HST. Sew together on angled edge, forming a square. Make 34 of each print/solid unit.
26. Trim and square as needed to 5 1/2”.



27. Arrange four HST units made in step 25 so that the prints form an hourglass and the medium solid triangles are on all four corners.
28. Sew the HST units together first in pairs and then into a block. Make 17.



29. Place a 3 1/2" light solid square over one corner, right sides facing as in steps 17-18. Mark the diagonal of the square and sew on that line. Trim excess corner fabric 1/4" from seam. Open and press.
30. Repeat step 29 to add light triangles to all four corners.
31. Make 17 "B" blocks.

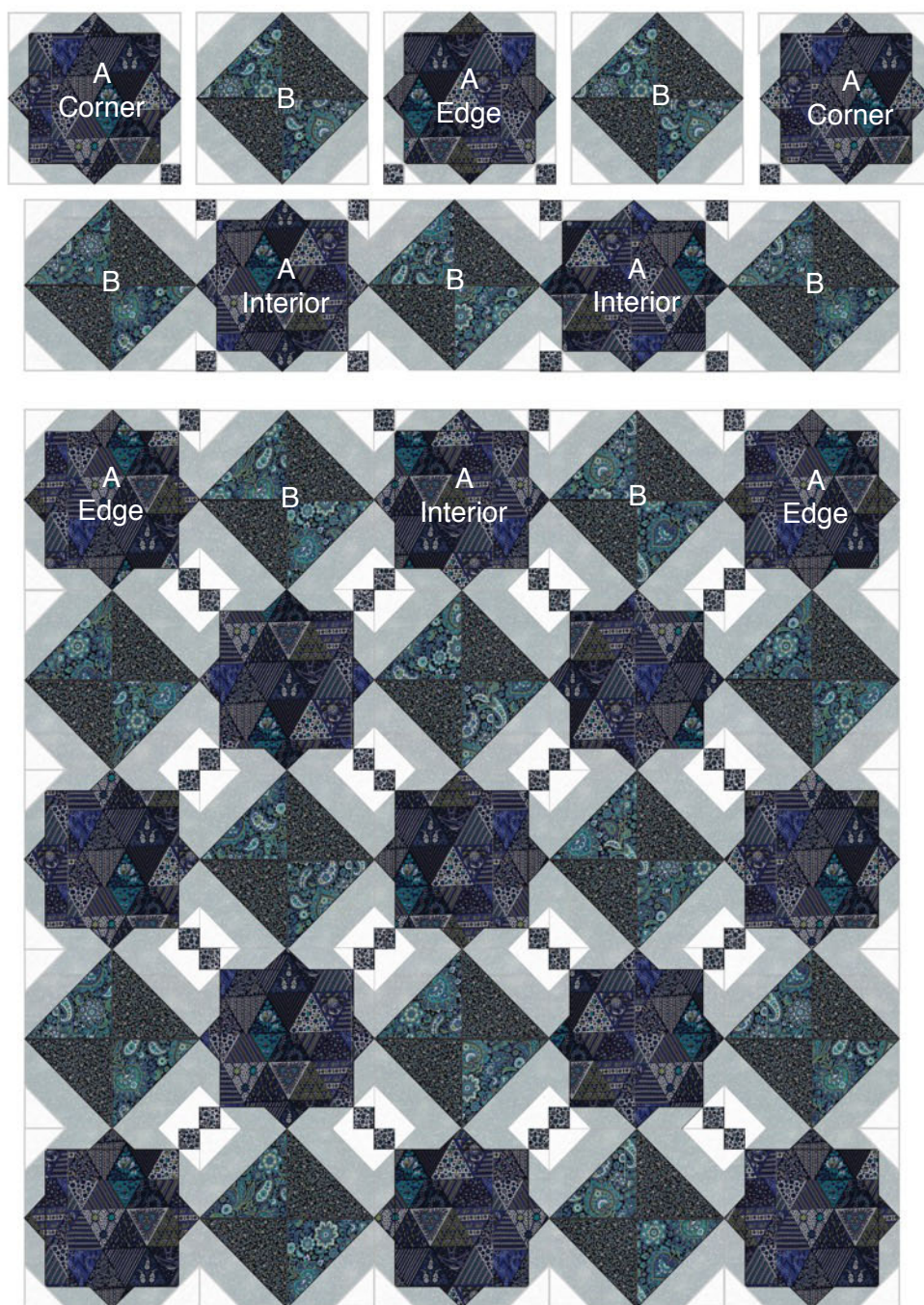


Block B
Make 17

Assemble the Quilt

32. Arrange the first row of blocks beginning and ending with an "A" corner block, oriented with the dark square toward the quilt center.
33. Alternate "B" blocks with one "A" edge block and a second "A" corner block. The first row is a total of five blocks. **See quilt layout diagram on the next page.**
34. The second row begins and ends with a "B" block. The "B" blocks alternate with "A" interior blocks.
35. Press toward the "B" blocks in each row.
36. Continue to arrange and sew a total of seven rows, alternating "A" and "B" blocks. The last row is the same as the first.
37. Sew rows together to complete the quilt top.
38. Press backing fabric and trim selvedge edges. Cut 3 1/4 yard piece in half to yield two pieces approximately 61" x 42"
39. Sew these pieces together to yield one piece approximately 61" x 83". Press.
40. Layer backing fabric face down, then batting, then quilt top face up.
41. Baste layers together with pins or stitches to secure for quilting. Quilt as desired.
42. Trim selvedge edges from binding fabric. Cut six strips 2 1/4" by width of fabric (straight or bias as preferred).
43. Piece strips end to end to length sufficient to edge quilt. Sew to quilt edge and finish using preferred method.

Talia Quilt Layout Diagram
Sew seven rows of five blocks



Quilt design and pattern by Sharon McConnell for Hoffman Fabrics. Pattern is available for download for personal use and may not be copied, shared or sold without permission.