

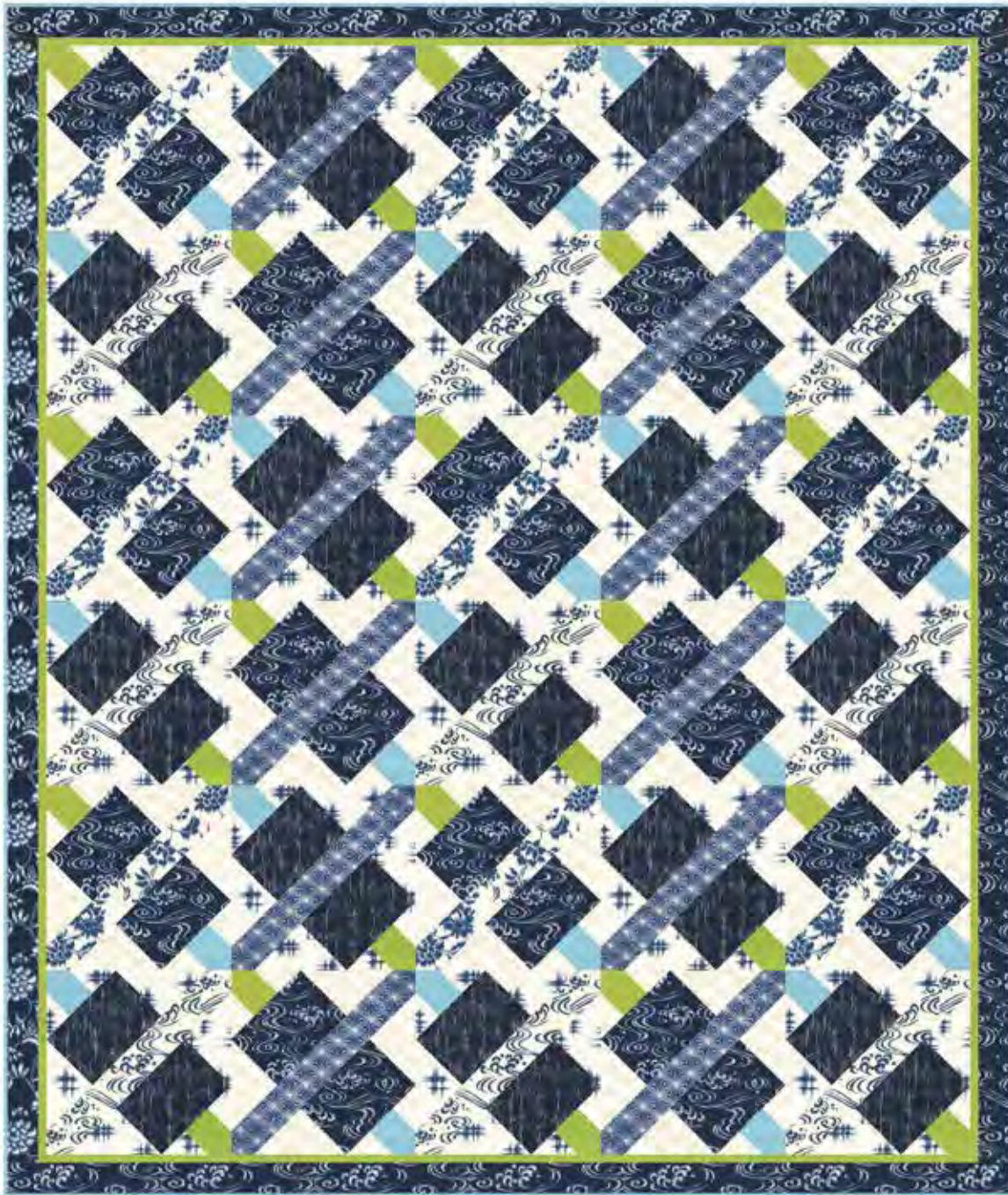


HOFFMAN FABRICS
EST.1924

TWIST & TURN

INTERMEDIATE | ONE FULL DAY CLASS

Finished Quilt: 65" x 77"



Quilt design by Toby Lischko of Gateway Quilts, featuring Indigo Summer. Clean, simple shapes highlight the classic indigo look. Thoughtful pops of color highlight the interesting piecing.

Free pattern available at hoffmanfabrics.com



Yardage Chart

FABRIC	
P4330 19-Navy	5/8 yard
P4330 33-Cream	1/2 yard
P4331 33-Cream	1 yard
P4332 19-Navy	3/4 yard
P4332 33-Cream	1/2 yard
P4333 19-Navy	3/4 yard
P4334 19-Navy	5/8 yard
P4334 33-Cream	1 yard
100 16-Sky	3/4 yard
100 652-Avocado	1/2 yard



P4330 19-Navy



P4330 33-Cream



P4331 33-Cream



P4332 19-Navy



P4332 33-Cream



P4333 19-Navy



P4334 19-Navy



P4334 33-Cream



100 16-Sky



100 652-Avocado

Twist and Turn

Indigo Summer Collection

Quilt designed by Toby Lischko on EQ7

Quilt size: 65" x 77" Block size: 12"

Fabric	Sku#	Yardage
1	100-652 Avocado	1/2 yard
2	P4334-33 Cream	1 yard
3	P4330-33 Cream	1/2 yard
4	P4332-19 Navy	3/4 yard
5	P4331-33 Cream	1 yard
6	P4334-19 Navy	5/8 yard
7	P4333-19 Navy	3/4 yard
8	P4332-33 Cream	1/2 yard
9	100-16 Sky	3/4 yard
10	P4330-19 Navy	5/8 yard
	Backing	4-3/4 yards
	Batting	71" x 83"

PLEASE READ ALL INSTRUCTIONS BEFORE BEGINNING

General instructions

- * All seams are sewn with 1/4".
- * Press seams in the direction of the arrows unless instructed otherwise.
- * HST refers to Half-Square Triangles; squares cut once diagonally into two triangles.
- * QST refers to Quarter-Square Triangles; squares cut twice diagonally into four triangles.

CUTTING INSTRUCTIONS (Based on 42" Width of fabric - WOF)

Fabric 1 (100-652 Avocado) and **9** (100-16 Sky)
From each:

- * Cut **three** 2-5/8" x WOF strips; sub-cut into (30) 2-5/8" x 4".
- * From Fabric 1 cut **six** 1" x WOF strips for border 1.
- * From Fabric 9 cut **seven** 2-1/4" x WOF strips for the binding.

Fabrics 2 (P4334-33 Cream) and **5** (P4331-33 Cream)

From each:

* Cut **two** 4-1/4" x WOF strips; sub-cut into (15) 4-1/4" squares. Cut each square twice diagonally into (60) QST.

* Cut **three** 7-1/4" x WOF strips; sub-cut into (15) 7-1/4" squares. Cut each square twice diagonally into (60) QST.

Fabrics 3 (P4330-33 Cream) and **8** (P4332-33 Cream)

From each:

* Cut **five** 2-5/8" x WOF strips. Cut into (9) 2-5/8" x 18-1/2".

Fabrics 4 (P4332-19 Navy) and **7** (P4333-19 Navy)

From each:

* Cut **five** 4-3/4" x WOF strips. Cut into (30) 4-3/4" x 6-7/8".

Fabric 6

* Cut **six** 2-5/8" x WOF strips. Cut into (12) 2-5/8" x 18-1/2".

Fabric 10

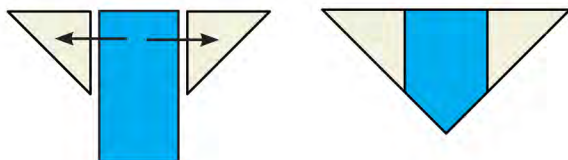
* Cut **seven** 2-1/2" x WOF strips for border 2.

GENERAL BLOCK PIECING INSTRUCTIONS

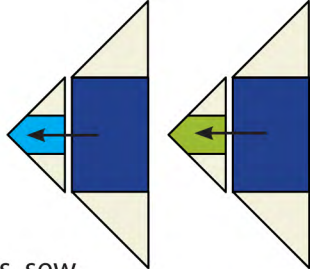
1. Sew a 7-1/4" Fabric 2 QST to two short sides of a 4-3/4" x 6-7/8" Fabric 4 rectangle. Press to triangles. Make 2 sets.



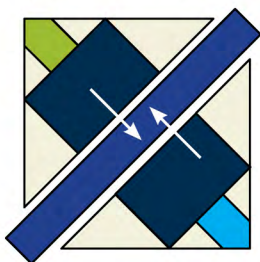
2. Sew a 4-1/4" QST to two sides of a 2-5/8" x 4" Fabric 9 rectangle. Using the corner of a ruler trim the rectangle to meet the triangles. Repeat with a Fabric 1 rectangle.



3. Sew the sections from steps 1 and 2 together. Press to smaller section.



4. Matching centers, sew a 2-5/8" x 18-1/2" Fabric 6 rectangle to both sections from step 3. Press to rectangle. Using the corner of a ruler trim the rectangle to meet the triangles. Make (6) Block 4.



Make (6) Block 4

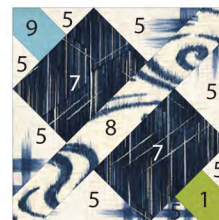
5. Repeat steps 1 through 4 to make the following blocks.



Make (9) Block 1
Fabrics 1, 2, 3, 4, 9



Make (6) Block 2
Fabrics 1, 5, 6, 7, 9



Make (9) Block 3
Fabrics 1, 5, 7, 8, 9

QUILT CONSTRUCTION

6. Following the cover quilt image, and the layout below, arrange the blocks, 5 across and 6 down, alternating and rotating blocks 1, 2, 3, and 4 in every other row.

BORDER CONSTRUCTION

7. Sew the 1" Fabric 1 strips short ends together with diagonal seams. Trim to two 1" x 72-1/2" (or your own personal measurement). Matching centers and ends, pin and sew to sides.

8. Trim the remaining Fabric 1 strip to two 1" x 61-1/2" and sew to top and bottom.

9. Repeat step 7 with the 2-1/2" Fabric 10 strips. (Trim to two 2-1/2" x 74-1/2".)

10. Trim the remaining Fabric 10 strip to 2-1/2" x 65-1/2" and sew to top and bottom.

Layer quilt, batting, and pieced backing and quilt as desired. Bind with the 2-1/4" Fabric 9 strips.

Put a label on the back and enjoy!

