

Near and Deer

Quilt design by Sharon McConnell of Color Girl Quilts featuring fabric from the "Near and Deer" collection by Hoffman California International Fabrics.



Finished Quilt: 54" x 65"

Free pattern available at hoffmanfabrics.com

"Near and Deer"

Featuring fabrics by Hoffman California Fabrics

Quilt Yardage Chart

FABRIC	
100 - 290 - Seahorse	7/8 yard
100 - 618 - Zinc	2/3 yard
N4258 - 4 - Black	1/3 yard
N4261 - 4 - Black	1/4 yard
N4260 - 4 - Black	1/3 yard
N4259 - 4 - Black	1/3 yard
N4256 - 4 - Black	1/4 yard
N4259 - 48 - Gray	1/3 yard
N4260 - 48 - Gray	1/4 yard
N4256 - 296 - Steel	7/8 yard*
N4261 - 48 - Gray	1/3 yard
N4258 - 48 - Gray	1/3 yard
N4261 - 64 - Tan	1/3 yard
N4256 - 64 - Tan	1/4 yard
N4259 - 64 - Tan	1/3 yard
N4260 - 64 - Tan	1/3 yard
N4258 - 64 - Tan	1/3 yard

*Binding Included



100-290-Seahorse



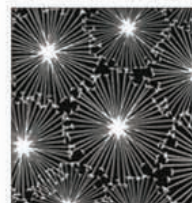
100-618-Zinc



N4258-4-Black



N4261-4-Black



N4260-4-Black



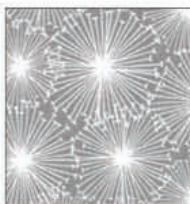
N4259-4-Black



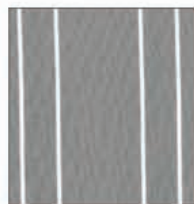
N4256-4-Black



N4259-48-Gray



N4260-48-Gray



N4256-296-Steel



N4261-48-Gray



N4258-48-Gray



N4261-64-Tan



N4256-64-Tan



N4259-64-Tan

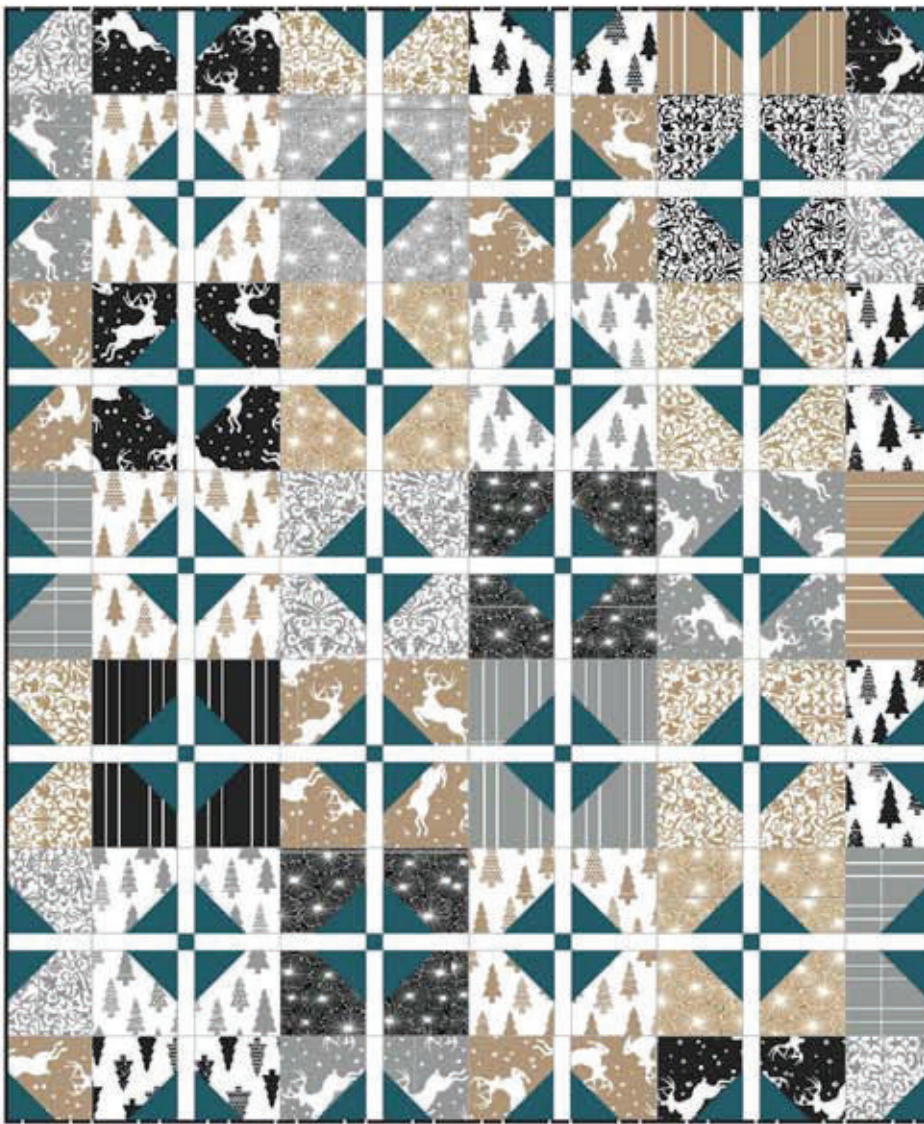


N4260-64-Tan



N4258-64-Tan

View swatches and download quilt patterns at hoffmanfabrics.com



Dear Heart



Fabric Requirements:

Based on standard 42" width of fabric
 Finished Quilt 54" x 65"
 Block size 11"

Variety of Prints from the Hoffman Fabrics collection, "Near and Dear" 4-1/3 yards

White Solid, Hoffman Fabrics "zinc" sku 100_618 2/3 yard

Blue Solid, Hoffman Fabrics "seahorse" sku 100_290 7/8 yard

Binding, Hoffman fabrics "Near and Dear" print of choice 1/2 yard

Backing "Near and Dear" print of choice 4-1/8 yards

Batting 62" x 73"

Copyright 2016 Color Girl Quilts
 by Sharon McConnell

Hoffman California Fabrics
hoffmanfabrics.com

Dear Heart quilt pattern is provided by Hoffman Fabrics as a free PDF download for personal use. No part of the pattern may be sold, copied or distributed.

cutting

Read all instructions prior to cutting fabrics
 “wof” = width of fabric, or approximately 42”

Fabric	First Cut,	Then Cut,
“Near and Dear” Prints	Cut the following “set” from like print: (4) 5 1/2” squares	Cut 29 sets from a variety of prints plus (4) 5 1/2” squares from different prints
“Zinc” White Solid	14 strips, 1 1/2” x wof	(98) 1 1/2” x 5 1/2” rectangles
“Seahorse” Blue Solid	1 strip 1 1/2” x wof 9 strips 3” x wof	(20) 1 1/2” squares (120) 3” squares

sewing

Sew with right sides of fabric facing and use 1/4” seam allowance. Press after each seam.

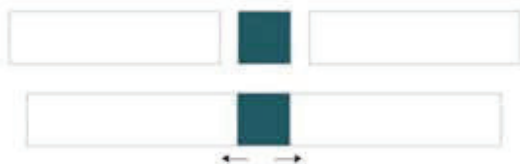
1. Begin with one 5 1/2” print square face up on design surface. Place a blue 1 1/2” square so that it covers the lower right corner. Mark the diagonal of the square as shown below.

2. Sew on the marked line. Trim 1/4” outside the seam. Open and press resulting triangle.

3. Repeat steps 1-2 with all 120 of the 5 1/2” print squares.



4. Sew one white 1 1/2” x 5” strip to both sides of a blue 1 1/2” square. Press toward the white. Make 20.

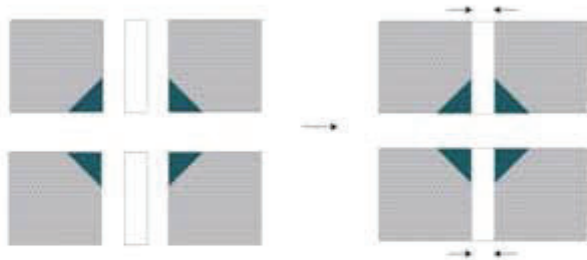


5. Choose nine sets of print squares to make the edge units. Sew one print square (made in step 1-2) to either side of a white 1 1/2” x 5 1/2” rectangle as shown above. Press toward the white. Make 18.

6. Reserve the four individual print squares for the corners of the quilt.



7. Divide the remaining 5 1/2” squares in sets of four like prints. Arrange one set like a four-patch. Ensure that the blue triangles are oriented toward the center of the block. See illustration on next page.

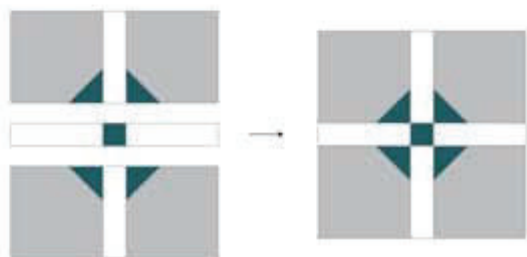


8. Sew the top two squares to opposite sides of a white 1 1/2" x 5" rectangle. Press toward the white. See illustration above.

9. Repeat step 8 for the bottom two squares.

10. Complete the block by sewing the two halves to opposite sides of a white strip/blue square unit made in step 4. See illustration below.

Make 20 blocks.



Arrange the Blocks

11. The first row of the quilt begins with a corner square (from step 6) oriented with the blue triangle in the upper left corner.

12. Arrange four half-block units (from step 5) horizontally with the blue triangles oriented to the top edge of the quilt, then a second corner square with the triangle in the upper right corner. See diagram below.

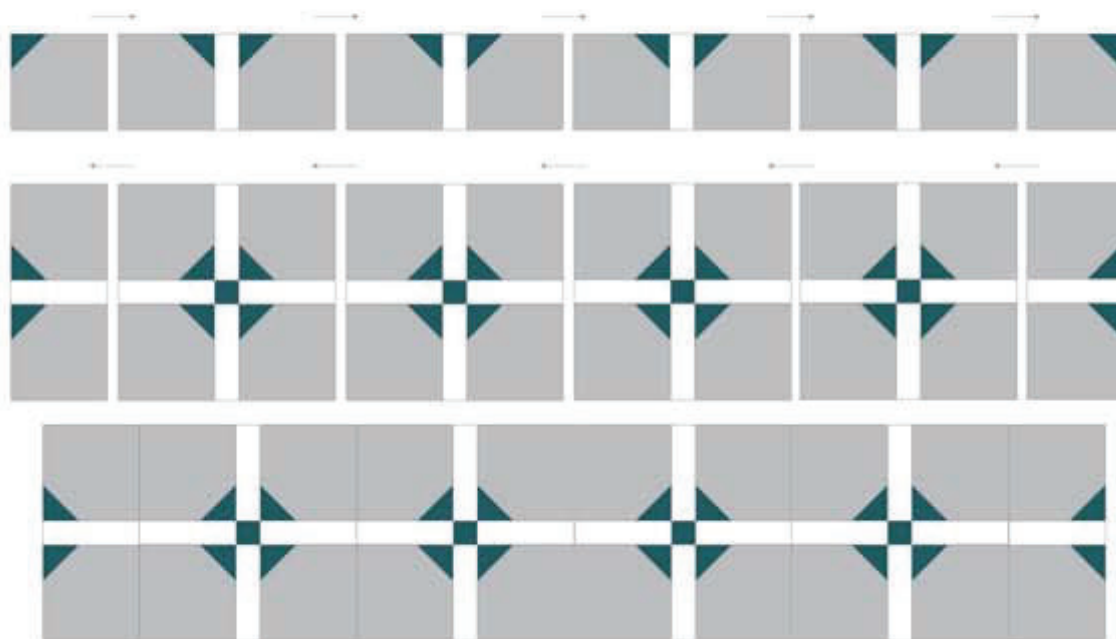
13. The second row begins with a half block set vertically with the blue triangles oriented to the left (edge of the quilt).

14. Arrange four full blocks, followed by a second half block oriented with the triangles to the right edge of the quilt.

15. Continue arranging blocks in the same manner for five full block rows. The last row is the same as the first row, using corner squares and half blocks (set horizontally) with blue triangles oriented to the bottom edge of the quilt. See full layout on next page.

16. When a pleasing arrangement of color and print is achieved, sew the blocks together to form rows. Press odd number row seams to the right, and even number row seams to the left.

17. Sew the rows together to complete the quilt top. Press well.



Finish the Quilt

18. Cut the selvage from the backing fabric and piece (as needed) and trim to 62" x 73". Cut batting to this size as well.

19. Layer backing fabric, face down, then batting, then quilt top face up. Smooth the layers and baste together using pins or stitches to secure for quilting.

20. Quilt as desired to emphasize each block or fabric print or use an all-over quilting design.

21. Cut the selvage from the binding fabric. Cut 2 1/4" strips by width of fabric.

22. Sew the binding strips together end-to-end and press seams open. Press strip in half lengthwise, resulting in a strip with one finished edge.

23. Apply binding strips to finish the edges of the quilt, using preferred method.

Visit Colorgirlquilts.com for visual tutorials on quilt binding methods, quilting patterns and blog.

Visit Hoffmanfabrics.com for fabric information and downloadable quilting patterns.

