



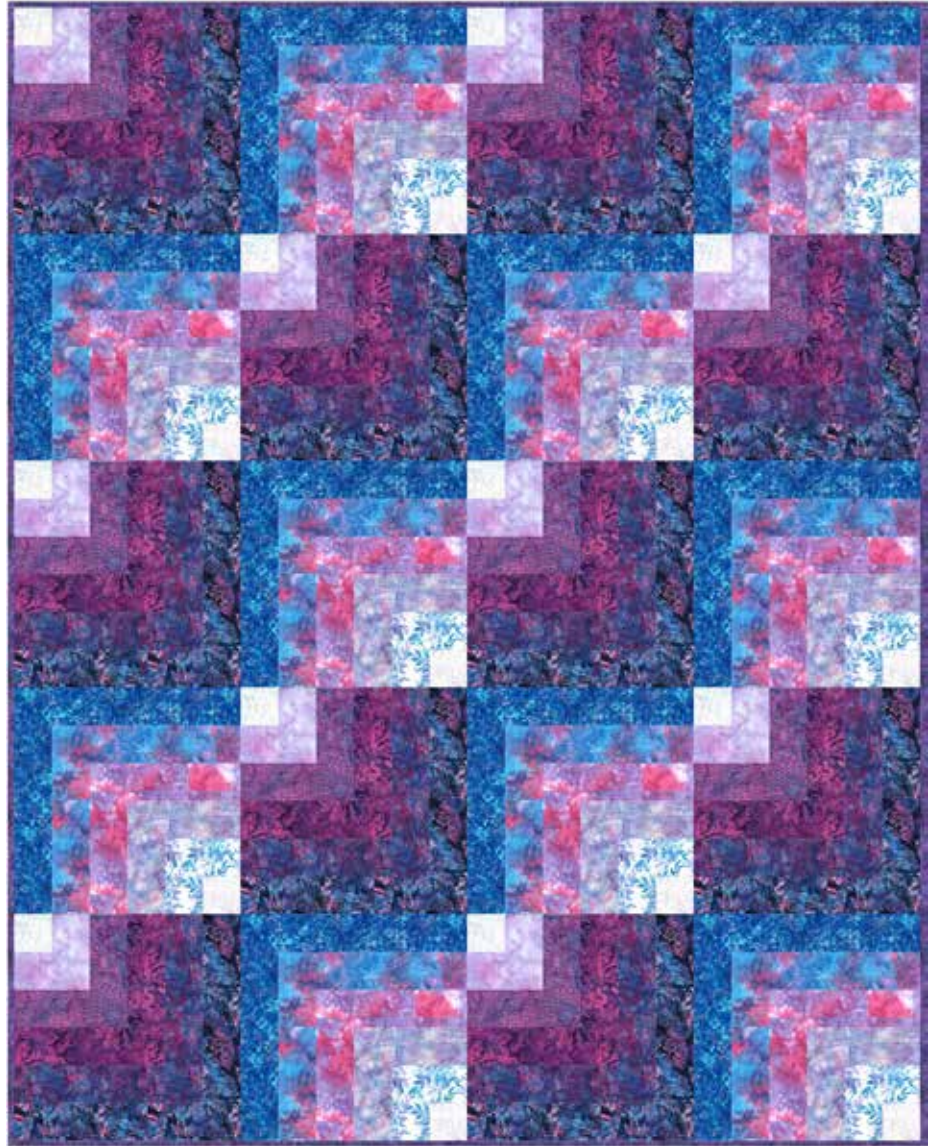
CONFIDENT BEGINNER | 1 DAY CLASS

# BUILDING CODE

Finished Quilt: 73"x 91"

Quilt design by Tourmaline & Thyme Quilts, featuring Hoffman Bali Batiks, the Cotton Candy Dreams collection.

Log Cabin blocks in a gradient layout make this stunningly simple twin quilt.



R2284 81-Violet

X2646 183-Glacier

X2650 229-Wisteria

X2651 261-Bluejay

X2653 598-New Years

X2658 482-Cotton Candy

885 30-Lilac

885 333-Peony

885 707-Powder Blue

1384 30-Lilac

1384 482-Cotton Candy

1384 649-Thistle

PURCHASE PATTERN

[ToumalineThymeQuilts.com](http://ToumalineThymeQuilts.com)

FABRICS	1 KIT	12 KITS	FABRICS	1 KIT	12 KITS
R2284 81-Violet	3/4 Yard*	1 Bolt	885 30-Lilac	1/3 Yard	1 Bolt
X2646 183-Glacier	1 /2 Yard	1 Bolt	885 333-Peony	2/3 Yard	1 Bolt
X2650 229-Wisteria	1 1/8 Yds	1 Bolt	885 707-Powder Blue	2/3 Yard	1 Bolt
X2651 261-Bluejay	1 1/8 Yds	1 Bolt	1384 30-Lilac	1/2 Yard	1 Bolt
X2653 598-New Years	3/4 Yard	1 Bolt	1384 482-Cotton Candy	1 Yard	1 Bolt
X2658 482-Cotton Candy	1 Yard	1 Bolt	1384 649-Thistle	3/4 Yards	1 Bolt

\* includes binding