



CONFIDENT BEGINNER | 1 DAY CLASS

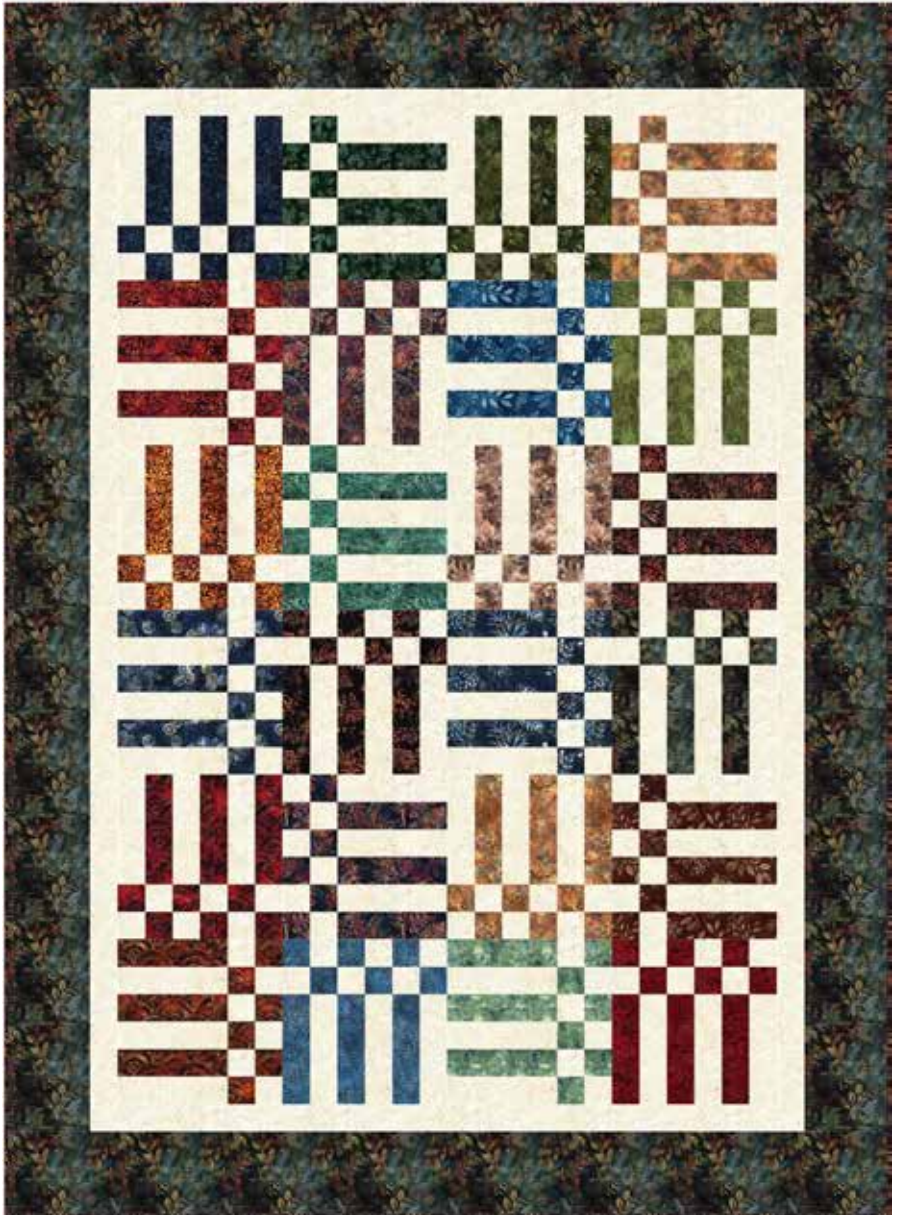
 *Material Girlfriends*

# CHECKED OFF

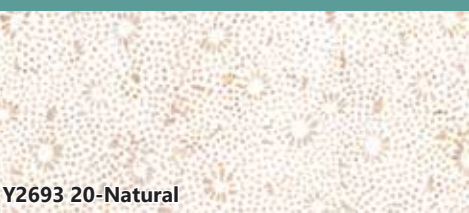
Finished Quilt: 64" x 88"

Quilt design by Material Girlfriends, featuring a Hoffman Bali Pop-Forest (40) 2 1/2" strips.

Easy to piece! This beginner-friendly quilt comes together in no time! The pattern includes multiple layout options and three generous sizes.



BP 44-Forest



Y2693 20-Natural



Y2699 116-Harvest



Y2700 428-Mulberry

| <b>FABRICS</b>     | <b>1 KIT</b>  | <b>12 KITS</b> |
|--------------------|---------------|----------------|
| BP 44-Forest       | 1 Pop         | 2 Boxes        |
| Y2693 20-Natural   | 1 3/4 Yards   | 2 Bolts        |
| Y2699 116-Harvest  | 2 1/4 Yards** | 2 Bolts        |
| Y2700 428-Mulberry | 2/3 Yard*     | 1 Bolt         |

\* includes binding

\*\* no seam outer border

**PURCHASE PATTERN**  
*MaterialGirlfriends.com*