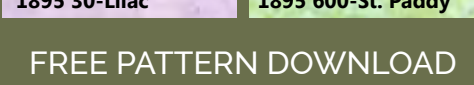
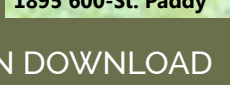
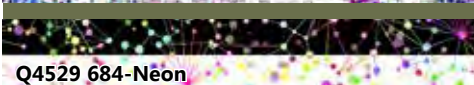


CHEMISTRY MAJOR

Finished Quilt: 70" x 86"

Quilt design by Wendy Sheppard, featuring Undeniable Chemistry, a Hoffman Spectrum Digital Print collection.

Nothing goes better together than black, white, and bright. The chemistry between these blocks is obvious.

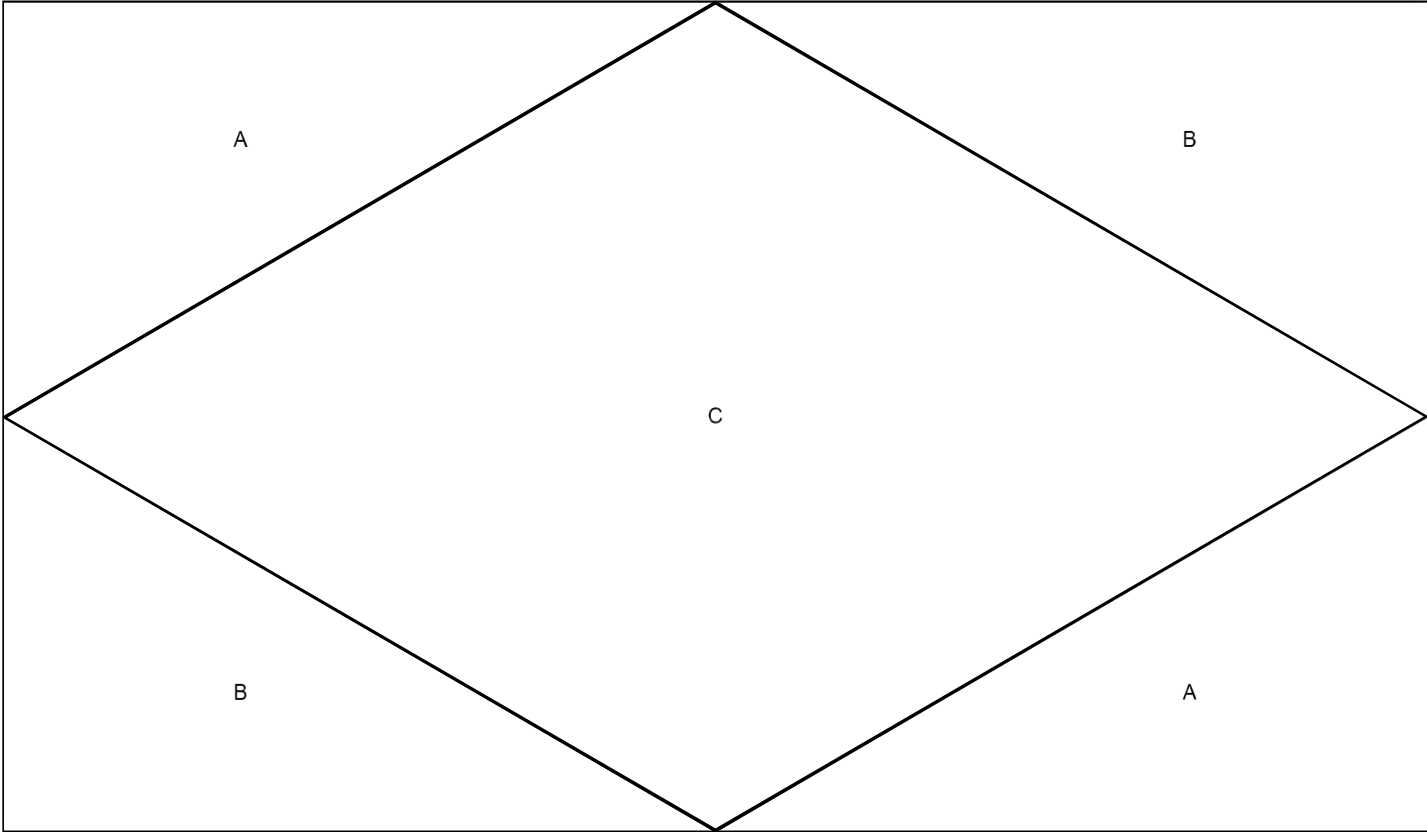


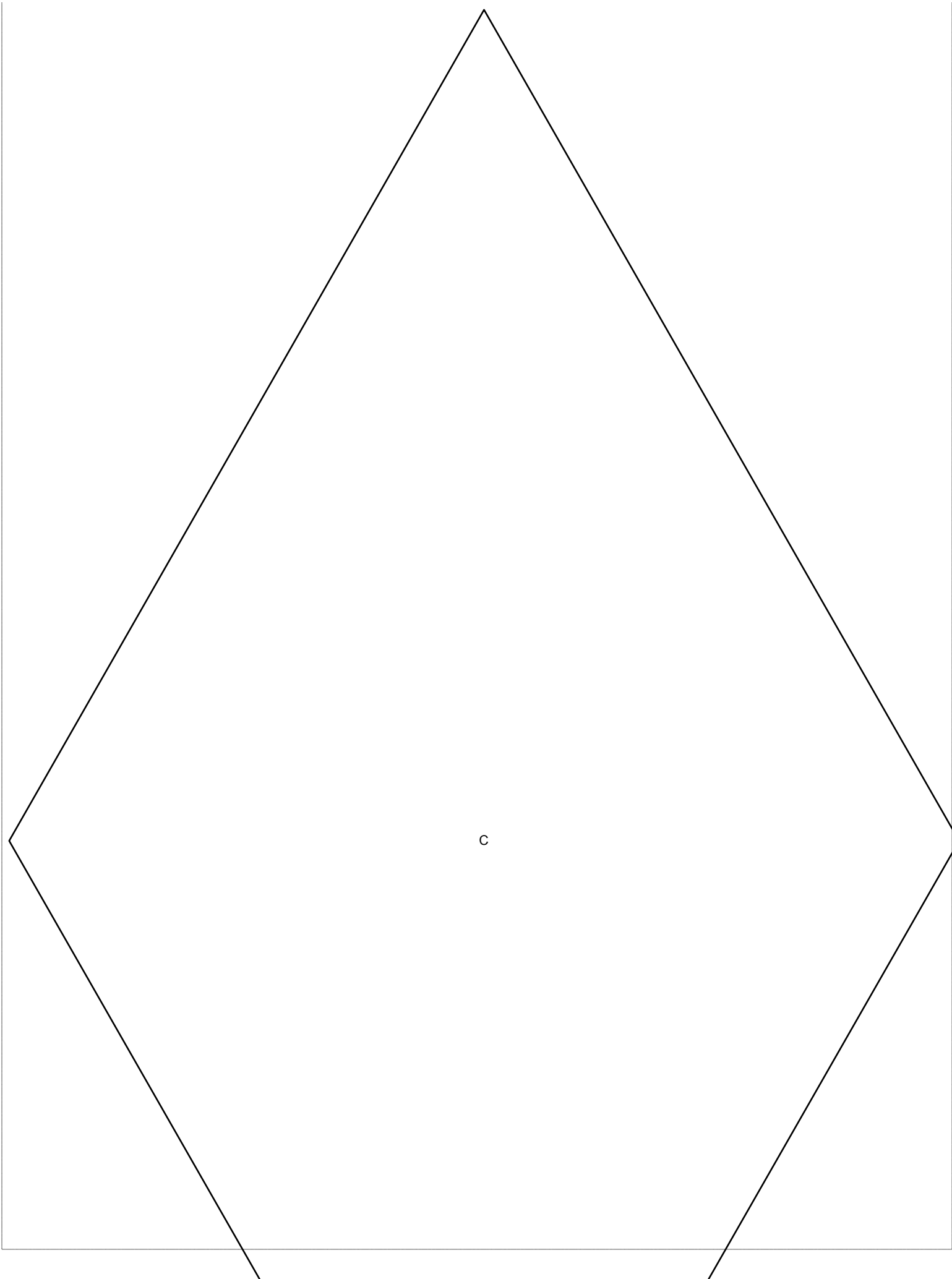
FABRICS	1 KIT
Q4526 235-Agate	1 1/2 Yards
Q4527 491-Taffy	1 1/2 Yards
Q4528 691-Glass	1 1/2 Yards
Q4529 684-Neon	1 1/8 Yards
Q4530 32-Bleached	5/8 Yard
Q4530 203-H2O	1 1/8 Yards
839 135-Pastel	1/2 Yard

FABRICS	1 KIT
885 145-Spring	5/8 Yard
885 437-Pansy	3/4 Yard*
1895 30-Lilac	5/8 Yard
1895 321-Gecko	3/4 Yard
1895 368-Coral Gables	1 1/8 Yards
1895 600-St. Paddy	3/4 Yard

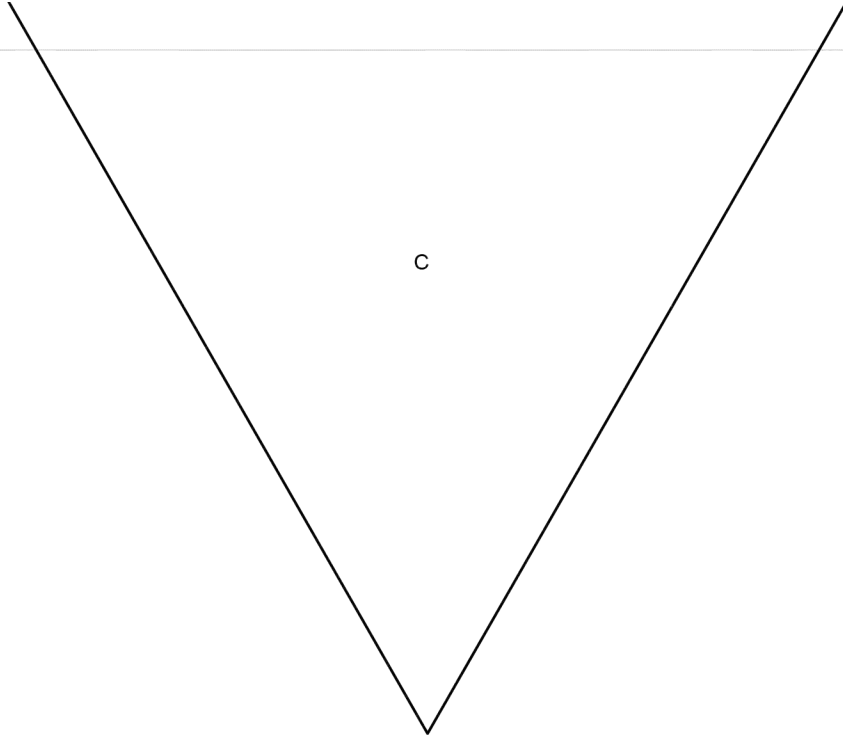
* binding

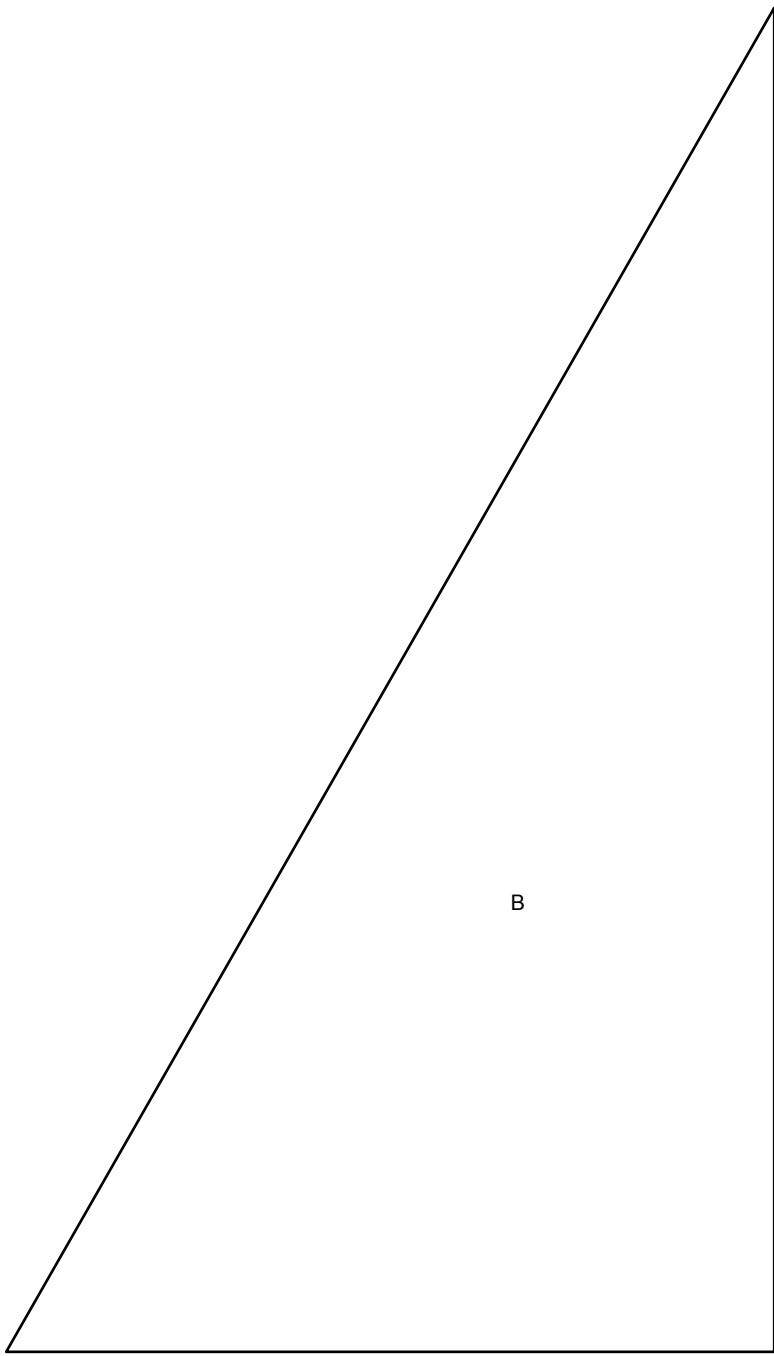
FREE PATTERN DOWNLOAD
HoffmanFabrics.com





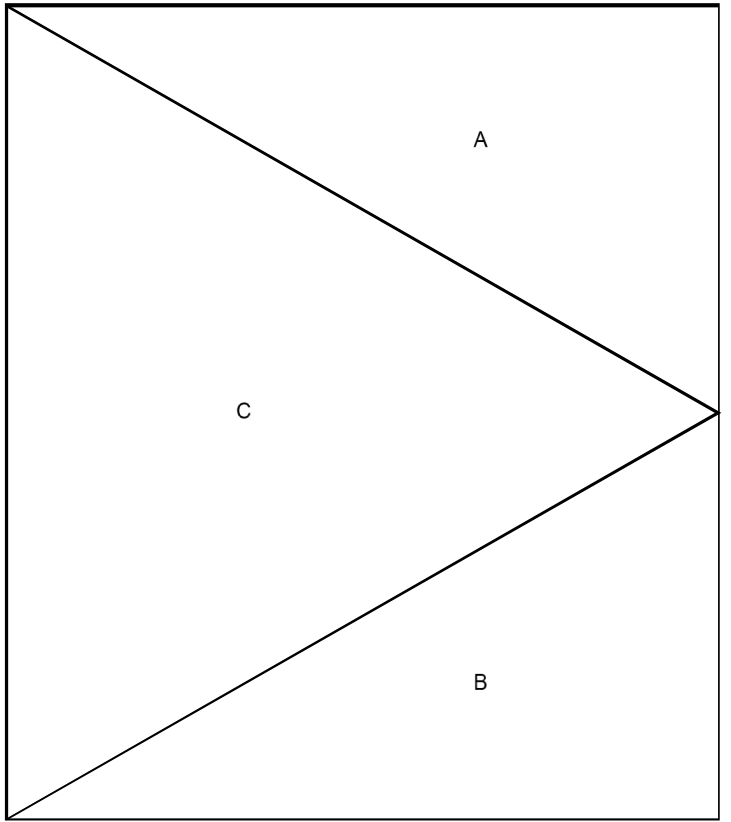
c







A





A diagram showing a triangle with a vertical line extending from its left side. The triangle is oriented with its base on the left and its apex on the right. The vertical line extends downwards from the bottom vertex of the triangle. The letter 'c' is located inside the triangle, near the center.

c