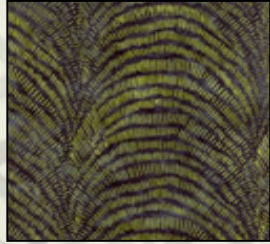


GARDEN TILES

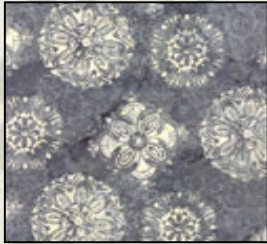
Quilt design by Linda Fitch featuring bestselling *Bali Tiles* in new colors from Hoffman Fabrics

Key Lime Colorway

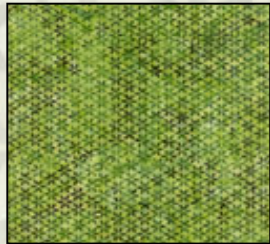
Quilt Size 60" x 71"



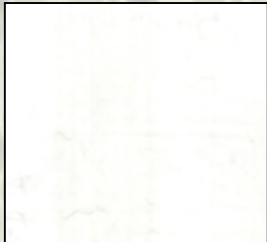
M2749 481-Key Lime



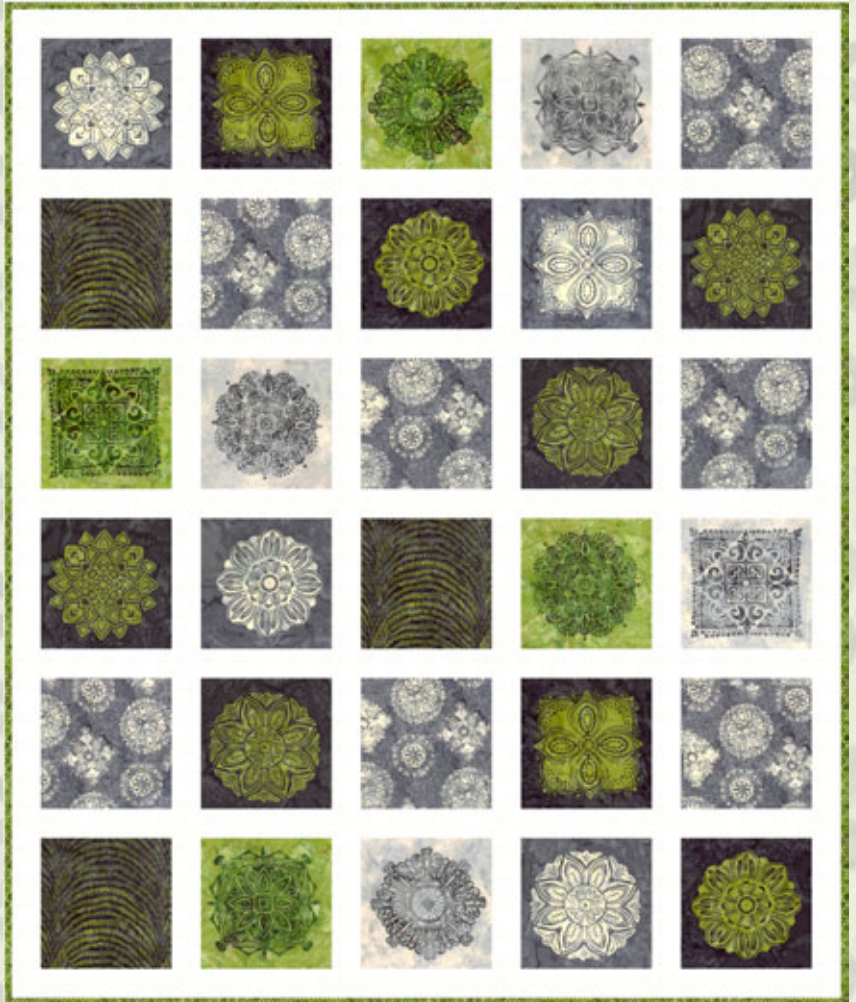
M2742 173-Smoke



M2750 178-Leaf



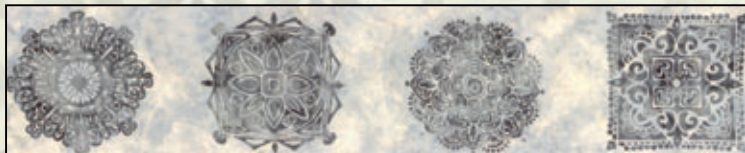
1895 307-Snow



M2743 481-Key Lime



M2743 173-Smoke



M2744 597-December



M2744 178-Leaf

HOFFMAN FABRICS
CALIFORNIA-INTERNATIONAL

Free pattern available from www.HoffmanFabrics.com

"Garden Tiles" featuring fabrics by Hoffman California Fabrics

Quilt Yardage Chart

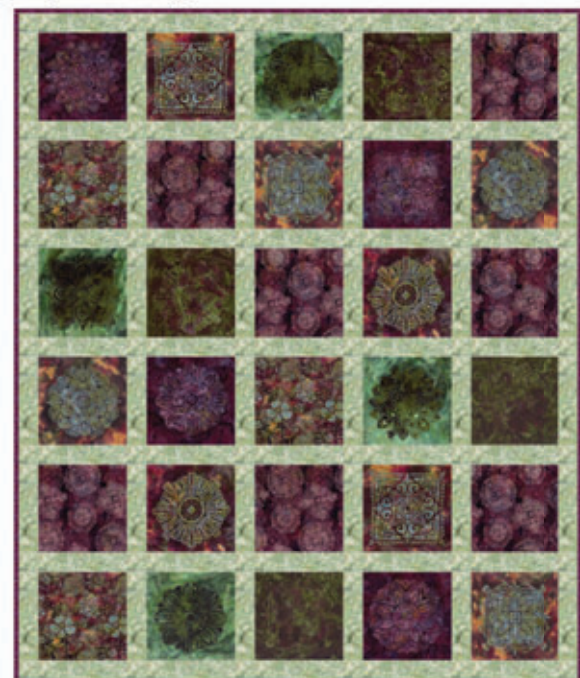
Key Lime Colorway	Purple Colorway	Rum Raisin Colorway	
M2743 481- Key Lime	M2744 255- Borneo	M2744 24-Alabaster	⅔ yard
M2743 173-Smoke	M2743 14-Purple	M2743 68-Indigo	⅓ yard
M2744 597-December	M2743 141-Pine	M2743 515-Rum Raisin	⅓ yard
M2744 178-Leaf	M2744 69-Jungle	M2744 91-Amethyst	⅓ yard
M2742 173-Smoke	M2742 14-Purple	M2742 528-Cinnabar	⅜ yard
M2749 481-Key Lime	M2739 255-Borneo	M2742 24-Alabaster	⅜ yard
1895 307-Snow	1895 227-Sprout	1895 401-Tortilla	1 ⅜ yard
M2750 178-Leaf *	1895 328- Bergen *	1895 524- Moonstruck *	⅝ yard*

Note: These are estimated yardages. Final yardages will be on pattern.

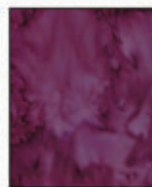
*For binding purposes

BACKING: Coordinate of your choice. 4 ½ yards (1 kit); 54 yards (12 kits)

Purple Colorway



M2739
255-Borneo



1895
328-Bergen



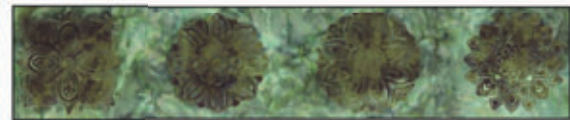
M2742
14-Purple



1895
227-Sprout



M2743 14-Purple



M2743 141-Pine



M2744 69-Jungle



M2744 255-Borneo

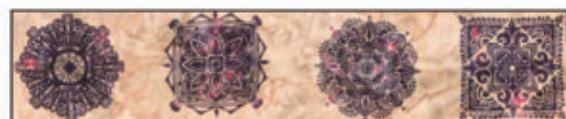
Rum Raisin Colorway



M2743 68-Indigo



M2743 515-Rum Raisin



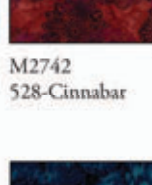
M2744 24-Alabaster



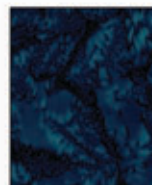
M2744 91-Amethyst



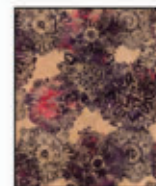
M2742
24-Alabaster



M2742
528-Cinnabar



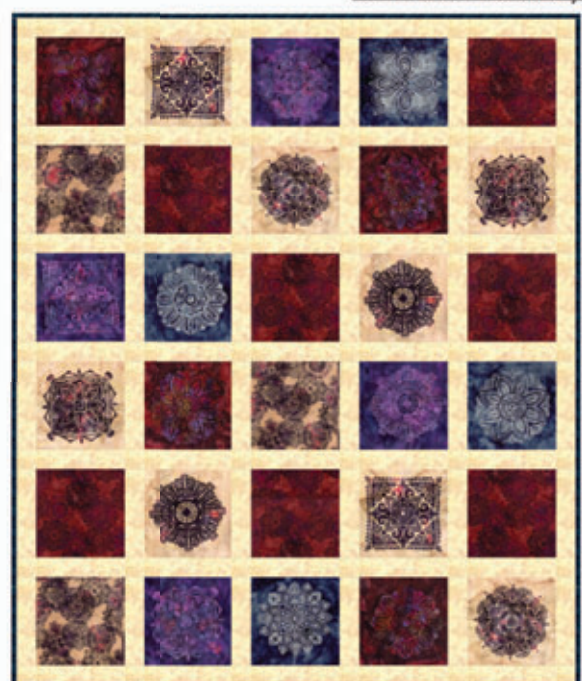
1895
524-Moonstruck



M2742
24-Alabaster



1895
401-Tortilla



View swatches and download quilt patterns at www.hoffmanfabrics.com

GARDEN TILES

Featuring Bali Batik Tiles (Style #'s M2743 and M2744) by Hoffman California Fabrics

Quilt design by Linda Fitch ©2015

Instructions are for a lap-size quilt, approximately 60" x 71" finished.

CUTTING

From the 4 (various colors) Tile fabrics, center and cut (8) Fabric A 10" squares, (4) Fabric B 10" squares. (4) Fabric C 10" squares and (4) Fabric D 10" squares.

Of the 2 coordinating batiks, cut (7) 10" squares of Fabric E and cut (3) 10" squares of Fabric F.

Layout and organize the squares accordingly.

Keeping the rows separated, pick up and stack the squares ending with the farthest left square on top.

From the contrasting fabric (Fabric G), used for sashing and borders, cut (6) 2 ½ " x WOF. Sub-cut into (24) 2 ½ " x 10" pieces for vertical sashing. Cut (13) 2 ½ " x WOF, for horizontal sashing and outside borders.

From Fabric H, cut (7) 2 ½ " x WOF, for binding.

CONSTRUCTION

Take (13) 2 ½ " WOF strips and sew them together, at the short ends to make one long continuous strip. Put aside for now

Take your 5 squares selected for Row 1 and intersperse (4) 2 ½ " x 10" vertical sashing pieces. Continue for rows 2-6.

Once your rows are complete, take one of the rows and fold in half, joining side edges of Square 1 (left side) and Square 5 (right side). Measure from the fold to outside edge and double this measurement. Take the long strip pieced for the horizontal sashing and the borders and cut 5 strips to this measurement.

Sew 5 strips to the bottom of each pieced row. Note there will be no sashing at the bottom of the 6th row.

Now sew all the rows together, including the 6th, at the very bottom.

Once the center of the quilt is pieced, fold the quilt in half, top to bottom. Measure down the middle, from fold to raw edges. Double this amount. From the long 2 ½ " strip, cut 2 pieces to this measurement and attach to the left and right sides of your quilt.

Again fold the quilt in half, but this time with the left to right edges meeting. Measure and double the amount. Cut 2 pieces of this measurement and attach to the top and bottom of your quilt.

Layer top, batting and backing. Quilt as desired. Bind using your favorite method.