

RIDGE ROCK TREES

Quilt design by Linda Fitch featuring fabrics from the Ridge Rock collection, a part of the HOFFMAN SPECTRUM digital-print division



Quilt Size 51" x 66"

Free pattern available from www.HoffmanFabrics.com

HOFFMAN SPECTRUM
DIGITAL PRINT

HOFFMAN FABRICS
CALIFORNIA-INTERNATIONAL

“Ridge Rock Trees” featuring fabrics from the “Ridge Rock” collection a part of the HOFFMAN SPECTRUM digital-print division

Quilt Yardage Chart

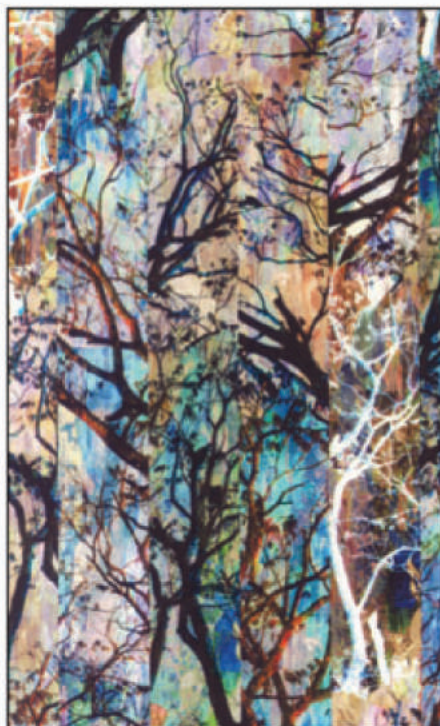
	Style	
A	M4224 553-Rainforest	5/8 yard
B	M4225 553-RainForest	5/8 yard
C	M4226 126-Birch	7/8 yard
D	M4227 553-Rainforest	1/2 yard
E	1895 307-Snow*	2 3/4 yards

*Yardage includes binding.

BACKING: Ridge Rock coordinate of your choice. 4 1/4 yards



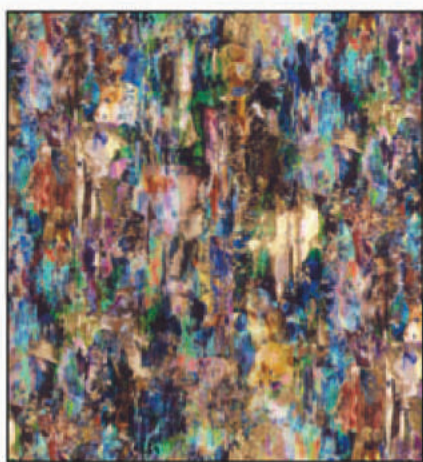
M4224 553-Rainforest



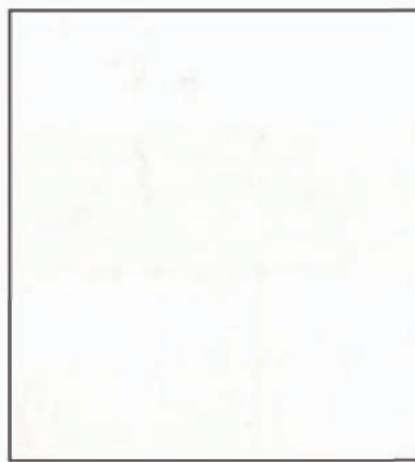
M4225 553-RainForest



M4226 126-Birch



M4227 553-Rainforest



1895 307-Snow

Ridge Rock Trees

51 x 66"

Quilt Design by Linda Fitch featuring fabrics from the Ridge Rock collection, a part of the HOFFMAN SPECTRUM digital-print division.

Advanced quilting skills recommended

As you are cutting, stay organized by grouping cut fabrics by Block, Sashing and Borders.

Cutting

Fabric A, cut (2) WOF strips at 3", sub-cut into (5) 3 x 10 1/2" rectangles, for Block B.

From balance of previous, cut (2) 3 x 5 1/2" rectangles and (2) 3" squares, for Block C.

Cut (1) strip 13" WOF. Sub-cut (3) 2 1/2 x 13" strips (lengthwise-along selvedge), for side borders.

From the remaining width, cut (3) 2 1/2 x 12 1/4" rectangles WOF and (2) 2 1/2" squares, for top and bottom borders.

Fabric B, cut (1) WOF strip at 13". Sub-cut (1) 2 1/2 x 13" rectangle (lengthwise-along selvedge) for side border.

From the balance, trim the 13" to 10 1/2" and cut (17) 1 1/2 x 10 1/2" rectangles (lengthwise), for sashing.

Also, from the previous, cut lengthwise (1) 3 x 10 1/2" and (1) 3 x 5 1/2" rectangle, for Block C.

Cut (1) 3" by WOF (crosswise) strip and sub-cut into (3) 3 x 10 1/2" rectangles, 2 for Block B and 1 for Block C.

Cut (1) 2 1/2 x 12 1/4" rectangle, for top border.

Fabric C, cut (7) 1 3/4" strips WOF, sub-cut using Templates A and B. Always cut with right side of fabric facing you. Do not cut folded. Cut (28) long branches/leaves and (17) short branches/leaves (using templates), from 6 of the 7 strips. You should be able to fit (5) long and (1) short branches out of one width, if you flip the template. The seventh strip is to cut the remaining short branches needed. This is for Block A.

Cut (1) strip 3" WOF and sub-cut into (2) 3 x 10 1/2" rectangles, for Block B.

From the remaining fabric of the previous, cut (1) 3 x 8", (1) 3 x 5 1/2" rectangles and (1) 3 x 3" square, for Block C.

For the outside borders cut (1) 13" strip WOF. Sub-cut (2) 2 1/2 x 13" rectangles (lengthwise along selvedge). From the remaining width, cut (2) 2 1/2 x 12 1/4" rectangles WOF.

Fabric D Cut (1) strip at 13" WOF. Sub-cut (2) 2 1/2 x 13" rectangles lengthwise along the selvedge, for side borders.

From the balance, cut the following WOF, (1) 2 1/2 x 12 1/4" for the bottom border. (1) 2 1/2" square for top left corner (border), (1) 3 x 10 1/2" for Block B and (1) 3 x 10 1/2" and (1) 3 x 5 1/2" for Block C.

Fabric E Cut (16) 1 3/4" WOF strips. Using Template B, sub-cut (52) long leaves and using Template A, cut (63) short. This is for Block A background.

Cut (5) 3" WOF strips and sub-cut into (18) 3 x 10 1/2" rectangles, for Block B.

Cut (3) 3" WOF strips and sub-cut into (7) 3 x 8", (3) 3 x 5 1/2", (1) 3 x 10 1/2" rectangles and (15) 3" squares. This is for Block C.

Cut (1) strip 10 1/2" WOF. Sub-cut into (3) 10 1/2" squares, for solid blocks.

For sashing, cut (4) WOF strips at 1 1/2". Sub-cut into (13) 1 1/2 x 10 1/2" rectangles.

For inner border, cut (6) WOF 1 1/2" strips. Join at short ends and put aside for now.

For outer border, cut (1) WOF strip at 2 1/2". Sub-cut into (1) 2 1/2 x 12 1/4", (2) 2 1/2 x 13" rectangles and (1) 2 1/2" square.

For binding, cut (6) WOF strips at 2 1/4"

Quilt Construction

Being that each block is unique and different, it is much easier to refer to the photo and diagram for fabric, color and piece placement.

For Block A you will be joining short and long branches/background at the 45 degree angle. Block A consists of 8 pieced strips. Unfinished block size is a 10 1/2" square. Make 10. Again each block will be different.

Block B consists of 4 pieced strips. Again refer to color photo for fabric placement. Make 7.

Block C is basically a Log Cabin block. Start by sewing the 2 smallest pieces together and adding the next size up to one side (of the previous) and keep expanding till all 7 pieces are used, for one block. Make 4 blocks.

Once you have the blocks constructed, layout according to the photo. Add the appropriate sashing fabrics in between the blocks and on the outer edges as well. Sew blocks into rows.

Sew the rows together. Measure (the length), cut and attach the side inner borders. Measure (the width), cut and attach the top and bottom inner borders.

Piece the outer border pieces as shown. Attach to body of quilt. Quilt as desired and bind.

We hope you enjoy the unexpected use of positive and negative space within this quilt.



Long Branches
for Block A

The diagram shows a large, vertically oriented, elongated shape with a double-line border. The shape is wider at the top and tapers to a point at the bottom. The text "Long Branches for Block A" is centered within the shape.



Short Branches
for Block A

The diagram shows a smaller, vertically oriented, elongated shape with a double-line border. The shape is wider at the top and tapers to a point at the bottom. The text "Short Branches for Block A" is centered within the shape.

