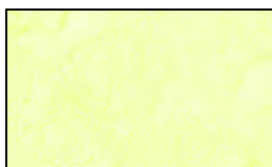


Quilt design by Wendy Sheppard featuring fabrics from the  
“Dream Blossom” collection by Hoffman California Fabrics

Finished Size 54" x 66"



Free pattern available from [hoffmanfabrics.com](http://hoffmanfabrics.com)



1895  
496-Pineapple



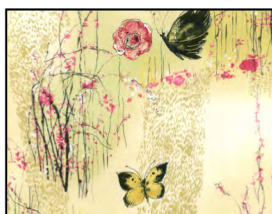
1895  
412-Buttercream



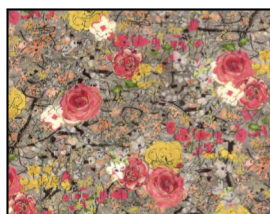
1895  
480-Creamsicle



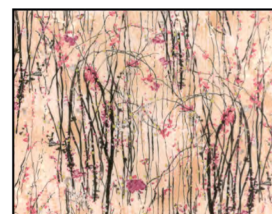
N7500  
151G-Sunset/Gold



N7501  
151G-Sunset/Gold



N7502  
164G-Antique/Gold



N7503  
27G-Peach/Gold

# “Dream Blossom” by Hoffman California Fabrics

Quilt design by Wendy Sheppard

## Quilt Yardage Chart

	Peach Colorway	Blue Colorway	
A	N7502-164G-Antique Gold	N7502-76S-Pewter Silver	$\frac{1}{2}$ yard
B	N7500-151G-Sunset Gold	N7500-581S-Bluegrass Silver	1 $\frac{1}{8}$ yards
C	1895-496-Pineapple	1895-522-Seagrass	$\frac{5}{8}$ yard
D	1895-412-Buttercream	1895-307-Snow	$\frac{5}{8}$ yard
E	1895-480-Creamsicle *	1895-504-Montego *	$\frac{7}{8}$ yard
F	N7503-27G-Peach Gold	N7503-581S-Bluegrass Silver	$\frac{3}{4}$ yard
G	N7501-151G-Sunset Gold	N7501-542S-Dove Silver	$\frac{5}{8}$ yard

\*Yardage includes binding.

BACKING: “Dream Blossom” coordinate of your choice. 4 yards



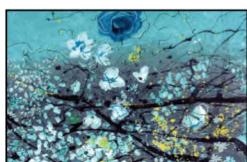
1895  
522-Seagrass



1895  
307-Snow



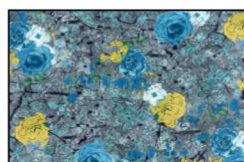
1895  
504-Montego



N7500  
581S-Bluegrass/Silver



N7501  
542S-Dove/Silver



N7502  
76S-Pewter/Silver



N7503  
581S-Bluegrass/Silver



# DREAM BLOSSOM

By Wendy Sheppard

Specification: Confident Beginner / Intermediate

Approximate Finished Block Size: 13" x 17"

Finished Size: 54" x 66"

## Supplies:

Basic sewing supplies and 69" x 72" piece of batting

## Cutting Instructions:

From **Fabric A** *dark floral print*, for pieced blocks, cut (3) 1 1/2" x 42" WOF. Sub-cut (3) 1 1/2" x 13 1/2" and (3) 1 1/2" x 16 1/2" rectangles.

For inner border #3, cut (3) 3 1/2" x 42" WOF. Piece strips and sub-cut (1) 3 1/2" x 50 1/2" and (1) 3 1/2" x 59 1/2" strips.

From **Fabric B** *focal fabric*, for pieced blocks, READ BEFORE CUTTING. Cut (2) 15 1/2" x 42" WOF. Sub-cut (6) 11 1/2" x 15 1/2" rectangles OR extra fabric is allowed for fussy-cutting.

From **Fabric C** *tonal fabric*, for pieced blocks, cut (4) 1 1/2" x 42" WOF. Sub-cut (4) 1 1/2" x 12 1/2" and (4) 1 1/2" x 15 1/2" rectangles.

For sashing squares, (1) 2" x 42" WOF. Sub-cut (4) 2" x 2" squares.

For inner border #2, (6) 1 1/2" x 42". Piece strips and sub-cut (2) 1 1/2" x 47 1/2" and (2) 1 1/2" x 57 1/2" strips.

From **Fabric D** *tonal fabric*, for sashing rectangles, cut (5) 2" x 42" WOF. Sub-cut (6) 2" x 13 1/2" and (6) 2" x 17 1/2" rectangles.

For inner border #1, cut (5) 2" x 42" WOF. Piece strips and sub-cut (2) 2" x 45 1/2" and (2) 2" x 54 1/2" strips.

From **Fabric E** *tonal fabric*, for pieced blocks, cut (5) 1 1/2" x 42" WOF. Sub-cut (5) 1 1/2" x 12 1/2" and (5) 1 1/2" x 15 1/2" rectangles.

For inner border #4, cut (3) 1 1/2" x 42" WOF. Piece strips and sub-cut (1) 1 1/2" x 51 1/2" and (1) 1 1/2" x 62 1/2" strips.

Cut (6) strips 2 1/4" x 42" WOF. Piece strips to make a continuous binding strip.

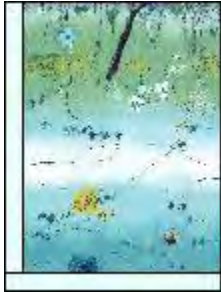
From **Fabric F** *branch print*, for pieced blocks, cut (5) 1 1/2" x 42" WOF. Sub-cut (6) 1 1/2" x 13 1/2" and (6) 1 1/2" x 16 1/2" rectangles.

For outer border, cut (4) 3 1/2" x 42" WOF. Piece strips and sub-cut (1) 3 1/2" x 54 1/2" and (1) 3 1/2" x 63 1/2" strips.

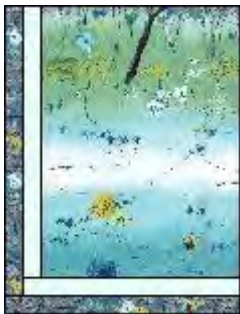
From **Fabric G** *butterfly print*, for pieced blocks, cut (1) 15 1/2" x 42" WOF. Sub-cut (3) 11 1/2" x 15 1/2" rectangles. A little extra fabric is added for fussy-cutting.

**Block Assembly (using top left block as example)**

1. Sew (1) 1 1/2" x 15 1/2" **Fabric E** tonal rectangle to the left of (1) 11 1/2" x 15 1/2" **Fabric B** rectangle.  
Add (1) 1 1/2" x 12 1/2" **Fabric E** tonal rectangle to the bottom of **Fabric B** rectangle.

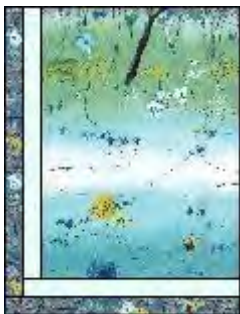


2. Add (1) 1 1/2" x 16 1/2" **Fabric A** rectangle to the left of sewn unit made in step 1, and (1) 1 1/2" x 13 1/2" **Fabric A** rectangle to the bottom of sewn unit to complete 1 block.



3. Repeat to make a total number of blocks in the following colorways:

3 blocks



2 blocks



1 block

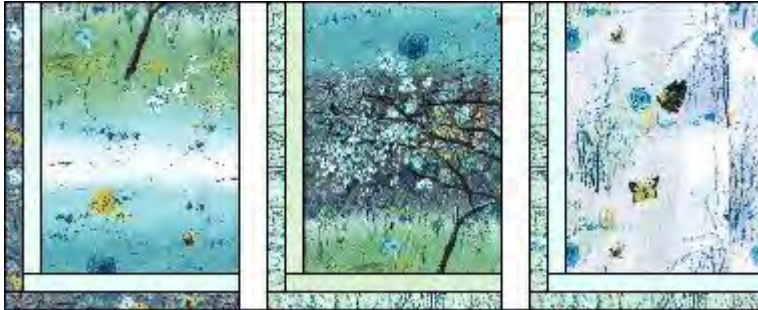


### Quilt Center Assembly:

#### 1. Pieced Rows.

Sew 3 pieced blocks and (2) 2" x 17 1/2" **Fabric D** tonal sashing rectangles into rows.

Row1



Row 2

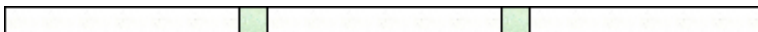


Row 3

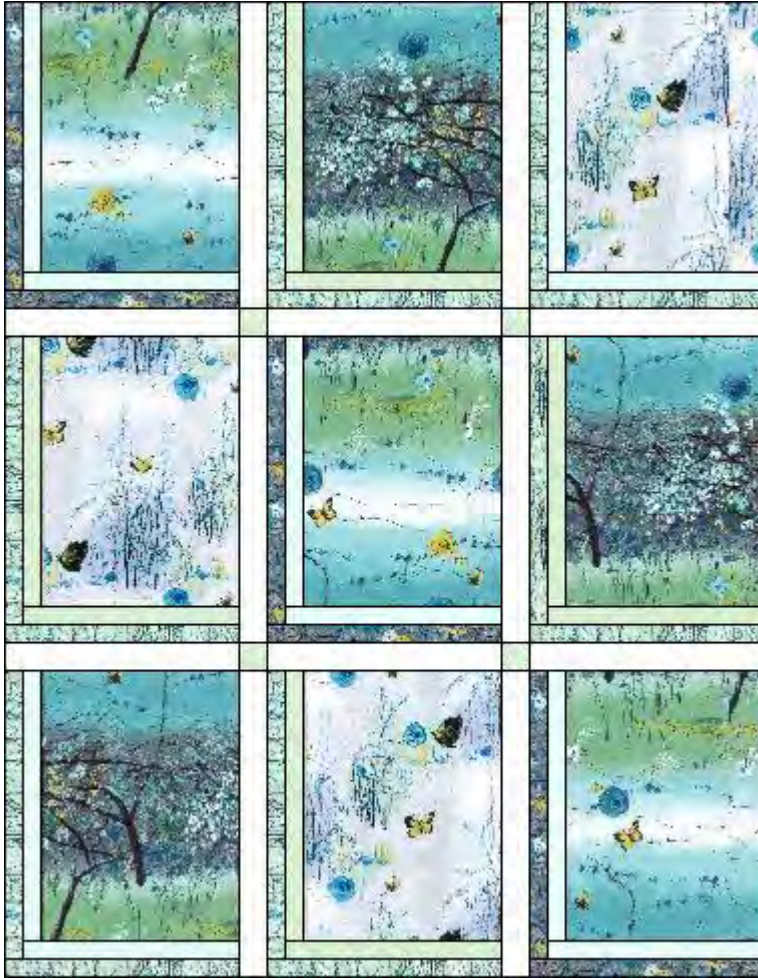


#### 2. Pieced sashing rows.

Arrange and sew (3) 2" x 13 1/2" **Fabric D** tonal sashing rectangles and (2) 2" x 2" **Fabric D** tonal sashing squares into a row. Make a total of 2 rows.



3. Sew pieced and sashing rows together to complete quilt center.



### Quilt Top Assembly

1. Inner border #1. Sew (2) 2" x 54 1/2" **Fabric D** tonal strips to the opposite long sides of quilt center. Sew (2) 2" x 45 1/2" **Fabric D** tonal strips to the remaining opposite short sides of quilt center.

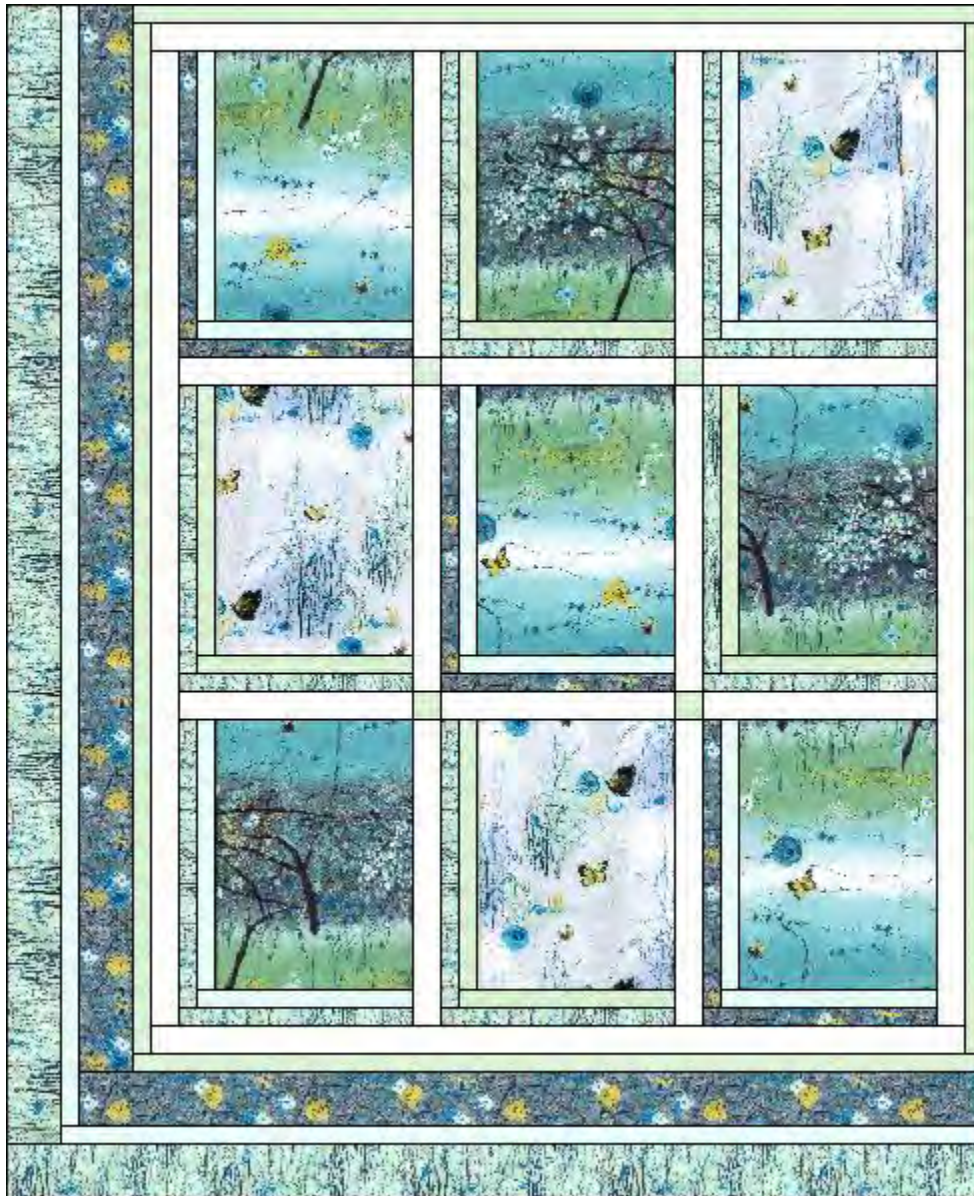
2. Inner border #2. Sew (2) 1 1/2" x 57 1/2" **Fabric C** tonal strips to the opposite long sides of quilt center. Sew (2) 1 1/2" x 47 1/2" **Fabric C** tonal strips to the remaining opposite short sides of quilt center.





3. Inner border #3. Sew (1) 3 1/2" x 59 1/2" **Fabric A** strip to left side of quilt center. Add (1) 3 1/2" x 50 1/2" **Fabric A** strip to the bottom of quilt center.
4. Inner border #4. Sew (1) 1 1/2" x 62 1/2" **Fabric E** tonal strip to the left side of quilt center. Add (1) 1 1/2" x 51 1/2" **Fabric E** tonal strip to the bottom of quilt center.
5. Outer border. Sew (1) 3 1/2" x 63 1/2" **Fabric F** strip to the left side of quilt center. Sew (1) 3 1/2" x 54 1/2" **Fabric F** strip to the bottom of quilt center to complete quilt top.





Quilting Instructions:

1. With the backing fabric laying taut, place batting and then quilt top to form quilt sandwich. Baste sandwich.
2. Quilt as desired.
3. Bind to finish quilt.