



BEGINNER | 1 DAY CLASS

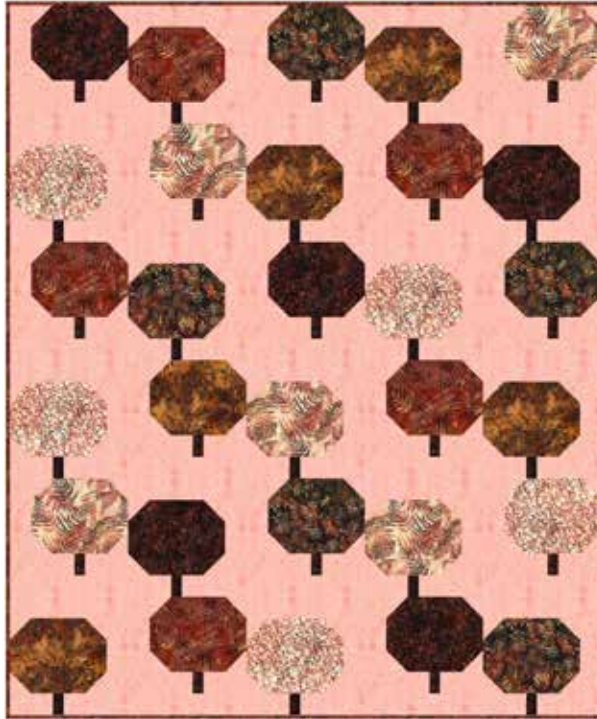
ENCHANTED FOREST & FALL WINDMILLS

Finished Enchanted Forest: 55" x 66"
Finished Fall Windmills: 48" x 60"

Quilt designs by Villa Rosa Designs, featuring Hoffman Bali Batiks, the Fall Into You collection.

Warm, natural tones add natural beauty into the home!

Villa Rosa Designs



Enchanted Forest (EF):
55" x 66"



Fall Windmills (FW): 48" x 60"

ENCHANTED FOREST

FALL WINDMILLS

Y2667 533-Nightshade

Y2669 100-Adobe

Y2669 714-Fall

Y2670 100-Adobe

Y2673 116-Harvest

Y2673 432-Dijon

Y2675 714-Fall

885 372-Saddle

844 160-Spice

1895 137-Pearl

1895 480-Creamsicle

FABRICS	EF 1 kit	FW 1 kit	FABRICS	EF 1 kit	FW 1 kit
Y2667 533-Nightshade	1/3 Yard	5/8 Yard	Y2675 714-Fall	1/3 Yard	—
Y2669 100-Adobe	1/3 Yard	5/8 Yard	844 160-Spice	1/8 Yard	—
Y2669 714-Fall	1/3 Yard	1/2 Yard	885 372-Saddle	—	1/2 Yard*
Y2670 100-Adobe	5/8 Yard*	1/2 Yard	1895 137-Pearl	—	1 1/2 Yds.
Y2673 116-Harvest	1/3 Yard	1/2 Yard	1895 480-Creamsicle	2 1/4 Yds.	—
Y2673 432-Dijon	1/3 Yard	1/2 Yard			

* binding

PURCHASE PATTERNS
VillaRosaDesigns.com