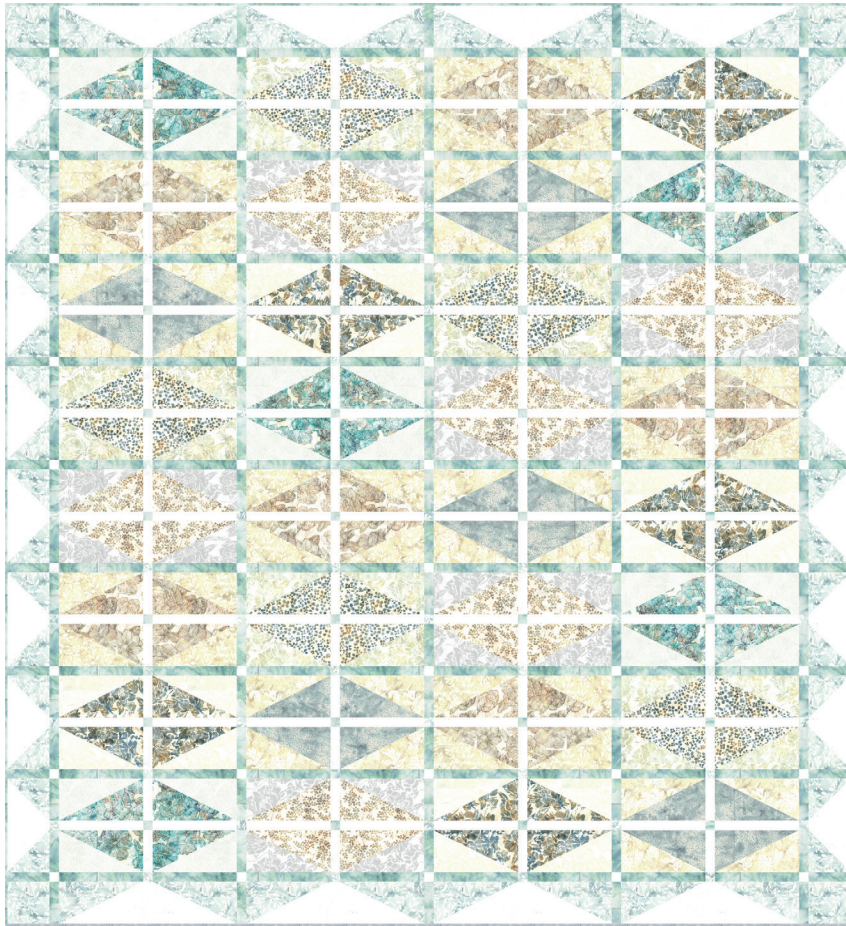


GARDEN PARTY

Finished Quilt: 90" x 98"

Quilt design by Sheila Christensen, featuring Hoffman Bali Batiks, the Sandy collection.

This quilt is Sheila's favourite for taking with her when she goes on adventures in her vintage caravan. It's so easy to make and if you have a strip cutting ruler it will come into its own when cutting the sashings and cornerstones.



X2615 531-Papyrus

X2616 294-Sandpiper

X2617 307-Snow

X2617 531-Papyrus

X2619 84-Wheat

X2619 265-Oyster

X2620 294-Sandpiper

X2620 353-Teddy

X2620 521-Mist

X2621 84-Wheat

X2621 265-Oyster

X2621 621-Arctic Blue

X2622 521-Mist

885 288-Clouds

1384 174-Seamist

FABRICS	1 KIT	10 KITS	FABRICS	1 KIT	10 KITS
X2615 531-Papyrus	3/4 Yard	1 Bolt	X2620 521-Mist	3/4 Yard	1 Bolt
X2616 294-Sandpiper	3/4 Yard	1 Bolt	X2621 84-Wheat	3/4 Yard	1 Bolt
X2617 307-Snow	3/4 Yard	1 Bolt	X2621 265-Oyster	3/4 Yard	1 Bolt
X2617 531-Papyrus	3/4 Yard	1 Bolt	X2621 621-Arctic Blue	3/4 Yard	1 Bolt
X2619 84-Wheat	3/4 Yard	1 Bolt	X2622 521-Mist	3/4 Yard	1 Bolt
X2619 265-Oyster	2 3/4 Yards	2 Bolts	885 288-Clouds	3/4 Yard	1 Bolt
X2620 294-Sandpiper	3/4 Yard	1 Bolt	1384 174-Seamist	2 1/2 Yards*	2 Bolts
X2620 353-Teddy	3/4 Yard	1 Bolt			

* includes binding

PURCHASE PATTERN

QuiltWithSheila.com
CheckerDist.com