

Hoffman

CALIFORNIA-INTERNATIONAL FABRICS

UMBRELLA

Quilt design by Vicki Stratton of Quilting-Time Designs featuring fabrics from the "H2O" collection by Hoffman California International Fabrics



Finished Size 34" x 42 1/2"

Free pattern available at
hoffmanfabrics.com



Made To Inspire

"UMBRELLA"

Featuring fabrics by Hoffman California Fabrics

Quilt Yardage Chart

FABRICS	
1895 - 150 - Frost	1 yard
1895 - 305 - Gravel	1/8 yard
N7800 - 113 - Frost	1 yard
N7800 - 55 - Charcoal	1/4 yard
N7800 - 12 - Pink	1/8 yard
N7800 - 223 - Orchid	1/8 yard
N7800 - 73 - Ocean	1/8 yard
N7800 - 481 - Key Lime	1/8 yard
N7800 - 301 - Bluebird	1/8 yard
N7800 - 258 - Cerulean	1/8 yard
N7700 - 302 - Stone	3/8 yard
N7700 - 258 - Cerulean (Binding)	3/8 yard
Backing	1 1/4 yard
Steam a Seam 2	12" x 36"

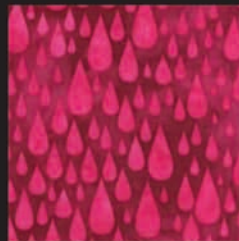
BACKING: Coordinate of your choice. 1 1/4 yards



N7800 - 113 - Frost



1895 - 113 - Frost



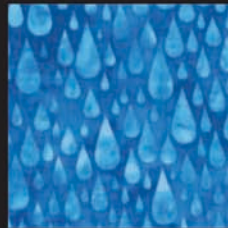
N7800 - 12 - Pink



N7800 - 301 - Bluebird



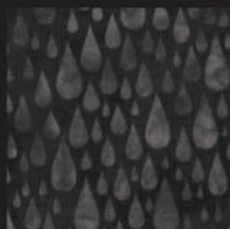
N7800 - 223 - Orchid



N7800 - 73 - Ocean



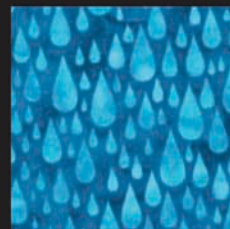
N7800 - 481 - Key Lime



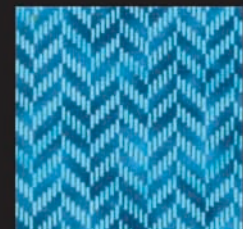
N7800 - 55 - Charcoal



N7700 - 302 - Stone



N7800 - 258 - Cerulean



N7700 - 258 - Cerulean

View swatches and download quilt patterns at hoffmanfabrics.com

Umbrella Quilt

Quilt design by Vicki Stratton

Instructions by Linda Ambrosini

Featuring screenprinted fabrics from the H2O and Zig & Zag collections, and hand-dyed Style 1895 Hoffman Bali Watercolors

Here in Southern California we are in our 4th year of drought. I think "rain" is on our brains! This cute rainy day quilt is set on point which gives it a charming look, but is a bit of a challenge when using directional fabrics. This challenge does not make the quilt any harder to sew, but we must always be checking that the direction of the raindrops is consistent. Yes, the rain must fall down. The quilt model has the rain falling down from right to left on all the **H2O** fabrics. Just keep checking yourself to the quilt picture and you will be fine.

Cutting Instructions:

1895 Frost Cut 3 – 6 ½" X WOF strips. Sub cut into 12 - 6 ½" squares and 4 -3 ½ x 6 ½" rectangles.

From the remaining 6 ½" strip cut 2 – 5 1/8" squares. Cut this in half, once diagonally. These are for the corners.

Cut 1 - 5 ½" x WOF strip. Sub cut into 7 – 5 ½" squares. Cut these in half, twice diagonally. These are for the setting triangles

N7800 Frost Cut 2 – 6 ½" x WOF strips. Sub cut into 6 – 6 ½" squares and 2 – 3 ½ x 6 ½ rectangles (rain landing on the 3 ½ side, same direction as next step)

Cut 4 – 3 ½" x WOF strips, Sub cut into 12 - 3 ½ x 6 ½ rectangles and 14 – 3 ½" squares.

For each of the 6 color **H2O** fabrics, you have a 1/8th of a yard. Cut this piece in half. Save one piece which will measure approximately 4 ½ by 21 inches for creating the appliquéd raindrops and cut the other half into a 3 ½ by 21" strip. Cut this strip into 3 ½" squares. You will need 3 squares of each color.

Quilt Construction:

The center of this quilt is achieved by simply alternating 6 ½ inch squares set on-point with the raindrops falling down, right to left.

There are only 3 different blocks to sew.

The first are the blocks that give us the color diamond border. Each of the blocks consist of 1 color **H2O** 3 ½" square, 1 Frost **H2O** (raindrop) 3 ½" square, and 1 Frost **H2O** (raindrop) 3 ½ x 6 ½ inch rectangle...the ones cut from the 3 1/2" strips. Please refer to the quilt photo as each block varies as to color and orientation of the raindrops.

I actually laid out the center 6 ½" squares on my design wall and made each of the color diamond blocks individually to insure all my rain was falling in the correct direction, believe me this really helps! Make 10 blocks.

Next let's sew the corner blocks. We will make a flying geese unit from a solid 1895 Frost 3 ½ x 6 ½" rectangle and 2 colors of **H2O** squares. Again, refer to the quilt photo for the correct colors. The color squares are "snowballed" onto the grey rectangle. Test flip the color H2O rectangle before drawing your diagonal line and sewing to insure the raindrops are falling in the correct direction. Cut away the excess fabric and press. Join each flying geese unit to a 3 ½ x 6 ½" Frost **H2O** rectangle, again note orientation. The top left and bottom right Frost raindrops will have the rain drops falling lengthwise (cut from the 6 ½" strip) and the top right and bottom left will be the ones cut from the 3 ½" strip. This sounds extremely confusing, but makes perfect sense on your design wall. Make 4 blocks.

The last blocks to be constructed are the setting triangles. Each setting triangle consists of one Frost **H2O** raindrop 3 ½" square and 2 small 1895 Frost triangles. Again, the orientation of the raindrop fabric will change depending on which side it is to be sewn on. Use you design wall. Make 14 blocks.

Now all your blocks are constructed and laid out on a design wall. The quilt is sewn in diagonal rows. Join the rows and finally add the corners. When adding the corners, center the large 1895 Frost triangles over the flying geese blocks. If there is any extra fabric, just trim the corners after sewing to square up the quilt.

Appliqué:

Use your favorite appliqué technique. For me this quilt will be used as a baby quilt, so I used a method that would be extremely durable.

Since we have been very concerned about our fabric direction so far let's keep it up. The umbrella pattern gives a fabric direction....YES, keep the raindrops and the Zig & Zag pattern going in the same direction as the rest of the quilt....why not?

Quilt, bind and enjoy!

Let's hope for some rainy days!!



A

Cut 2

straight of grain

Align inside curved edge of piece A over left curved edge of piece B. Sew curved seam. Repeat process on the other side to form the umbrella. Press. Place this over paper backed fusible web and cut fusible into umbrella shape. Remove paper and fuse to backside of umbrella.

When the blocks of the quilt top have been sewn, arrange umbrella and handle, tuck handle under umbrella. Fuse to quilt. Stitch around with straight stitch or blanket stitch.

Trace rain drop templates and handle template onto fusible web. Loosely cut out. Remove paper from the side that doesn't have your tracing on it. Fuse to backside of selected fabrics. Cut out on lines. Remove paper from fusible. Arrange and fuse to background fabric.

