

## HINTS OF SPRING

featuring Yuki and Treeline Drive screenprints, plus Hoffman Bali Batiks

DESIGNED, PIECED AND QUILTED BY VALERIE SHIELDS



Finished Size: 44 ½" x 44 ½"

### Skill Level: Beginner

Please read all directions prior to purchasing and cutting fabric. The design element for the strips gives you freedom to choose the number of fabrics you want. Thus, the amounts you purchase may vary.

## SUPPLIES

- Sewing Machine and Iron
- Thread; cotton piecing thread and also cotton quilting thread to match fabric.
- Cutting mat, rotary cutter and quilting rulers.
- Glass Head fine pins
- White non-permanent marking pencil
- Design Wall
- Spray baste

## MATERIALS

- ½ yard at least of a large scale or pictorial print. You may want to purchase more if you fussy cut the fabric. I used Hoffman Fabrics screen print **Yuki S#M7433 Frost Silver**.
- 1/8 yard of a minimum of 10 different fabrics. I used 6 of Hoffman's 1895 Watercolors; Blacklight, December, Coconut, Pistachio, Breakers and Snow. I also used S#L7360 Snow/Silver, M2736 Frost, **Treeline Drive S#M7472 Eucalyptus Silver** and **Yuki S#M7434 Mauve Silver**.
- 5/8 yard dark blue for corner triangles. I used Hoffman **Yuki S#M7436 Navy Silver**.
- 1/8 yard dark blue for inner border. I used Hoffman **Yuki S#M7437 Navy Silver**.
- 5/8 yard dark blue/gray for outer border. I used Hoffman 1895 December.
- 3/8 yard for binding on straight of grain or ½ yard for binding on the bias. I used Hoffman 1895 December. Same as my outer border.
- Backing and sleeve fabric
- Cotton batting 80/20.
- Threads to match fabrics



## CUTTING

### From the Large Scale or Pictorial Print:

- Cut (3) strips 5 ½" x 42" (width of fabric).
- Sub-cut (16) 5 ½" x 5 ½" squares from the strips.

Place these squares on your design wall in a balanced and pleasing way leaving space for your strips to be placed next to them.

**From the 10 various fabrics:**

- Cut at least one strip 2 ½" x 42" (width of fabric) from each fabric.
- Cut (16) 2 ½" x 5 ½" \*
- Cut (32) 2 ½" x 7 ½" \*
- Cut (16) 2 ½" x 9 ½" \*

\*I would advise placing the strips on your design wall as you cut them. The strips are placed up in a Log Cabin fashion. I placed them where I thought they looked best. Each block has (1) 5 ½", (2) 7 ½" and (1) 9 ½" strip. Be sure you create a nice balance of color allowing your eye to travel. You may decide to use more of one color than another and that is why I advise placing them on your wall while cutting. You may find you need more than one strip of a color. Play with the design and have fun with it.



**From the dark blue for the block triangles:**

- Cut (4) strips 4 ½" x 42" (width of fabric)
- Sub-cut into (32) 4 ½" x 4 ½" squares.



**From the dark blue for the Inner Border:**

- Cut (4) strips 1" x 42" (width of fabric)
- Sub-cut 2 of the strips 1" x 36 ½"
- Sub-cut 2 of the strips 1" x 37 ½"



**From dark blue/gray fabric for the Outer Border:**

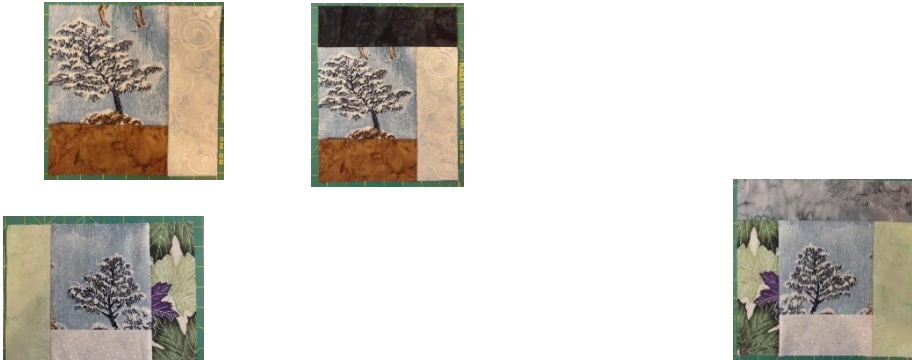
- Cut (4) strips 4" x 42" (width of fabric)
- Sub-cut 2 of the strips 4" x 37 ½". Save the small leftover to add to the remaining 2 strips so that you can make 2 strips 4" x 44 ½".



**BLOCKS** \*Use a ¼" seam allowance unless noted differently. Before you start removing your pieces from your design wall to sew...TAKE A PICTURE. It is so easy to mix it up as you go. I recommend just taking one down at a time.

As mentioned in the cutting directions, this is put together like a log cabin. Sew your 5 ½" strip to your 5 ½" square. Then sew a 7 ½", your other 7 ½" and then your 9 ½". I recommend pinning the pieces down with a minimum of 3 pins. This helps with accuracy and keeps the blocks square. You shouldn't have to do any trimming or resizing if you pin.

1. **ALL SEAMS ARE PRESSED TOWARD THE CENTER SQUARE.** This is very important for the overall look of the piece. You want the squares to pop out and the strips to appear as the background. Don't worry about bulky seams. I had no trouble with it. Press as you go. You should have a 9 ½" square.



2. Take your blue 4 ½" squares and draw a line diagonally on the wrong side using a white non-permanent marking pencil. Look at the cover photo for placement. Taking one block down at a time, align the square right sides together on the corner. Use your nail or fingertip to feel that the diagonal line is just kissing the point of the center square. Pin in place and sew directly on the line. Each block will have two triangles on opposite corners. See cover photo for positioning. Gently press outward making sure you have a nice point on the center square. Open back up, place ruler along sewn line creating a ¼" seam allowance and trim.



These corner triangles are very important because I think they allow the center square to pop even more and become the focal point.





## ASSEMBLY

1. Sew the blocks together in rows. If seams for row one are pressed to the right, then press seams in row two to the left. That way when you sew the rows together the seams between each block will nestle together. Pinning is essential to make sure the triangles are aligned properly. Their seams will be going the same direction. Match them the best you can using your pins. Some of your seams from the strips may match up and need to be pinned. They may or may not nestle. Press seams for each row in the same direction; I usually press the downward which makes it easier for me when spray basting.



2. After all four rows are sewn together then sew the inner border. This is the 1" blue strip. Sew one strip 1" x 36 1/2" to the right side and one to the left. Press outward toward the strip. Sew the other two strips 1" x 37 1/2" to the top and bottom. Press outward toward the strip.

3. Outer Border. Follow same instruction as inner border using your 4 inch wide dark blue/gray strips. Attach side pieces first 4" x 37 1/2" and then top and bottom 4" x 44 1/2". **PRESS TOWARD THE INNER STRIP.** Both seams will be under that inner strip and it causes that strip to pop out.



4. Make an appropriate size backing and cut the appropriate size batting; 44 1/2" x 44 1/2".
5. Spray baste the three layers together making sure the seams are laying properly.
6. Bind and quilt. (I used a 3/8" binding matching my outer border fabric.) I usually bind my quilts before I do the quilting. It encloses the piece nicely and prevents any shifting or distortion of the piece during the quilting.

**Hints of Spring** – 44 1/2" X 44 1/2"

**©2015 VALERIE SHIELDS**