



INTERMEDIATE | 1 DAY CLASS

# MARBLED CHAINS & A TRUE CLASSIC

Finished Marbled Chains Quilt: 66" x 66"  
Finished A True Classic Quilt: 55" x 59"

Quilt designs by Windmill Quilts and The Whimsical Workshop, featuring Marbled, a Hoffman Spectrum Digital Print collection.

Beautiful contrast and precise angles. This quilt makes our Marbled fabric shine!

## MARBLED CHAINS

## A TRUE CLASSIC



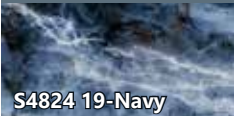
S4808 55-Charcoal



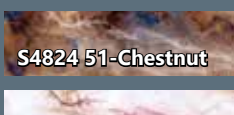
S4808 33-Cream



S4808 58-Earth



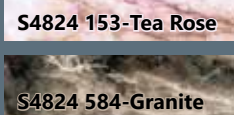
S4824 19-Navy



S4824 19-Navy



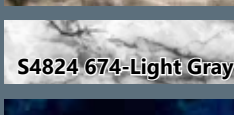
S4824 173-Smoke



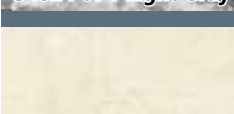
S4824 51-Chestnut



S4824 153-Tea Rose



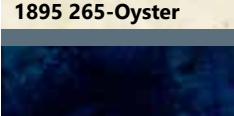
S4824 584-Granite



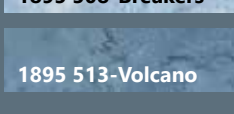
S4824 674-Light Gray



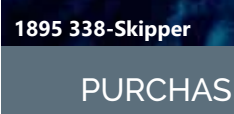
S4824 674-Light Gray



1895 265-Oyster



1895 338-Skipper



1895 338-Skipper



1895 513-Volcano

## PURCHASE PATTERN

[WindmillQuilts.net](http://WindmillQuilts.net)  
[TheWhimsicalWorkshop.com](http://TheWhimsicalWorkshop.com)



Marbled Chains: 66" x 66"  
by Windmill Quilts



A True Classic: 55" x 59"  
by The Whimsical Workshop

MARBLED CHAINS FABRICS	1 KIT	12 KITS
S4808 55-Charcoal	1/2 Yard*	1 Bolt
S4824 19-Navy	3 1/4 Yds.	3 Bolts
S4824 173-Smoke	1/8 Yard	1 Bolt
S4824 674-Light Gray	3/8 Yard	1 Bolt
1895 265-Oyster	1 5/8 Yds.	2 Bolts
1895 338-Skipper	2 1/8 Yds.	2 Bolts

\* binding

A TRUE CLASSIC FABRICS	1 KIT	12 KITS
S4808 33-Cream	1/2 Yard	1 Bolt
S4808 58-Earth	1/2 Yard	1 Bolt
S4824 19-Navy	5/8 Yard	1 Bolt
S4824 51-Chestnut	1/3 Yard	1 Bolt
S4824 153-Tea Rose	1 1/8 Yds.	1 Bolt
S4824 584-Granite	1/2 Yard	1 Bolt
S4824 674-Light Gray	1/2 Yard	1 Bolt
1895 338-Skipper	1/2 Yard*	1 Bolt
1895 508-Breakers	1 1/4 Yds.	1 Bolt
1895 513-Volcano	3/4 Yard	1 Bolt

\* binding