



CONFIDENT BEGINNER | 1 DAY CLASS

MID CENTURY MODERN KITCH

Finished Quilt: 30" x 40 1/2"

Quilt design by Linda Ambrosini, featuring Retro Vibe Bark Cloths and Indah Batiks and Solids. A "pear" of fabrics got together and made the coolest quilt ever. Easy applique and only 4 blocks makes this perfect beginner class. Using our bark cloth makes for even more texture.



Q5001 200-Blue Hawaiian

Q5002 142-Pistachio

Q5003 D7-Dusty Blue

Q5003 20-Natural

114 54-Rosewood

122 98-Moss

116 134-Parchment

140 534-Hemp

100 486-Pretzel

100 630-Ballet Pink

128 136-Peacock

131 476-Juniper

FABRICS	1 KIT
Q5001 200-Blue Hawaiian	1 Fat Quarter
Q5002 142-Pistachio	1 Fat Quarter
Q5003 D7-Dusty Blue	1 Fat Eighth
Q5003 20-Natural	1 Fat Eighth
100 486-Pretzel	1 Fat Eighth
100 630-Ballet Pink	1 Fat Eighth

FABRICS	1 KIT
114 54-Rosewood	1 Fat Quarter
116 134-Parchment	1 Fat Quarter
122 98-Moss	1 Fat Eighth
128 136-Peacock	1 Fat Eighth
131 476-Juniper	3/8 Yard*
140 534-Hemp	1 Fat Quarter

*binding

FREE PATTERN DOWNLOAD
hoffmanfabrics.com

Mid Century Modern Kitch

Finished Size 30 x 41½ inches

By Linda Ambrosini

This bright modern quilt belongs in everyone's kitchen. Four large appliqué blocks are sewn together to create a quick whimsical work of art. Use your favorite appliqué method whether it is fusible, machine or hand appliqué. The pattern figures are reversed images. ¼" seam allowances are added only where indicated on the templates.

When printing copies of the pear figures, print at 100% scale. Note the 1 inch scale on each page.

Fabric Requirements and Cutting:

Background fabrics: 4 fabrics, 1 Fat Quarter of each, cut each to 15 ½ by 21.

Q5001	Blue Hawaiian
Q5002	Pistachio
Indah 114	Rosewood
Indah 140	Hemp

Pear prints: 4 fabrics, 1 Fat Eighth of each, cut a left facing pear, (this will be a reverse of the pattern) and a leaf top from each fabric. Play with figure placement.

Q5003	Dusty Blue
Q5003	Natural
Indah 128	Peacock
Indah 100	Ballet Pink

Pear flesh: 1 fabric, 1 Fat Quarter, cut 4 right facing pears.

Indah 116	Parchment
-----------	-----------

Pear core, stem and leaf bottom: 1 fabric, 1 Fat Eighth, cut 4 each of core, stem and leaf bottom.

Indah 100	Pretzel
-----------	---------

Pear seeds: 1 fabric, 1 Fat Eighth, cut 12 seeds

Indah 122	Moss
-----------	------

Binding: 1 fabric, 3/8 yard, cut 4 strips by WOF at 2 ¼ inches for binding.

Indah 131	Juniper
-----------	---------

Some helpful hints when appliquéing.

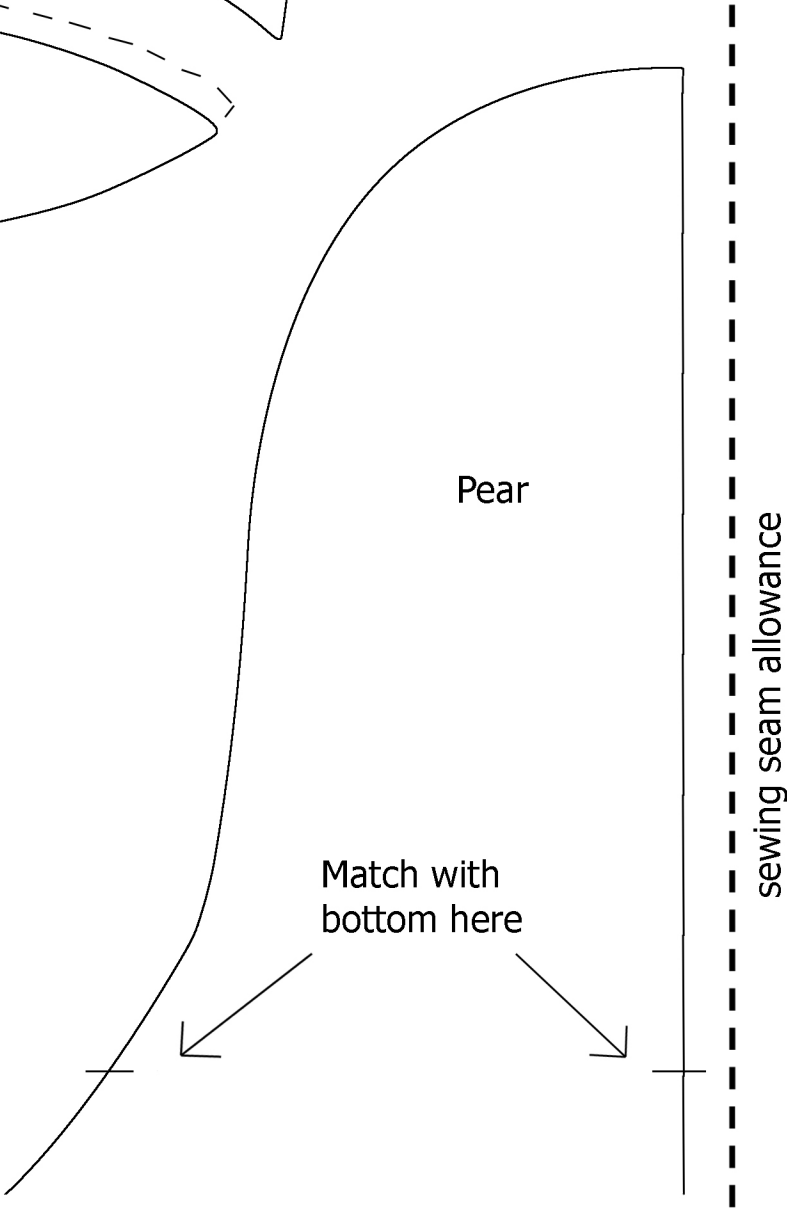
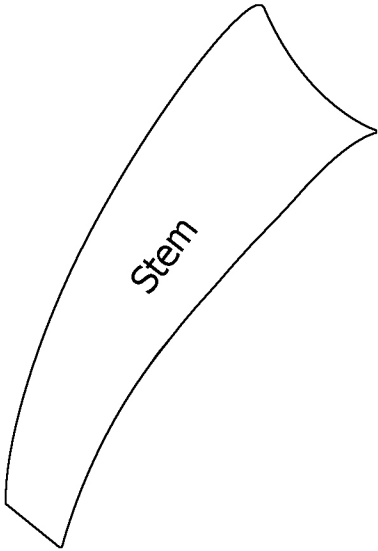
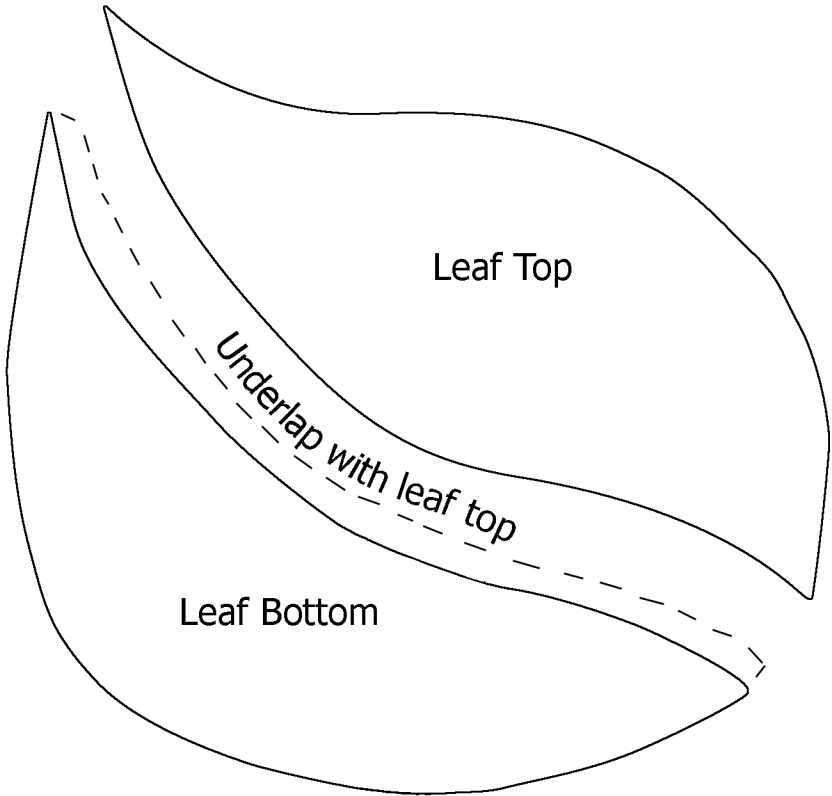
The bark cloth adds an awesome texture that makes this quilt very sophisticated but be aware; it also has a slightly looser weave. I like a turned edge on my appliqué so I used freezer paper as a template to turn the fabric around. I had no problems with fraying, but I think you would if you tried to use a needle turn technique.

The solid lines on the pattern are finished sizes, any dotted lines show where fabric was tucked under another. The horizontal center seam of the pear was machine sewn to get it nice and straight, but first appliqué the brown core onto the Parchment pear flesh piece and then sew the two sides of the pear together. Therefore you will make a great big pear (both halves) prior to appliquéing it to the background.

To position your pear on the background, press a center line along the 21 inch length of each background fabric and align it with the center seam of your pear. The two bottom edges of the pear should sit up $1\frac{3}{4}$ inches from the bottom raw edge of your background piece. Position the stem and leaf top and bottom to make a pleasing piece of fruit. Stitch pears, leaf and stem in place. Lastly, position and stitch on the seeds.

Sew all 4 blocks together. Quilt and bind.

1/4" seam allowances are added only where indicated



Images Reversed

1 inch
scale

1/4" seam allowances are
added only where indicated

Match with Top
here

Seeds

Core

sewing seam allowance

Images Reversed

1 inch
scale

