



CHERYL LYNCH QUILTS



CONFIDENT BEGINNER | 1 DAY CLASS

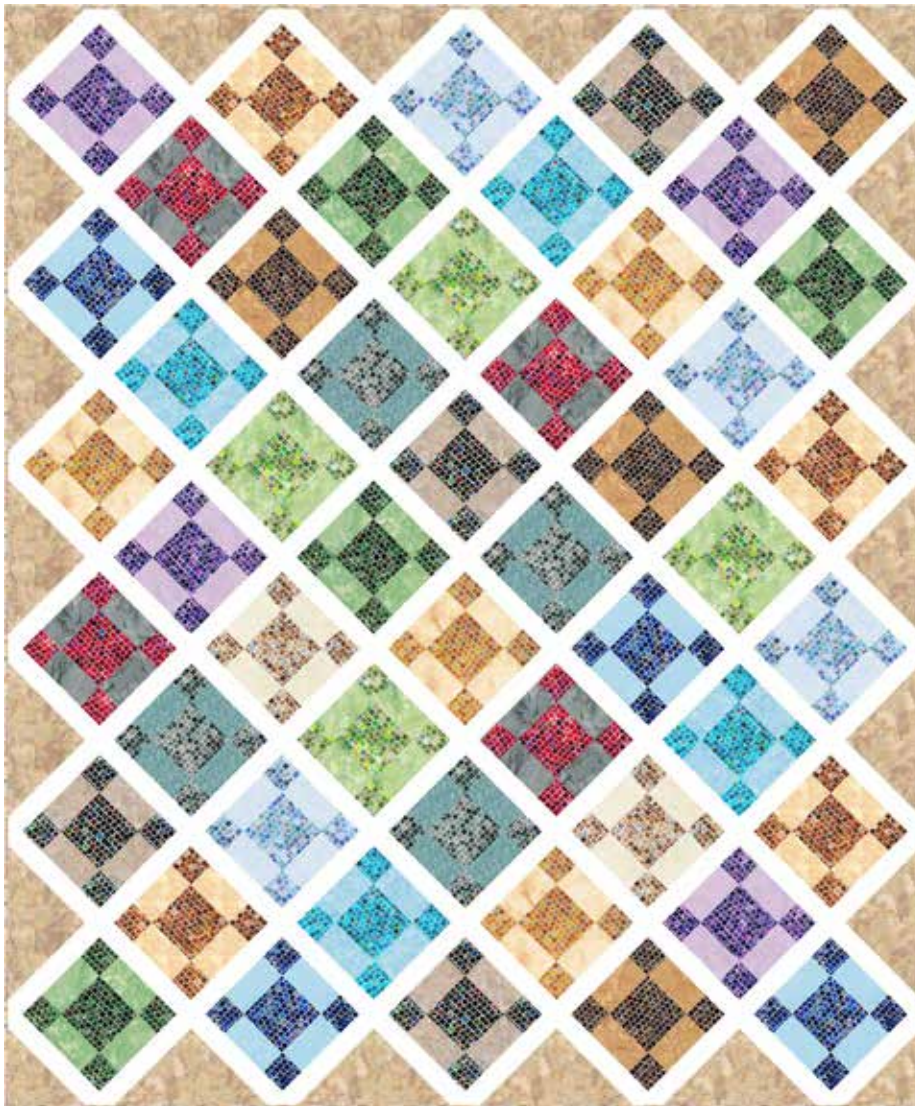
# MOSAIC MONTAGE

Finished Quilt: 60" x 80"

Quilt design by Needle in a Hayes Stack, featuring Mosaic Masterpiece, a Hoffman Spectrum Digital Print collection designed by Cheryl Lynch.

An intricate illusion in an easy-to-achieve pattern!

Requires 1/6 Yard of the Following:  
(9 Kits - 1 Bolt)



### 1895 16-Sky

1895 43-Camel

1895 512-Paradise

1895 84-Wheat

1895 550-Big Sur

1895 137-Pearl

1895 554-Treetop

1895 265-Oyster

1895 597-December

1895 401-Tortilla

1895 600-St. Paddy

1895 492-Breeze

1895 708-Baby Blue

Requires 1/4 Yard of the Following:  
(9 Kits - 1 Bolt)

S4808 16-Sky

S4808 19-Navy

S4808 33-Cream

S4808 39-Rust

S4808 41-Aqua

S4808 55-Charcoal

S4808 58-Earth

S4808 60-Hunter

S4808 71-Lime

S4808 91-Amethyst

S4808 537-Blacklight

S4808 568-Red Velvet

S4808 624-Gold Ochre

5/8 Yard for binding  
(9 Kits - 1 Bolt)

S4808 20-Natural

1 Yard  
(9 Kits - 1 Bolt)

1 5/8 Yards  
(9 Kits - 1 Bolt)

1895 353-Teddy

100 618-Zinc

PURCHASE PATTERN  
[NeedleInAHayesStack.biz](http://NeedleInAHayesStack.biz)