



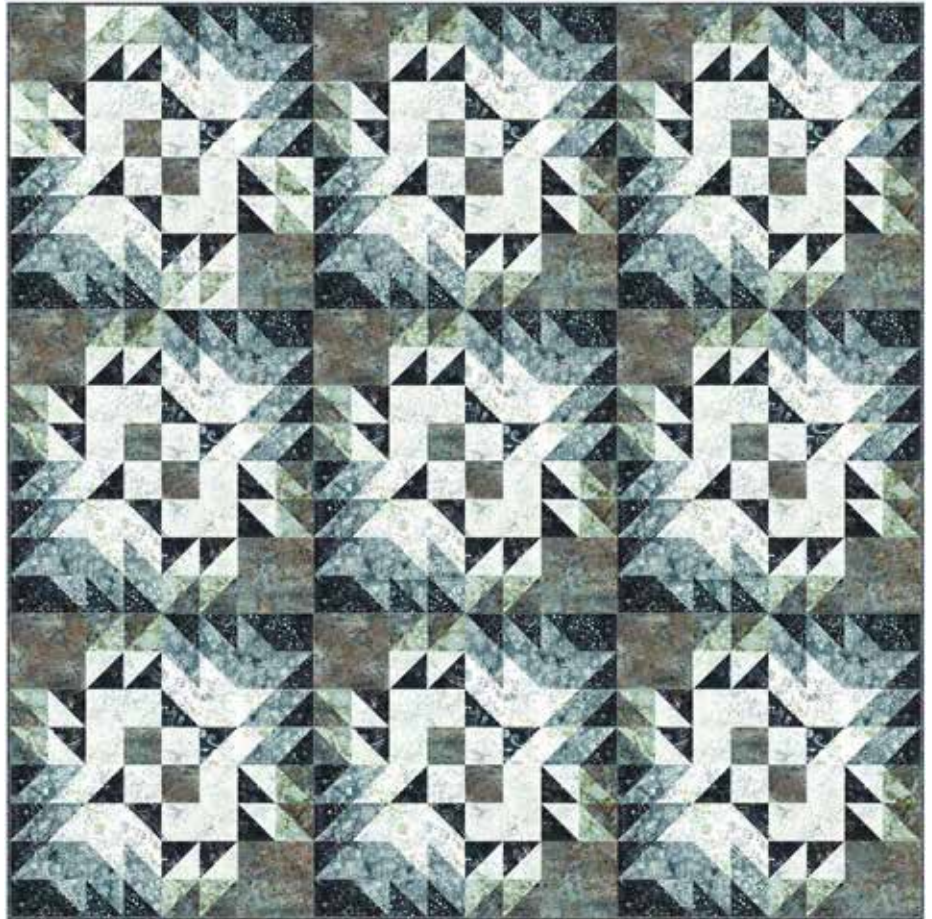
INTERMEDIATE | 1 DAY CLASS

RAIN WASHED

Finished Quilt: 72" x 72"

Quilt design by Cindi McCracken, featuring Hoffman Bali Batiks, the River's Edge collection.

Embrace the movement and depth of each block with this stunning quilt.



R2284 173-Smoke

U2451 576-Petit Four

U2454 243-Delft

U2455 77-Sage

U2457 113-Frost

U2457 243-Delft

U2457 611-River Rock

U2460 611-River Rock

U2464 92-Slate

PURCHASE PATTERN

CindiMcCracken.MyShopify.com

FABRICS	1 KIT	8 KITS
R2284 173-Smoke	5/8 Yard*	1 Bolt
U2451 576-Petit Four	1 Yard	1 Bolt
U2454 243-Delft	1 Yard	1 Bolt
U2455 77-Sage	5/8 Yard	1 Bolt
U2457 113-Frost	1 1/2 Yards	1 Bolt
U2457 243-Delft	1 Yard	1 Bolt
U2457 611-River Rock	1 Yard	1 Bolt
U2460 611-River Rock	1/2 Yard	1 Bolt
U2464 92-Slate	1 1/3 Yards	1 Bolt

* binding