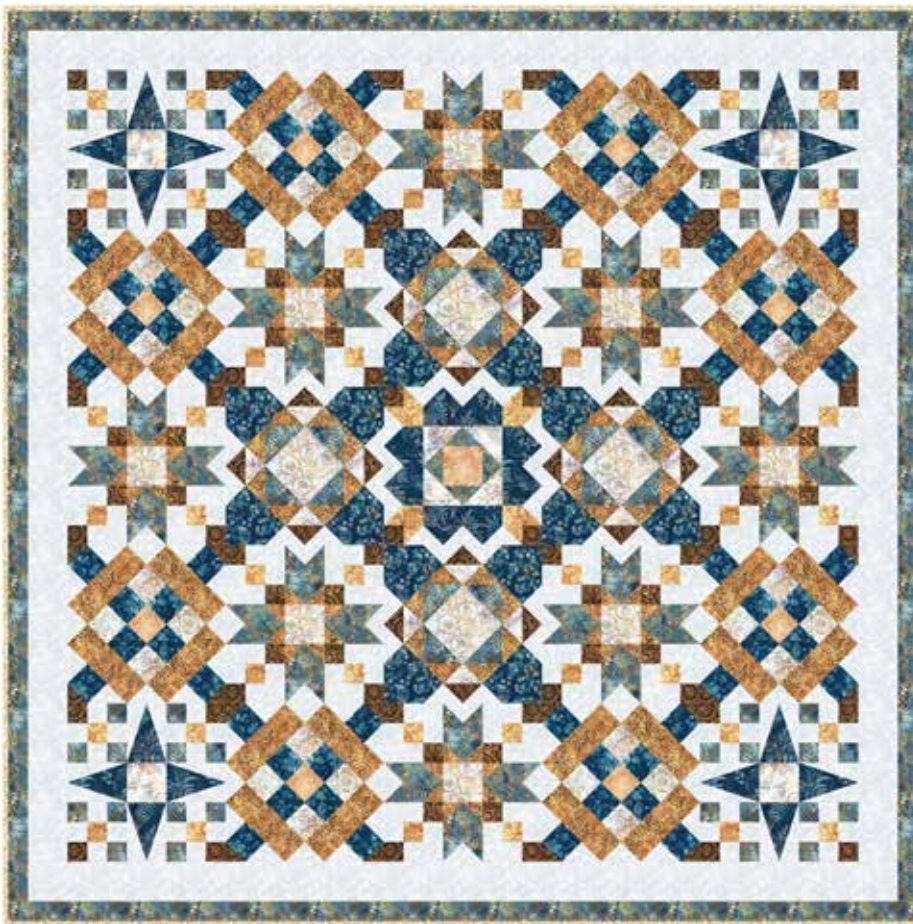


# SHEAVES AND PULLEYS

Finished Quilt: 93" x 93"

Quilt design by Tourmaline & Thyme Quilts, featuring Hoffman Bali Batiks, the Wheat Fields collection.

Five blocks bring in a bountiful wheat harvest with this beautiful queen-sized quilt.



884 361-Cabo

885 443-Seasalt

1895 134-Parchment

V2528 345-Fawn

V2529 19-Navy

V2529 501-Sand Dollar

V2531 19-Navy

V2533 7-Blue

V2537 43-Camel

V2538 501-Sand Dollar

V2538 58-Earth

V2541 84-Wheat

FABRICS	1 KIT	9 KITS	FABRICS	1 KIT	9 KITS
884 361-Cabo	2 Yards	2 Bolts	V2531 19-Navy	3/8 Yard	1 Bolt
885 443-Seasalt	4 Yards	3 Bolts	V2533 7-Blue	1 1/2 Yds.	1 Bolt
1895 134-Parchment	1/4 Yard	1 Bolt	V2537 43-Camel	3/8 Yard	1 Bolt
V2528 345-Fawn	1 1/3 Yds.	1 Bolt	V2538 58-Earth	3/4 Yard	1 Bolt
V2529 19-Navy	3/4 Yard	1 Bolt	V2538 501-Sand Dollar	2/3 Yard	1 Bolt
V2529 501-Sand Dollar	1/3 Yard	1 Bolt	V2541 84-Wheat	3/4 Yard*	1 Bolt

\* binding

PURCHASE PATTERN  
[TourmalineThymeQuilts.com](http://TourmalineThymeQuilts.com)