



Large and in charge. Big pieces make the fabric the star of the show. Quilt design by Stephanie Prescott of A Quilter's Dream, featuring Sweet Tea designed by KariAnne Wood of Thistlewood Farms.

BEGINNER | 1 DAY CLASS



Coral Colorway

Finished Quilt: 64" x 64"

Free pattern available at www.hoffmanfabrics.com

Sweet Tea Star

Quilt design by Stephanie Prescott of A Quilter's Dream, featuring Sweet Tea designed by KariAnne Wood of Thistlewood Farms.

64" x 64"

Yardage Chart

FABRIC	1 KIT
P4276 79-Seafoam	1/2 yard
P4277 59-Coral	1 FQ
P4278 79-Seafoam	1 FQ
P4279 79-Seafoam	1 FQ
P4280 59-Coral	1 FQ + 1/2 yard binding
N7541 59-Coral	1 FQ
1895 484-Seaside	1 FQ
N7541 134-Parchment	2 yards

Coral Colorway



P4276 79-Seafoam



P4280 59-Coral



P4277 59-Coral



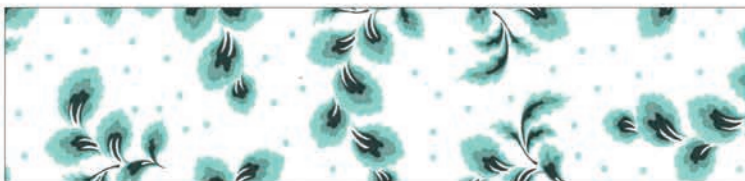
N7541 59-Coral



P4278 79-Seafoam



1895 484-Seaside



P4279 79-Seafoam



N7541 134-Parchment

Barn Star

64 x 64

Fabric Requirements:

1 fat quarter each of (6) fabrics
1/2 yard of favorite fabric
2 yards background

Label the fat quarters 1-6 and the half yard 7. When assigning these numbers, keep relative values consistent within the following pairs.

1 & 7 - 2 & 4 - 3 & 6 - 5 & 7

Cutting Instructions:

Cut all fat quarters into 16 7/8 inch squares.

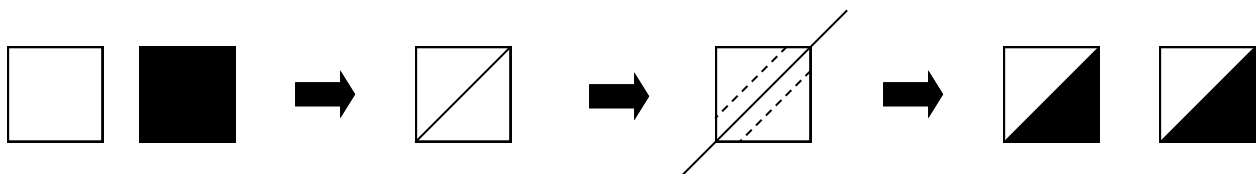
Cut the 1/2 yard into (2) 16 7/8 inch squares.

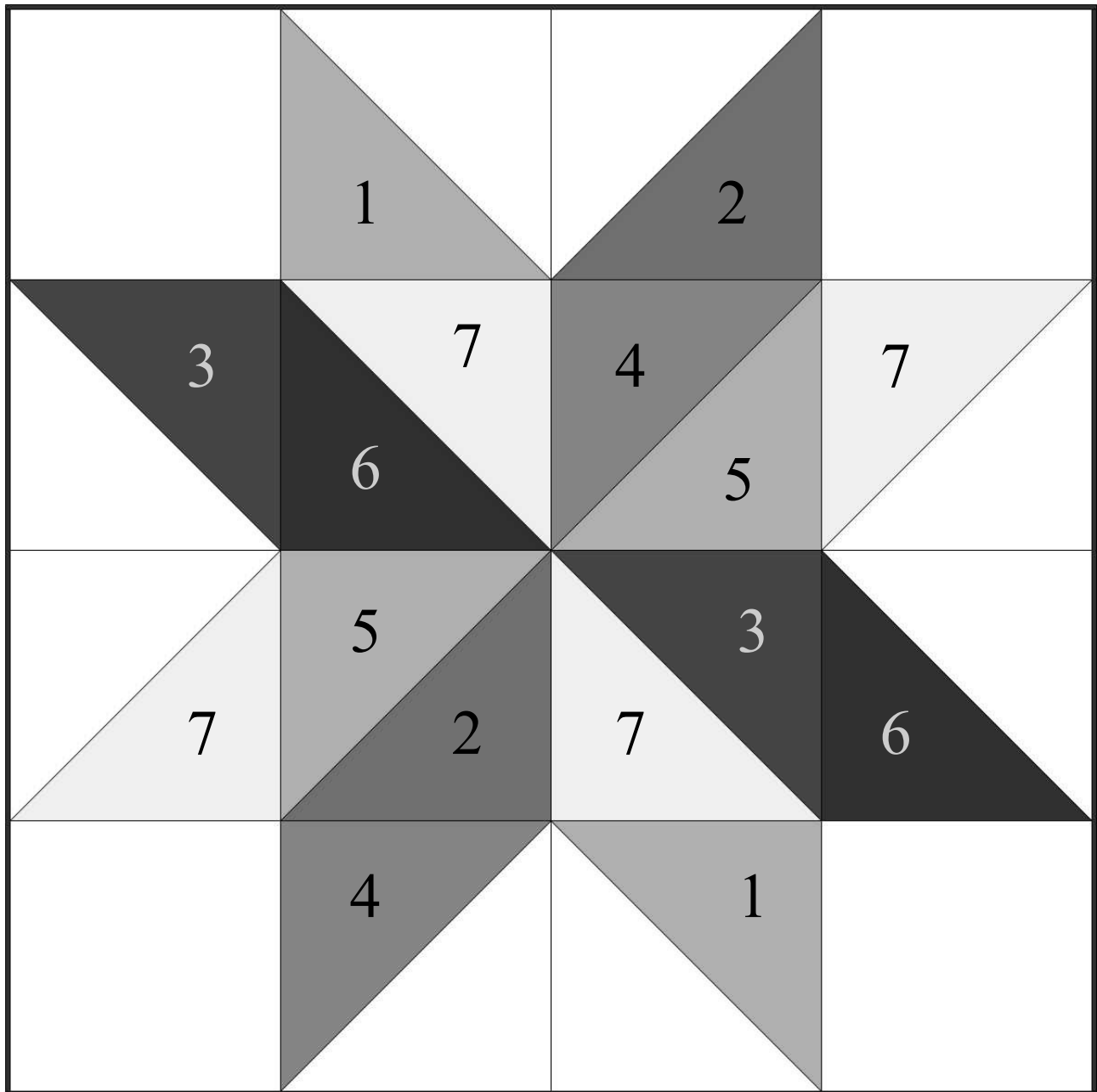
Cut the background fabric into:

- (2) 16 7/8 strips and sub cut into (4) 16 7/8 squares AND
- (2) 16 1/2 inch strips and sub cut into (4) 16 1/2 squares

Block Construction:

1. Take (1) 16 7/8 square from **fabric #1** and (1) 16 7/8 squares from **background** fabric. Place one square of each fabric right sides together and draw a diagonal line on the wrong side of one of the squares. Pin. Stitch a scant 1/4 inch away from both sides of the drawn line. Cut apart on the drawn line and you have 2 sewn half square triangle units! See diagram below.
2. Take (1) 16 7/8 square from **fabric #7** and (1) 16 7/8 squares from **background** fabric. Place one square of each fabric right sides together and draw a diagonal line on the wrong side of one of the squares. Pin. Stitch a scant 1/4 inch away from both sides of the drawn line. Cut apart on the drawn line and you have 2 sewn half square triangle units! See diagram below.





3. Keeping the fabrics labeled, cut all remaining $16 \frac{7}{8}$ inch squares in half diagonally (making triangles).

4. Take (1) triangle from **fabric #2** and (1) triangle from the **background** fabric. Place one triangle of each fabric right sides together. Pin. Stitch together using a $\frac{1}{4}$ inch seam along the diagonal edge. You have 1 sewn half square triangle unit!

5. Repeat step #4 with remaining triangles in the following combinations:

2 & 5 - 3 & 7 - 4 & 5 - 6 & 7 - 3 & background -
 4 & background - 6 & background

6. Take all sewn half square triangle units and the (4) 16 1/2 squares of the background fabric. Layout all units as indicated in the diagram on previous page. Sew together in rows.

Quilt and bind as desired. What a beautiful throw!

Binding—1/2 yard

Backing—4 yards

Designed by Stephanie Prescott
for
Hoffman of California Fabrics