



HOFFMAN FABRICS  
EST. 1924

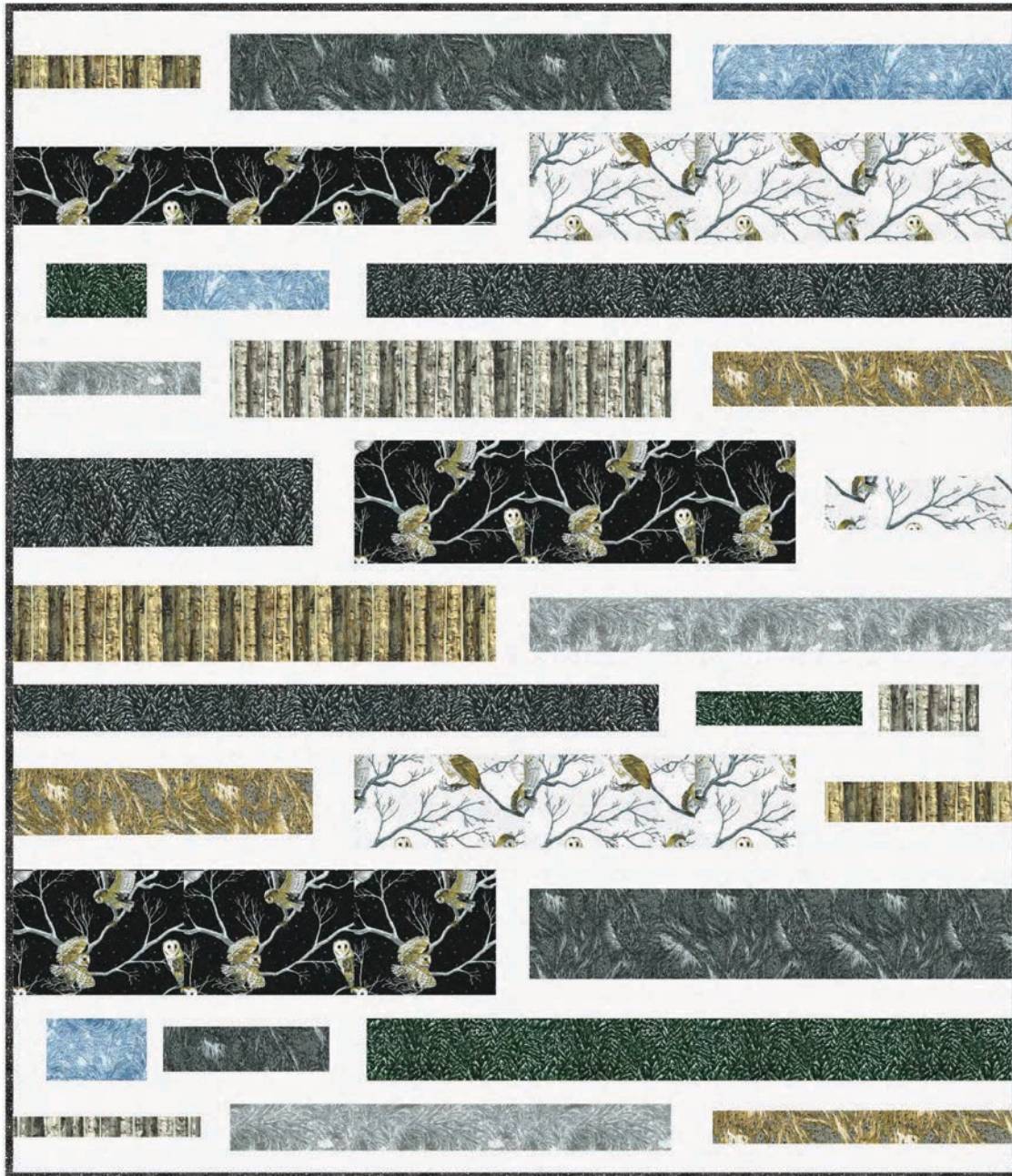


... if you love to quilt or love a quilter.

# WISE GUY

BEGINNER

Finished Quilt: 66" x 76"



Quilt design by Stephanie Prescott of A Quilter's Dream, featuring Nocturne. Sometimes a quick, easy, fantastic strip quilt is just what is needed to highlight focal and textured fabrics.

Free pattern available at [hoffmanfabrics.com](http://hoffmanfabrics.com)



[hoffmanfabrics.com](http://hoffmanfabrics.com)

## Yardage Chart

FABRIC	
P7591 4S-Black Silver	3/4 yard
P7591 483S-Fog Silver	5/8 yard
P7592 48S-Gray Silver	3/8 yard
P7592 190S-Ice Silver	3/8 yard
P7593 455S-Goldenrod Silver	1/4 yard
P7593 654S-Dark Gray Silver	1/2 yard
P7594 126S-Birch Silver	3/8 yard
P7594 642S-Sepia Silver	3/8 yard
P7595 92S-Slate Silver	1/2 yard
P7595 141S-Pine Silver	3/8 yard
L7360 4S-Black Silver	5/8 yard*
G8555 3S-White Silver	2 1/4 yards

\*binding



P7591 4S-Black Silver



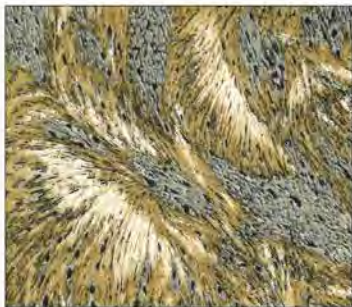
P7591 483S-Fog Silver



P7592 48S-Gray Silver



P7592 190S-Ice Silver



P7593 455S-Goldenrod Silver



P7593 654S-Dark Gray Silver



P7594 126S-Birch Silver



P7594 642S-Sepia Silver



P7595 92S-Slate Silver



P7595 141S-Pine Silver



L7360 4S-Black Silver



G8555 3S-White Silver

# Wise Guy

Quilt design by Stephanie Prescott

Finished size 66" x 76 ½"

¼" seam allowance

WOF=Width of Fabric

## **Cutting instructions**

### **Fabric A (P7591 Black Silver)**

Cut (2) 8 ½" strips WOF. Sub-cut one strip 8 ½" x 32 ½" and the other into 8 ½" x 27 ½".

Cut (1) 5 ½" strip WOF. Sub-cut (1) 5 ½" x 30 ½".

### **Fabric B (P7591 Fog Silver)**

Cut (1) 7 ½" WOF strip. Sub-cut into (1) 7 ½" x 32 ½".

Cut (1) 6 ½" WOF strip. Sub-cut into (1) 6 ½" x 27 ½".

Cut (1) 3 ½" WOF strip. Sub-cut (1) 3 ½" x 13 ½" rectangle.

### **Fabric C (P7592 Gray Silver)**

Cut (1) 4 ½" WOF strip. Sub-cut (1) 4 ½" x 30 ½".

Cut (1) 3 ½" WOF strip. Sub-cut (1) 3 ½" x 27 ½" strip and (1) 2 ½" x 13 ½" rectangle.

### **Fabric D (P7592 Ice Silver)**

Cut (1) 4 ½" WOF strip and sub-cut into (1) 4 ½" x 20 ½" rectangle and (1) 4 ½" x 6 ½".

Cut (1) 3 ½" WOF strip and sub-cut (1) 3 ½" x 11 ½" rectangle.

### **Fabric E (P7593 Goldenrod Silver)**

Cut (1) strip 4 ½" WOF and sub-cut into (2) 4 ½" x 20 ½" rectangles.

Cut (1) 3" strip WOF. Sub-cut (1) 3" x 20 ½" rectangle.

### **Fabric F (P7593 Dark Gray Silver)**

Cut (1) strip 5 ½" WOF. Sub-cut (1) 5 ½" x 30 ½".

Cut (1) 5 ½" WOF strip and sub-cut (1) 5 ½" x 27 ½" rectangle.

Cut (1) 4" strip WOF and sub-cut (1) 4" x 11 ½" rectangle.

### **Fabric G (P7594 Birch Silver)**

Cut (1) 5 ½" WOF strip and sub-cut (1) 5 ½" x 27 ½" and (1) 3 ½" x 6 ½" rectangle.

Cut (1) 2 ½" WOF strip and sub-cut (1) 2 ½" x 13 ½" rectangle.

**Fabric H** (P7594 Sepia Silver)

Cut (1) 5 ½" strip WOF and sub-cut (1) 5 ½" x 32 ½" rectangle.

Cut (1) 2 ½" strip WOF and sub-cut (2) 2 ½" x 13 ½" rectangles.

**Fabric I** (P7595 Slate Silver)

Cut (1) 6 ½" WOF strip and sub-cut (1) 6 ½" x 20 ½" rectangle.

Cut (1) 4" WOF strip and sub-cut (1) 4" x 41 ½" strip.

Cut (1) 3 ½" WOF strip and sub-cut (1) 3 ½" x 41 ½" strip.

**Fabric J** (P7595 Pine Silver)

Cut (1) strip 4 ½" WOF. Sub-cut (1) 4 ½" x 41 ½" strip.

Cut (1) strip 4" WOF. Sub-cut (1) 4" x 6 ½" rectangle and (1) 3" x 11 ½" rectangle.

**Fabric K** (L7360 Black Silver)

Cut (8) 2 ½" WOF strips for binding.

**Fabric L** (G8555 White Silver) I recommend that you label with the piece size after cutting.

For the vertical pieces within the row (blocks), cut (1) 8 ½" x WOF. Sub-cut (2) 8 ½" x 3 ½" rectangles and (1) 8 ½" x 2 ½".

From the same strip, cut (1) 7 ½" x 3 ½" rectangle, (1) 6 ½" x 3 ½", (1) 6 ½" x 2 ½", (3) 5 ½" x 3 ½" and (2) 5 ½" x 2 ½" rectangles.

Cut (1) 4 ½" strip WOF and sub-cut (1) 4 ½" x 3 ½", (1) 4 ½" x 3", (1) 4 ½" x 2" rectangles.

From the same strip, cut (1) 4" x 3 ½", (1) 4" x 3" and a 4" x 2". Also, (2) 3 ½" x 3 ½" squares, (1) 3 ½" x 3", (1) 3 ½" x 2 ½" and (1) 3 ½" x 2" rectangles.

For the horizontal pieces within the rows (blocks), cut (1) 3" WOF strip and sub-cut into (2) 3" x 13 ½" rectangles.

Cut (1) 2 ½" WOF strip and sub-cut (2) 2 ½" x 13 ½" rectangles.

Cut (3) 2" WOF strips and sub-cut into (4) 2" x 13 ½" rectangles and (2) 2" x 30 ½" strips.

Cut (4) 1 ½" WOF strips and sub-cut (4) 1 ½" x 20 ½" rectangles and (2) 1 ½" x 30 ½" strips.

Cut (4) 1" WOF strips and sub-cut (2) 1" x 13 ½" rectangles, (4) 1" x 20 ½" rectangles and (2) 1" x 30 ½" strips.

Cut (3) ¾" WOF strips and sub-cut (2) ¾" x 20 ½", (6) ¾" x 11 ½" rectangles.

For the horizontal strips between the rows (blocks), cut (20) 2" WOF strips. Piece all together at short ends.

## Construction

This quilt is pieced in horizontal rows (blocks). The piecing will start from the left and work to the right. Press the seams towards the darker fabric.

Starting with the top pieced row, **(Row 1)**, sew (2) 2" Fabric **L** rectangles to the long edges of a 2 ½" x 13 ½" Fabric **H**. Attach a 5 ½" x 2 ½" Fabric **L** rectangle to the right edge of previous. Add the 5 ½" x 27 ½" Fabric **F** strip to the right edge of the previous. Sew a 5 ½" x 3 ½" Fabric **L** rectangle to the right edge of the previous step. Sew (2) 1" Fabric **L** strips to the long edges of a 4 ½" x 20 ½" Fabric **D** rectangle. Row 1 is done!

**For Row 2**, start with sewing two 1 ½" x 30 ½" Fabric **L** strips to the long edges of the 5 ½" x 30 ½" Fabric **A** strip. Add a 7 ½" x 3 ½" Fabric **L** rectangle to the right edge of the previous step. Attach the 7 ½" x 32 ½" strip to the right side of the previous step. Row is finished!

**For Row 3**, begin with the 4" x 3" Fabric **L** rectangle and attach the 4" x 6 ½" Fabric **J**. Sew the 4" x 2" Fabric **L** rectangle to the right side of the previous. Sew a ¾" x 11 ½" Fabric **L** strip to the long edges of a 3 ½" x 11 ½" Fabric **D** rectangle. Attach this to the right side of the 4" x 2" rectangle. Attach a 4" x 3 ½" rectangle to the previous. Then attach a 4" x 41 ½" Fabric **I** strip. Row 3 is complete!

**Row 4.** Sew two 2" x 13 ½" Fabric **L** rectangles to the long edges of the 2 ½" x 13 ½" Fabric **C** rectangle. Attach a 5 ½" x 2 ½" Fabric **L** rectangle to the right side of the previous. Attach the 5 ½" x 27 ½" Fabric **G** strip to the right side of the previous step, then add a 5 ½" x 3 ½" Fabric **L** rectangle. Sew a 1" x 20 ½" Fabric **L** strip to both long edges of a 4 ½" x 20 ½" Fabric **E** rectangle and then attach this piece to the 5 ½" x 3 ½" rectangle, from the previous step. Hooray, done!

**Row 5.** Sew two 1 ½" x 20 ½" Fabric **L** rectangles to the long edges of a 6 ½" x 20 ½" Fabric **I**. Attach an 8 ½" x 3 ½" Fabric **L** rectangle to the right edge of the previous. Attach an 8 ½" x 27 ½" Fabric **A** rectangle to the previous. Attach an 8 ½" x 2 ½" Fabric **L**. Sew two 3" x 13 ½" Fabric **L** strips to the long edges of a 3 ½" x 13 ½" Fabric **B**. Finish this row by attaching to the previous step. Finished!

**Row 6.** Start with the 5 ½" x 32 ½" Fabric **H** strip and sew a 5 ½" x 3 ½" Fabric **L** rectangle to the right edge. Attach a 1" x 30 ½" Fabric **L** strip to each long edge of the 4 ½" x 30 ½" strip and then attach this to the 5 ½" x 3 ½" Fabric **L**. Another row completed!

**Row 7.** Start with the 3 ½" x 41 ½" Fabric **I** strip and attach a 3 ½" Fabric **L** square to the right edge. Sew a ¾" x 11 ½" Fabric **L** strip to each long edge of a 3" x 11 ½" Fabric **J** rectangle. Attach this to the 3 ½" square. Add a 3 ½" x 2" Fabric **L** rectangle. Continue by adding 3 ½" x 6 ½" Fabric **G** and then a 3 ½" x 3" Fabric **L**, to complete the row. Done!

**Row 8.** Sew a  $1\frac{1}{2}$ " x  $20\frac{1}{2}$ " Fabric **L** strip to each long edge of a  $4\frac{1}{2}$ " x  $20\frac{1}{2}$ " Fabric **E** rectangle. Attach a  $6\frac{1}{2}$ " x  $3\frac{1}{2}$ " Fabric **L** rectangle to the right edge of the previous. Attach the  $6\frac{1}{2}$ " x  $27\frac{1}{2}$ " Fabric **B** to the previous. Add a  $6\frac{1}{2}$ " x  $2\frac{1}{2}$ " Fabric **L** rectangle. Follow by sewing a  $2\frac{1}{2}$ " x  $13\frac{1}{2}$ " Fabric **L** strip to each long edge of a  $2\frac{1}{2}$ " x  $13\frac{1}{2}$ " Fabric **H** rectangle and attaching this to the last step. You're finished with this row.

**Row 9.** Sew an  $8\frac{1}{2}$ " x  $3\frac{1}{2}$ " Fabric **L** rectangle to the right edge of the  $8\frac{1}{2}$ " x  $32\frac{1}{2}$ " Fabric **A** rectangle. Attach a  $2$ " x  $30\frac{1}{2}$ " Fabric **L** strip to both long edges of a  $5\frac{1}{2}$ " x  $30\frac{1}{2}$ " Fabric **F** rectangle. Attach to the  $8\frac{1}{2}$ " x  $3\frac{1}{2}$ " Fabric **L** rectangle. Another row done!

**Row 10.** Attach the  $4\frac{1}{2}$ " x  $6\frac{1}{2}$ " Fabric **D** to the right edge of a  $4\frac{1}{2}$ " x  $3$ " Fabric **L** rectangle. Attach a  $4\frac{1}{2}$ " x  $2$ " Fabric **L** rectangle to the  $4\frac{1}{2}$ " x  $6\frac{1}{2}$ " Fabric **D** rectangle. Sew a  $\frac{3}{4}$ " x  $11\frac{1}{2}$ " Fabric **L** strip to each long edge of a  $4$ " x  $11\frac{1}{2}$ " Fabric **F**. Attach this to the right edge of the  $4\frac{1}{2}$ " x  $2$ " Fabric **L**. Then attach a  $4\frac{1}{2}$ " x  $3\frac{1}{2}$ " Fabric **L** rectangle to the previous. Finish the row by attaching the  $4\frac{1}{2}$ " x  $41\frac{1}{2}$ " Fabric **J** strip. Complete.

**Row 11.** Last one! Sew a  $1$ " x  $13\frac{1}{2}$ " Fabric **L** strip to each long edge of the  $2\frac{1}{2}$ " x  $13\frac{1}{2}$ " Fabric **G** rectangle. Attach a  $3\frac{1}{2}$ " x  $2\frac{1}{2}$ " Fabric **L** rectangle to the right edge of the previous. Add on the  $3\frac{1}{2}$ " x  $27\frac{1}{2}$ " Fabric **C** strip. Then attach a  $3\frac{1}{2}$ " Fabric **L** square to Fabric **C** used previously. Sew a  $\frac{3}{4}$ " x  $20\frac{1}{2}$ " strip to each long edge of a  $3$ " x  $20\frac{1}{2}$ " Fabric **E** and attach to the  $3\frac{1}{2}$ " square. Last row finished!

For the sashing strips, piece 2 of the  $2$ " x WOF strips together at the short ends. Trim this sewn strip to  $65\frac{1}{2}$ " (Your width of each row should be  $65\frac{1}{2}$ " ). Take the remaining strip length and sew full WOF strips together at the short ends until sewn strip measures  $65\frac{1}{2}$ " , trim and begin again until all strips are sewn and cut to length.

Double check and cut accordingly.

Sew a  $2$ " x  $65$ " strip to the top of Row 1, in between each row and on the bottom of Row 11.

Layer the pieced top, the batting and the backing and quilt as desired.

Finish with the binding.

